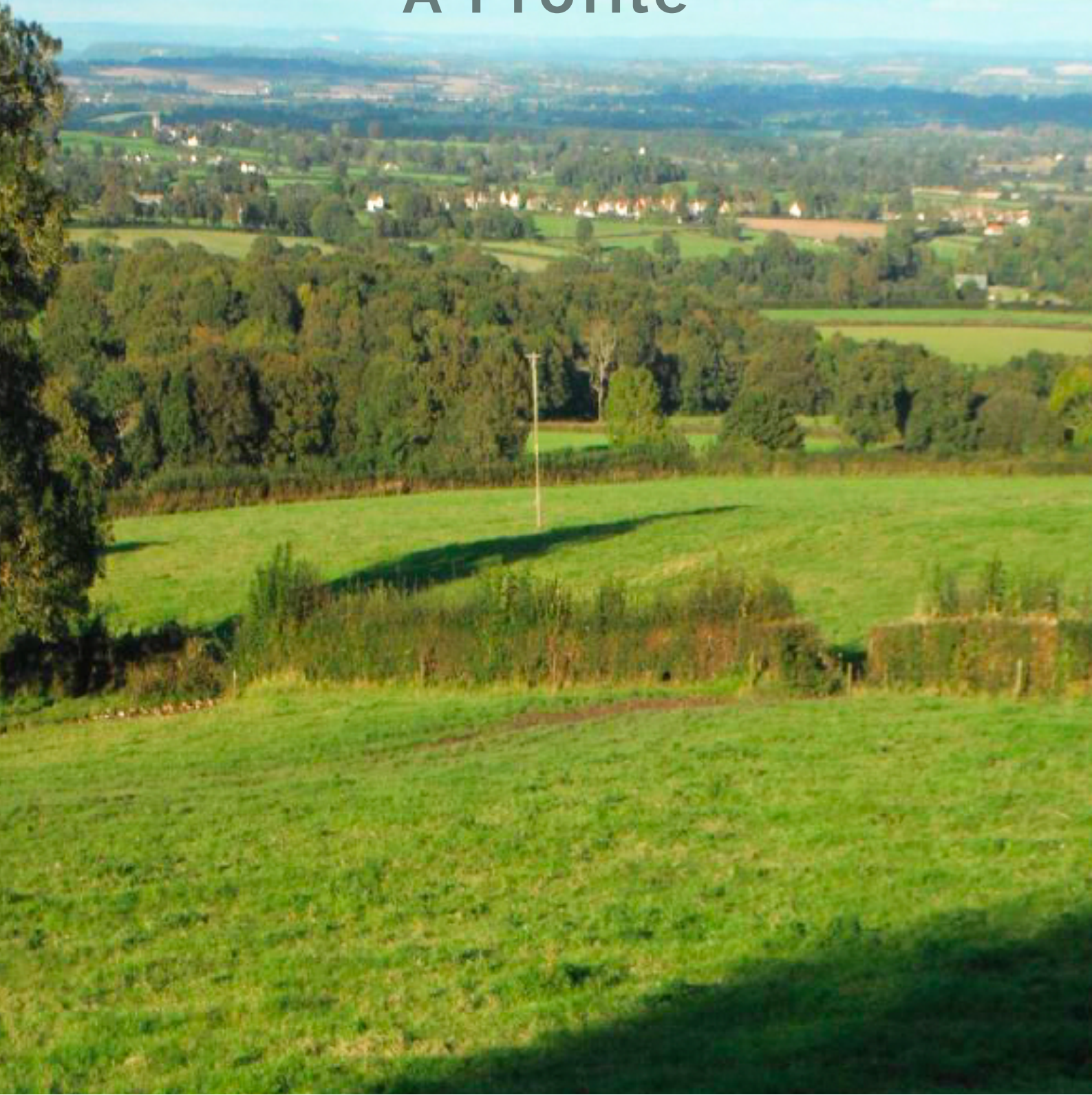


# **ISLE VALLEY BENEFICE**

**A Profile**





# Welcome

We offer you a very warm welcome.

We are delighted you are reading this Profile and encourage you to pray about whether this position might be the role to which God is calling you.

Are you the inspiring leader we need to rise to the special challenges of complex rural ministry and help us identify God's path for the way forward in our communities?

The diocesan vision is that  
'in response to God's immense love for us we seek to be  
God's people living and telling the story of Jesus.'

Supported by this, our local vision is to work more closely together as a benefice and to support our local communities.



# Index

Page

Isle Valley Benefice: location, links and facilities

4

What we value about Isle Valley Benefice

5

Our challenges and what we need help with

6

The rector we need

7

What we can offer

8

Worship

9

Finance

10

The wider church

12

The Rectory

15

Safeguarding

17

About the Parishes

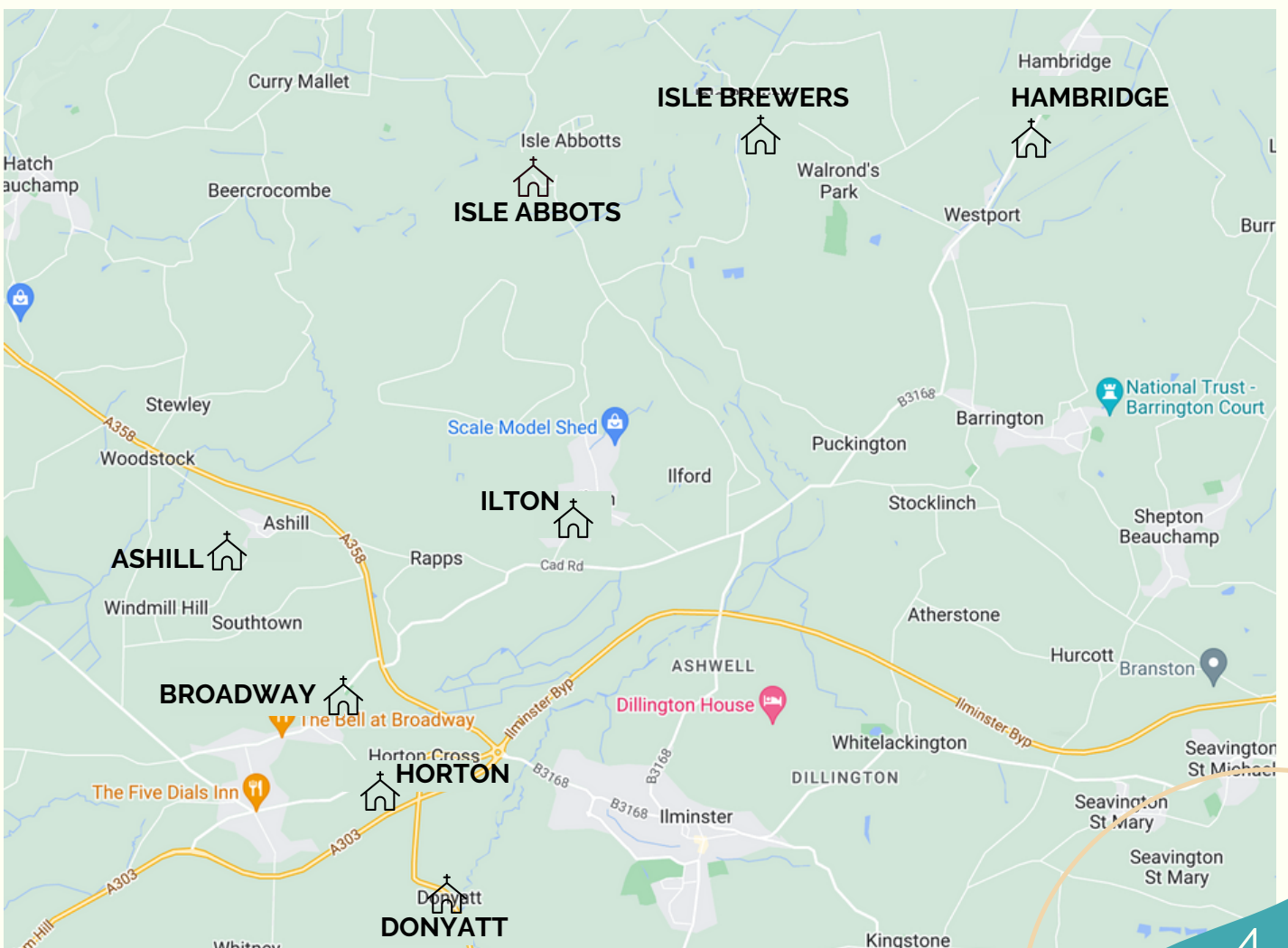
18

Ashill	19
Broadway	22
Donyatt	25
Hambridge	27
Horton	30
Ilton	31
Isle Abbots	37
Isle Brewers	40

## Isle Valley Benefice: location, links and facilities

The river Isle flows past Donyatt, Ilminster and Isle Abbots on its way to join the river Parrett near Middelney. The villages of Ashill, Donyatt, Broadway, Hambridge, Horton, Ilton, Isle Brewers and Isle Abbots are dotted around the River Isle and form the Isle Valley Benefice. The benefice stretches from the edge of the Somerset levels to the Blackdown Hills AONB and offers beautiful scenery and wildlife wherever you happen to be in what is known as Secret Somerset. There are easy links to the A303 and M3, M5, a Great Western train station at Taunton the county town (11 miles) and a South Western station at Crewkerne (17 miles).

There are excellent hospitals in Somerset: acute hospitals with A&E departments in Taunton and Yeovil ; and Community hospitals offering a wide range of services in Bridgwater, Burnham on Sea, Chard, Crewkerne, Dene Barton, Frome, Minehead, Shepton Mallet, South Petherton, Wellington, West Mendip, Williton and Wincanton. We hope you will love our benefice as much as we do.





## What we value about Isle Valley Benefice

We are a group of eight parishes and would like your help to strengthen our working together and enable us to flourish.

We enjoy life in our benefice. We appreciate the diversity of the parishes, the variety of parish life and the people in the parishes.

**Each one of our parishes is unique and this gives a richness to the benefice.**

Because our parishes are diverse in size and focus e.g. agriculture, music, social, prayerfulness, we often have different priorities.

The Leadership Team recognises and understands the pressures of our colleagues and we do our best to work and support each other.

It is a special feeling to know you have a team of people who will be there to offer help when it is needed. There is genuine friendship and fellowship; during this time of seeking a new rector the Leadership Team has invited parishioners to light a candle and pray each day that God's will be done.

**God our Father, help us to put our trust in you to send your chosen person to lead us on to where you would have us to be.**

**Amen**

We very much value our clergy, readers and lay worship leaders. They offer a variety of Sunday services for our congregations and are involved with prayer groups, nursing homes and home visiting and pastoral support.

The diocese and deanery have undergone a great deal of change in the last five years. Whilst we are accepting of change, together with clergy leaders we need to bring our church communities and wider communities with us. This takes time.

## Our challenges and what we need help with

There are four schools in the benefice and the benefice already has good links with St Mary and St Peter's Church School, Ilton, and Hambridge Community Primary School. Links have been established with Neroche Primary School in Broadway and Ashill VC Primary School. We would like guidance in understanding how to work alongside the schools in whatever way we can.

The parishes have different demographics and engaging with people of all ages in our communities is important to us. We look for leadership in learning how to integrate the church into the wider community in ways that follow the teachings of Jesus.

There are Benefice Services on the fifth Sunday and these are not very well attended. We welcome leadership to help us build on the good work of the benefice service that is already established but not growing.

We look to serve the new incumbent in practical ways, e.g. administration, support with baptisms, weddings and funerals. But we need direction from the new incumbent in how to encourage others to enable ministry, to establish leadership for finance and buildings and to help to take forward our vision and priorities.

Spiritual growth, sharing one's faith and worshipping in new and different ways can be difficult and daunting. We pray for a spiritual leader to lead and develop us in our journey together.

Understanding each other's challenges is an important part of parish life. Some people will share their concerns more easily than others and it is important to know that the Rector will take time to understand each person's needs and to support them.



## The rector we need

Someone who . . .

- is a minister of Word and Sacrament, with a deep love of the Bible and of liturgy
- has spiritual energy, is prayerful and is approachable and available
- is interested in rural life and who wants to be part of our communities
- is someone who wants to engage with local schools
- is someone who recognises the value of supportive lay leadership and will ask for help
- is prepared to work with us in helping us to understand important issues (e.g. the stewardship of resources and people)

# What we can offer

## The Ministry Team

Assistant curate

2 Readers

Part-time Benefice Administrator

Worship Leaders

Pastoral Assistants

One PTO willing to help with services

Retired clergy willing to help with occasional services

The parishes' Leadership Team meets with clergy four times a year to receive parish updates and to find out how things are going across the benefice. We discuss festival services, general services and possible new types of services.

The Isle Valley News has recently moved to colour and is now an engaging publication giving information on monthly services, prayer meetings as well as news and updates from all the parishes. It is a community publication so there is also a wealth of information about theatrical, artistic and fund-raising events as well as a good selection of advertisements from local tradesmen. The income from this publication helps pay for the Benefice Administrator whose help is greatly appreciated by everyone.

The benefice Leadership Team has met several times to discuss and pray for the process of filling the vacancy. Everyone is agreed that they want to support the new incumbent as much as possible. As a group we are welcoming, friendly and open to ideas – we may not always agree with one another, but the discussions are always fun and respectful.



# Worship

## Regular Sunday services across the Isle Valley Benefice

SUNDAY SERVICES	1	2	3	4	5
ASHILL	9.30 HOLY COMMUNION	11.15 FAMILY SERVICE	10.00 PARISH SERVICE		BENEFICE HOLY COMMUNION
BROADWAY	9.30 MORNING PRAISE	9.30 HOLY COMMUNION	9.30 PARISH SERVICE		
DONYATT	10.00 PARISH SERVICE		9.30 BCP HOLY COMMUNION	11.00 HOLY COMMUNION	
HAMBRIDGE		9.30 HOLY COMMUNION	9.30 FAMILY SERVICE		
HORTON	3.00 EVENSONG	10.00 PARISH SERVICE	10.30/11 PARTNERSHIP FAMILY SERVICE	9.30 HOLY COMMUNION	
ILTON	11.00 HOLY COMMUNION	3.00 EVENSONG	3.00 SONGS OF PRAISE		
ISLE ABBOTS	9.30 PARISH SERVICE	9.30 HOLY COMMUNION	9.30 MORNING PRAISE	9.30 HOLY COMMUNION	
ISLE BREWERS	9.30 HOLY COMMUNION			9.30 PARISH SERVICE	

## Prayers

Isle Valley Benefice Prayers every Monday at 9.15

Isle Valley Benefice Prayer Circle

Set out below is a summary of Parish Share requested and paid for in 2022:

<b>Parish Share</b>	<b>Request</b>	<b>Paid</b>	<b>Notes</b>
<b>Total</b>	<b>£53,916</b>	<b>£48,314</b>	<b>-£5,602</b>

### Parishes

The PCCs of the Isle Valley Benefice are typical of rural parishes with relatively small congregations but sizeable and old church buildings which make a constant demand on their funds. Nevertheless, most have found ways to meet their maintenance obligations as well as make improvements.

Annual payment of the Parish Share represents the most significant financial challenge for most PCCs.

Some parishes have struggled to find a volunteer to serve as PCC Treasurer. Others have very experienced treasurers, and they are always willing to share their knowledge with new treasurers.



## Finance (ii)

### **Benefice**

The Benefice has a separate bank account, and the Benefice Treasurer is responsible to the Clergy for:

1. Payroll for the salaried Administrator.
2. Raising funds, through subscriptions and advertising, for the monthly Isle Valley News (IVN).
3. Discounted central procurement, eg of wine, wafers, crosses and books for the parishes.
4. Paying expenses to Clergy and Readers.

Each year a Benefice budget is approved by the Leadership Team. PCCs refund the Benefice for centrally procured items, expenses and their IVN subscriptions. By careful management, the trend in the cost to PCCs of this annual recharge has been falling.

## The wider church

### Diocese of Bath and Wells

I am delighted that you are reading this profile of the Isle Valley Benefice as the parishes seek to appoint a new priest to help lead their mission, ministry and worship and work with their committed leadership team.

The parishes' new priest will arrive at a time of change and development. Here in Bath & Wells we are currently bringing to a conclusion a programme of deanery led pastoral reorganisation that has touched almost all parts of our diocese.

I have seen the opportunities and challenges in the benefice echoed right across our diocese since I arrived last year to be Bath and Wells' 80th bishop. This is leading to us thinking afresh about how we can best live out our diocesan vision to live and tell the story of Jesus. Building on what has gone before we have identified four priorities that will be central to all that we do.

They are:

- Valuing and cherishing the people and resources we already have
- Developing new Christian worshipping communities
- Sharing in ministry and leadership
- Deepening and growing faith



Our task as the people of God is going to be to work out what it means to turn these priorities into action in the very different contexts that exist across Somerset. When I read this profile, I was so glad that echoes of these priorities are to be found throughout it.

I hope that you'll be excited at the possibility of joining in with the vision, under God, that these churches have. If that's the case I do hope that you'll send us an application for this post so that we can all discern whether God is calling you to this beautiful part of south Somerset. It's going to be an exciting time for a new priest to join them, ready to work with the parishes' communities to identify all that God has in store and then to bring that vision into being.

Yours with every good wish,

**+Michael**

## The wider church cont'd

### Taunton Archdeaconry

Archdeacon - Simon Hill

### Deaneries

Exmoor, Quantock, Sedgemoor, Somerset South, Taunton, Tone

### Somerset South Deanery

The Deanery Leadership team consists of an Area Dean, Assistant Area Dean and Lay Dean, and we see our roles as being pastoral as well as organisational and we are happy to offer support to clergy in the deanery in any way needed.

We have a friendly and supportive Chapter which meets every month in various venues, and we hold three Deanery Synods each year which we try to make informative and relevant to our parishes. We have held synods on church buildings, shared local ministry and our next will look out how we celebrate and support our most rural parishes.

The Deanery Mission and Pastoral Group has been concerned with pastoral reorganisation and developing thinking around effective mission and ministry. In line with Diocesan thinking, it has been developing work around shared local ministry and looking at how a form of focal ministry can operate in benefices. We also have a Deanery Mission Priest and Deanery Youth Pioneer who works predominantly in Chard.

We will be very happy to welcome a new Incumbent to Isle Valley and look forward to working with you.

**Rev'd Ann Kember**  
**Area Dean**

## The Rectory

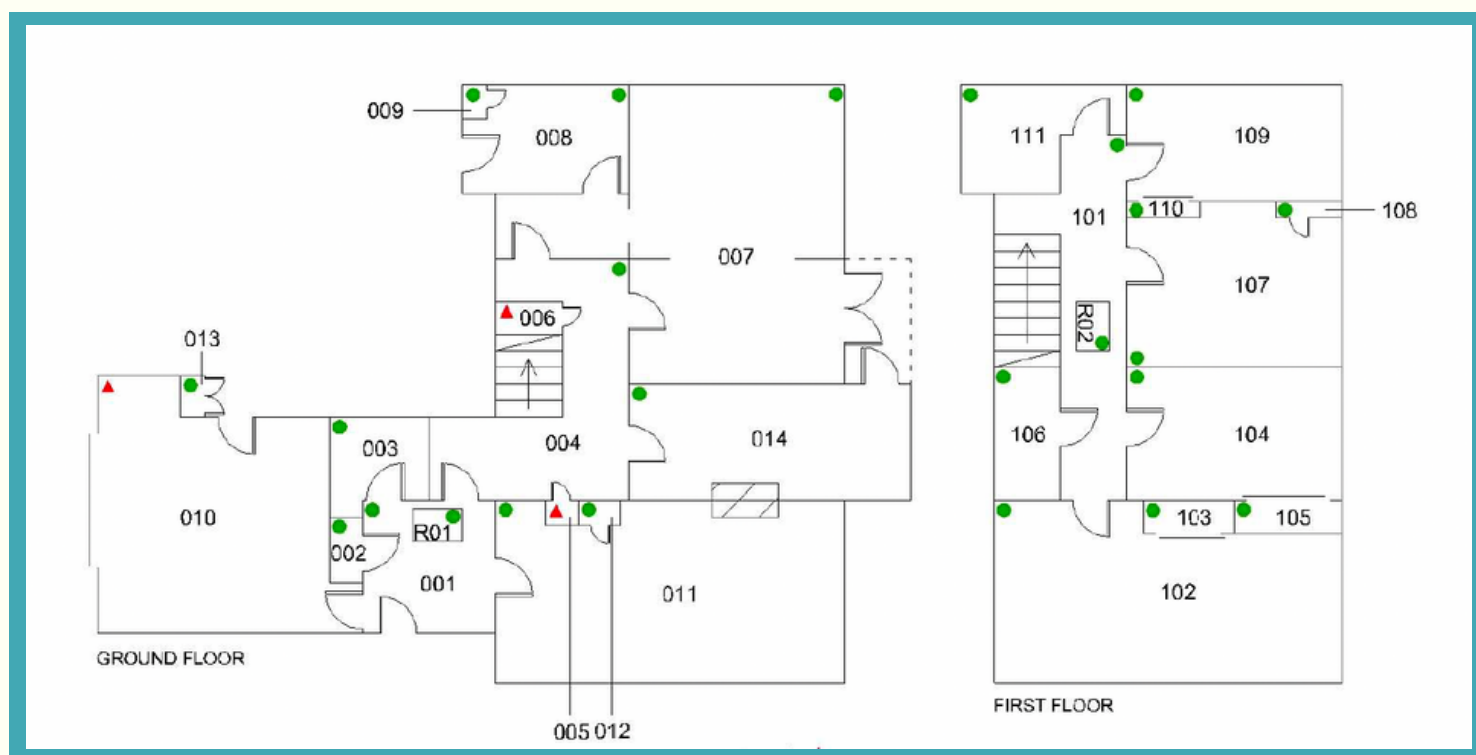
The Rectory is situated in the village of Broadway near Neroche Primary School and The Bell Inn.



## The Rectory cont'd

The accommodation offers a comfortable home and comprises:

- 4 bedrooms (one with ensuite)
- Family bathroom
- Ground floor WC
- Utility room
- Open plan kitchen and dining room
- Sitting room with fire place
- Study
- Oil fired central heating
- Single garage and off-road parking
- Garden surrounding the property





## Safeguarding

We have a designated Benefice Safeguarding Officer.

All parishes have adopted and are working with the Diocesan Safeguarding Policy.



# **ABOUT THE PARISHES**

## ASHILL The Church of the Blessed Virgin Mary, Ashill



In common with our friends in the Isle Valley Benefice we work hard to make our church part of the life of local people of all ages. We offer a warm welcome to everyone and are in the happy position of providing a diverse range of

worship as well as using our involvement in village activities as a thread to enable God's work. We look forward to greeting our new Rector as a help and guide on this journey.

The Church of the Blessed Virgin Mary, Ashill, lies at the centre of the parish with the main settlement around it and a ring of eight hamlets further out. We are the western most parish in the Benefice. This is a beautiful setting between the Somerset Levels and the Blackdown Hills; a rural parish with all the benefits and challenges this brings.

We hold both formal and informal services including those aimed at irregular attenders such as a Service of Thanksgiving for our Volunteers and Songs of Praise. Average attendance is 25. The church is open every day for private meditation and the Churchwarden is one of the hosts for the weekly Benefice-wide home prayer meetings.

Over the past five years we have worked hard to make this a church which is more of a community space, providing a good range of facilities to cater for all ages. We hosted our own Festival of the Moon (inspired by Wells Cathedral). The church was one of the village focal points for Ashill's Queen's Jubilee celebrations. Children from the village school decorated St Mary's with crowns and plenty of glitter (!) and the Nativity Play and Christingle services are held in the church.

Additionally, the pre-school children visit the church as a nearby safe space to play games such as hopscotch in the nave and 'Find the Mouse'. As part of our outreach work we gained a grant for a weekly warm space in the Village Hall which church members host – Coffee & Chat. This attracts around 30 people and gives us great strength to see how many non-churchgoers attend. Singing carols around the Village Hall Christmas tree and Christingle have become Christmas traditions. We are aware that living in a rural area can bring great isolation and we feel it part of our mission to strengthen the links in our village.



Coffee & Chat 2023



Harvest 2022



## Ashill cont'd



Our Easter  
Tapestry

Knitted by  
the ladies of  
Ashill Church

A team of more than 30 volunteers, not all of them churchgoers, keeps the church and church grounds in good order. The successful fundraising group have excellent support for their various activities that take place throughout the year. In 2022 we finished the year with more money than we started with and have already paid our parish share for 2023.

**Looking to the future we are looking to find a Rector who will guide both believers and non-believers on our spiritual journey. We seek support to strengthen links with the school and the wider population of Ashill.**

## BROADWAY The Church of St Aldhelm and St Eadburga

Broadway village has grown in recent years and has retained and continues to develop its sense of community.



Situated in the village are the benefice Rectory, Neroche Primary School, The Bell, a recently refurbished popular pub, a village hall, several small businesses and Church View Medical Centre - a modern medical centre with views to the church. Broadway village is adjacent to the village of Horton where there is a village shop and a limited bus service to Ilminster, our nearest town. Our community is varied and has traditionally been agriculturally focused. We are pleased that working families are settling here and, as a beautiful area of Somerset, Broadway is a naturally popular retirement destination.

There are many clubs and societies within the community including a walking group, Book Group, Broadway Amateur Theatre Group, Broadway and Horton Cricket Club, U3A Activities, Badminton and Short Mat Bowls Club not forgetting the Craft, Coffee and Chat, a twice monthly group that meets at Ashill Baptist Church.

Coffee at  
The Bell





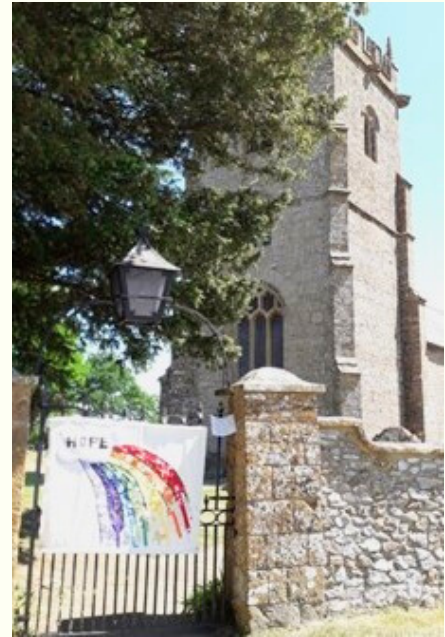
St Aldhelm & St Eadburga church in the parish of Broadway is a beautiful Grade 1 listed, 13th Century church on the edge of our village and is surrounded by lovely countryside. We offer a very warm welcome to all and are pleased that we have visitors who are interested in the history and beauty of the building as well as those who wish to join us for worship. Our churchyard surrounds the church and is a typical country churchyard. It is well cared for and we are grateful to the local Cricket Club who are very much involved with this task. As we are blessed with this beautiful setting, we are hoping to become involved in the Somerset re wilding project possibly re wilding a section of the churchyard. We have a local group of bellringers who enjoy ringing at Broadway.



Churchyard tidy up team



St Aldhelm's Day service with fizz and cake



Banner of Hope 2020

Our congregation numbers vary between 15 - 25. The popular services are mainly in December, at Easter and St Aldhelm's Day in May. Remembrance Service at the war memorial in the centre of the village is well attended with people and groups coming from other parishes in the benefice. There is a lively service for the lighting of the Christmas tree on the village orchard that is great fun and very well attended. We hold lay services twice a month and have Holy Communion once a month. After Communion we have started to go to The Bell for coffee and fellowship with all. We are able to offer a dedicated team of four lay people who take parish services on a regular basis and we have an organist. The PCC is small but active and currently there is no churchwarden. There is a separate fundraising group who organise regular activities such as an Angel Festival, Quizzes, Sponsored Walks and Pop up Sales on our village orchard. All are well supported by the wider community.

**We would like help with involving more families and younger people in our worship and are keen to develop ways of involving the community.**



## DONYATT St Mary's Church Donyatt

Village website [www.donyatt.com](http://www.donyatt.com)



Donyatt is the most southerly of the parishes and includes outlying hamlets as well as the main village, a population of 300. The fifteenth century Church, the largest in the Benefice, has been fully refurbished in the last 5 years which was funded and supported by the community and through legacies.

**Our vision going forward is to create a communal area within the church and to continue to explore making the Church more relevant for the community. We would like to hold some outdoor services to include animal services and various thanksgiving services.**

The Church has meant a lot to many over the years who, although they have moved out of the village to nearby towns or further afield, do still support St Mary's in many ways. Crowds come to our very popular Church summer fete held in a local family's large garden with a small lake where we hold boat rides and other fun activities enjoyed by all the family.



Village Fete 2022

## Donyatt cont'd

We hold a relatively high electoral number in comparison to the size of the village. The Church is sited on the banks of the River Isle where the community holds a biennial duck race in aid of the Church and village hall.

The village hall is across the road from the Church, newly refurbished and enables the Church and community to hold regular fund raising events and activities such as Ploughman's lunch on Easter Monday, Christmas bazaar, Harvest lunch and T Cosy, a non-profit making village outreach. The hall enables the Church and community to come together. We now have a Donyatt Community facebook page which enables all Church and village events to be advertised, shared and enjoyed by us all.

The George Inn provides social facilities for the parish which is near the Church and cycle path which runs along the old railway from Ilminster to Chard. Much of the land around the parish was owned by the county council who set up starter small holding businesses for young farming families although many have been sold off now we do still have some run in the same format.





## HAMBRIDGE St James the Less, Hambridge



The Church of St. James the Less was built in 1843 to serve the spiritual needs of those building the Westport Canal. At the start, and for many subsequent years, a high church tradition was maintained. Within recent years this has moderated to be more inclusive. Historically, the Church has celebrated agricultural festivals such as Rogation, Plough Sunday and Harvest. The Rev. Charles Marsen was a friend of Cecil Sharpe, who stayed in the parish and collected folk songs for a book compiled by himself and Rev. Marsen. Services are currently held twice a month – one traditional Holy Communion, and one more informal all-age worship. Coffee and fellowship follow the services. The most well attended services are around Christmas – Christingle and Carol Service. We are in the process of raising funds for a toilet and kitchen area to facilitate further the needs of visitors. When done, we would like to see the area used by small community/church groups. We manage to pay our parish share, and maintain the church.

We have a small, but faithful, congregation – seeking growth and change, led by the Holy Spirit, with our new priest alongside us. We want to move forward, under God, with new ideas, to see a vibrant, meaningful and growing Church community. We are looking for new ways to engage the Parish in faith, so that St James the Less better meets the spiritual needs of the community. We are currently proposing the formation of a new fellowship/house group.



Mothering Sunday 2023

The community has a number of organisations, such as: the Women's Institute, Village Hall, a Somerset Progressive School, Toddler Group, two areas of shop units and coffee shops, a pub and a school. We share events with other village groups – for example, the Carol Service is shared with the Women's Institute; and the Church Big Breakfast is assisted by others, while the Church folk help with the Village Hall Big Breakfast. A good fundraiser!



## Hambridge cont'd

The Church has historically had a good relationship with the village school. Although not a church school, the priest has always been welcome to visit the school and take some assemblies. Other clergy (Baptist and United Reformed) also visit, and there is a rota for clergy visits. The school has a good reputation and the Ofsted report in 2018 was classed as "Good". The roll is presently 121. The school has used the church for services.

We would be very interested to develop this relationship with the school, and have been considering "open book" during an assembly.

This would be for further discussion between our new priest and the Head of the school. There will be a new Head in September. We feel the good relationship between Church and School is something to build on.



Harvest Lunch 2022

**We are praying for our new priest, as we go through the process of selection.**



**HORTON** St Peter, Horton  
Village website: [www.hortonvillage.co.uk](http://www.hortonvillage.co.uk)



St Peter's Church in Horton, the youngest church in the benefice, was built in 1899. It is supported by a very committed Churchwarden, PCC, organists, a small choir, and a very welcoming team of sidesmen.

We have an excellent adjoining Church room, with a fully fitted kitchen, a disabled toilet, flower room, and vestry. The Church boasts many beautiful stained glass windows.

The Church Room is a valuable asset for our before and after service activities, especially for the Family service, and communion. It is regularly used for fund raising, and hosts Benefice meetings, Lent lunches, cream teas, quizzes, bazaars, and coffee mornings.

St. Peter's has an active Covenant with Ilminster and Broadway Hill

Methodist Church. The monthly Family service is planned, and led jointly. This service is extremely popular with all ages, is very vibrant, and is going from strength to strength. We feel truly blessed. Horton Nursing home, within the Parish, is visited on a regular basis by the Clergy, and home communion is offered.



Family service activities

Our Lent lunches are very popular both within the Village, and without. They provide an opportunity to meet up with old friends, and to make new ones. Our meat draw is also well supported, and both events contribute greatly to the cost of running the Church.

Our Christmas services are truly uplifting, Advent Carols, tree lighting where the Christmas tree is blessed, carols are sung, and hot drinks are served. These are followed by our Nativity where everyone has a part to play, our Christingle, crib service, and last but not least our midnight communion.



Nativity 2022

Horton village with a lively community, has a mixture of houses both private, and social, including an elderly persons' sheltered community. There is a Post Office with general stores, a pub, a new, and well used Village Hall, and a rejuvenated recreation ground .

**We would like our new incumbent to look at our wider community with fresh eyes, and provide us with some new ideas to encourage them to want to be involved in our Church Family**





Baptism 2022



Pancakes after the family service



Palm Sunday 2023

## ILTON St Peter, Ilton

Ilton village has a lot to offer and there is a noticeable, strong feeling of community and generally, a smile or a wave from those passing by. There is good access to major trunk roads and Ilminster, our nearest town where you will find: a supermarket, a bank, a Post Office, hairdressers, cafes and a selection of independent shops. Taunton, the county town is also within easy reach.



The 13th C. parish church of St. Peter lies in a peaceful secluded spot close to the village green. The congregation, although small, is loyal and faithful and there is a strong feeling of fellowship. We have a small PCC including a Secretary and Treasurer although at present the position of Churchwarden is vacant. Some re-ordering of the building has taken place, toilet facilities have been installed and new heating.

There are other plans, on hold at present due to finances. A new initiative is a bereavement support group called 'Keeping Company'.

As a church community we would consider ourselves 'middle of the road' in our churchmanship.

**We have simple but profound aspirations: to deepen our knowledge and understanding of the Bible, to spread the Grace and Love of Jesus, to contextualise our faith and Christ's teachings to our modern life and its challenges. To maintain and strengthen school links and lastly, but importantly, like most churches, to increase our worshipping congregation.**



Within the resident population there is a healthy mix of age groups and we have a reasonable number of young families. There are also two small traveller sites. Housing is mixed, with both traditional and new styles of property and some Almshouses. Thatched cottages rub shoulders with modern town houses.

Facilities within the village include a Village Hall, a Church School, a private nursery, a Pub, a Cricket Club, Riding Stables, a children's play area and a multi-use games area (the MUGA field). There are two small industrial estates and to the north, Merrifield Airfield which is linked to RNAS Yeovilton and used for pilot training.

A quote from the school **'The link between our clergy, church and school is vital to our community. We look forward to developing deeper links and acting for the local community in partnership with our local church.'**



Carol Service 2022





Village Green Remembrance 2022



Zumba Group



Summer Bar-B-Q 2022



School Display in Church 2022



There is a good degree of social interaction with regular groups meeting for a variety of interests including: 'Coffee Pot', Friendship Club, a small walking group, Zumba, Pilates, Line Dancing, St. John Ambulance training, Youth Club, Bell Ringers and a monthly market of local produce. Something for everybody who wishes to get involved.

The countryside surrounding the village gives opportunities for healthy activity with good footpaths and quiet country lanes. The River Isle offers pleasant riverside walks. The area is rural and predominately farmland. In fact, you are as likely to meet a tractor or a group of horses as you are to meet a car!!

Ilton is close to the Somerset Levels and the Blackdown Hills (AONB). Both the north and south coasts are accessible within an hour's drive. All in all, a very special place to live, a blessing for the community, for those who visit and for those who choose to join us.



Songs of Praise 2022

## ISLE ABBOTS St Mary the Virgin



The church of St. Mary the Virgin is situated in the heart of Isle Abbots, one of the smaller parishes in the Isle Valley Benefice. The bells were restored in 1999, and more recently the tower itself was also restored.

We have an active bell-ringing team, regularly ringing for services. The church is 13th century and grade one listed.

The church serves a community of about 80 households, with a population of about 250. As the village does not have a pub or shop the church is an important focal point. The Jubilee room, a small Victorian building very close to the church has been restored to provide a small hall with kitchen and toilet facilities.

Our regular Sunday services attract about 15 people. As we live in a rural farming community we have special services for Plough, Rogation, Lammas, and Harvest which are usually well attended.

Our Christmas carol service, Christmas and Easter services are also very popular.







Harvest Lunch



St Mary the Virgin



Rogation Service



Barbecue



## Isle Abbots cont'd

**Building on the existing community spirit in the village, we would like to find ways of encouraging people to be involved in worship that is relevant to them and we are open to new ideas and inspiration.**

We organise a number of fundraising and social events to help raise money for the fabric of the church and Jubilee room as well as the day-to-day maintenance and overheads of the church, including the Parish Share. These have included open tower days, concerts, flower festivals, quiz nights, breakfast mornings and a 100 club monthly draw. All our functions are well supported by the whole community as well as significant numbers from surrounding villages. We have a Village Choir and also a privately owned miniature railway which is often made available to help with fundraising and is very popular. We have a good relationship with the Village Hall committee, and we use the village hall for large events.

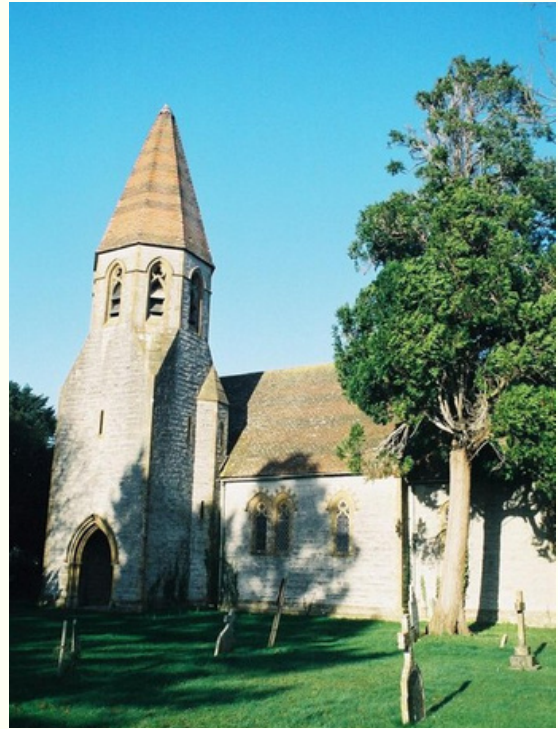


Railway Fundraising



## ISLE BREWERS All Saints

Isle Brewers is the smallest parish in the benefice. Until recently we had a church, the only thatched garage in England, but no village hall or shop. The Church of All Saints was built by Rev'd Joseph Wolff and consecrated in 1862. It replaced a Saxon church near the river which was described as 'being very badly pewed.'



The recent history is that in 2001 a Save the Spire Fund was set up as the spire was in need of timely and expensive restoration. Sadly this project was abandoned as being too difficult so we limped on with our services in a cold, damp and uninviting church. Fifteen years later the safety situation had deteriorated. A letter was sent to everyone in the village inviting them to a meeting to discuss our options. A small group bravely agreed to form a fund finding committee, and with incredible perseverance and a huge amount of charm they managed to raise the amount needed to almost rebuild it. In 2021 the work was finished and we held a re-dedication service with +Ruth.

We now have a building which houses both the parish church and the Joseph Wolff Hall.

## Isle Brewers cont'd

The village hall holds: regular coffee mornings (particularly good for those without family near by); suppers and quiz or bingo nights; meditation days; big sports matches are shown on the big screen with a glass of beer - we have a licence; stitch work sessions with coffee and chat; a Christmas Fair; Harvest supper/lunch with auction for a farming charity as well as a Village Fete on August Bank Holiday. With all our events we aim to keep them, whether it be the Village Fete or the Christmas Fair, relevant to a Somerset farming community. We celebrate big, usually, Royal occasions. There are plans to set up a History group and gardening talks. The ideas are appearing; we hope to do more as we move forward.



Harvest Festival 2022



Planting a hawthorn tree for the Queen's Green Canopy

The usual church festivals are celebrated and are well attended, however our Hymns and Pimms, a mid-summer Songs of Praise with a flower festival is a very popular extra.





Hymns & Pimms 2022



Village Fete 2022



A Craft Morning



## Isle Brewers cont'd

These events are a great way to meet those who don't go to church except perhaps on high days and show that those who do are not all gas and gaiters, they are just like everyone else.

**We show that the church building is a friendly place, not obviously special or grand, but a place where you can still your mind and listen to the sound of the love of the holy spirit, and is a wonderful place to find contact with your inner self.**



The first wedding in the restored All Saints Church



# Thank You

... for reading our Benefice Profile

