

ST LUKE'S CHURCH

— BATH —



St Luke's Church, Bath

Profile and Role Description, April 2024

INTRODUCTION

Thank you for your interest in the role of Vicar of St Luke's Bath.

This document has three sections:

- Context: an introduction to the Patron, the Diocese, the Deanery and the City of Bath
- Parish: our analysis of the Parish as it is now, the opportunities and challenges; our hopes for the future; and what we believe is needed in our new Vicar
- Further information: reports, data, links to give you as much information as possible as you discern whether this might be for you

In the introduction to Bath Deanery (below) it says:

“As part of the Diocesan strategy for 2022-2027 the Deanery is having to reduce from 22 stipendiary clergy to make cost savings; transitioning to higher levels of shared ministry, lay and ordained, paid and voluntary. The Deanery has committed to achieve this reduction in stipendiary clergy by developing partnerships between benefice incumbents and senior leadership teams and by pioneering new ways of being the church.”

As part of this Deanery Plan, there are early-stage discussions taking place about St Luke's joining together with a neighbouring parish, possibly St Thomas' Widcombe, which is in vacancy. The new Vicar of St Luke's will play an important role in being part of those discussions and in enabling a new partnership to be established and for the whole benefice to flourish. If and when the new benefice is established, the Vicar of St Luke's would become the Incumbent of the new benefice. This is an exciting new possibility, offering great missional possibilities.

PART A – CONTEXT

Our Patron



Simeon's Trustees is a leading and long-standing Church of England patronage trust, with patronage interests in 165 benefices across 33 dioceses. A number of benefices are team ministries and so we have an involvement in 191 appointments.

Founded in 1836 by Charles Simeon (who is commemorated in the Church of England Calendar on 13 November), Simeon's Trustees are guided by his charge to his founding trustees and their successors, for the benefit of the parishes in our care.

The trust is thought of as representing the evangelical tradition in the Church of England, but Simeon's Charge does not set out a 'party' position, and we have patronage interests in benefices in a range of traditions, which we respect.

Our main role is when a benefice is in vacancy, working with PCCs, Dioceses and, for a significant number of our benefices, other patrons, towards the appointment of a new minister.

However, in addition to involvement at other key times, we give ongoing prayer support for our parishes and clergy.

<https://www.simeons.org.uk/>

Our Diocese



Living the story. Telling the story.

Diocesan statement – our vision for growth and transformation

Introduction



We are delighted that you are considering whether this post of Vicar of the Parish of St Luke Bath in the Diocese of Bath and Wells might be right for you. In order to help your prayerful discernment, we want to share a bit about our diocesan vision, within which we hope your own ministry might flourish.

Appointing a priest incumbent is amongst the most significant decisions that any benefice makes. When appointments work out well, they contribute significantly to parishes flourishing and growing in a host of different ways – in spiritual depth, in impact within local communities and in the numbers of people becoming part of the local church. Such flourishing is not, of course, all down to the person appointed as priest. It depends first and foremost upon God. It also depends upon

everyone in a benefice being willing and able to contribute their unique gifts, skills, resources and abilities: working alongside their priest and sharing in the ministry of the benefice.

The flourishing and growth of churches always needs attention, but especially now as we come out of the shock created by the COVID pandemic. The impact of the pandemic created a sharp acceleration in the pattern of decline in church attendance that has been seen in our diocese over many years. Thankfully there are some signs that we are recovering from the COVID decline. For example, data showed that average adult weekly church attendance in our diocese rose between 2021 and 2022. Statistics only ever tell a partial story. It is even more encouraging to see churches around our diocese developing approaches that respond to the opportunities and challenges in their local context and enable growth to happen.

A vision for growth and transformation

Our diocesan context, described above, has convinced us that for our next season at least, our aim across all our parishes needs to be growing our churches, within and beyond our church buildings, in both numbers and depth of faith, so that we can better work for the transforming of our communities and the life of God's Kingdom amongst us.

Shared priorities

To help us pursue this aim, and following consultation across the diocese in 2023, we are inviting all parishes to focus on four particular areas of our ministry together. It is important for clergy considering working in our diocese to know what these priorities are, even though what they look like in practice will vary in each place.

To value and cherish the people and resources we already have	We aim to ensure each person is well supported and equipped as a follower of Jesus Christ and for any ministries they may feel called to undertake, within the local church and wider community. We are committed to supporting the well-being of all our leaders and church officers, both lay and ordained. We have a fully funded clergy well-being service, the offer of peer support groups, and an excellent team of Diocesan support staff fully focused on supporting our parishes, chaplaincies and schools.
To develop new Christian worshipping communities	Whether it be new forms of worship in a wide variety of settings and times, church revitalisations or church plants, we long to see the good news of Jesus connect with the people in our communities that our traditional offerings struggle to reach.
To share in ministry and leadership	We are committed to the New Testament vision of the church as a vibrant body of people all using their God-given gifts. We are committed to a model of shared local ministry: raising up and equipping lay and ordained leaders able to share together in leading the church and serving God's world.
To deepen and grow faith	This is foundational to all we do. We long to see people of all ages and backgrounds, but perhaps especially children, young people and young adults, having more opportunities to discover, explore and grow in faith.

The outcome we are looking for

When he talks about his own ministry in 1 Corinthians, Paul captures the dynamic we are seeking to achieve. "I planted," he says, "Apollos watered, but God gave the growth"(1 Cor 3: 6). We know that our churches will only flourish and grow as a result of God's action among us – it is God who gives the growth.

But Paul is also clear that we have a part to play too – in watering and planting, in doing the things that enable the conditions for God's growth to be supported. So, covered by prayer, our confident hope is that if we are intentional in seeking God's guidance in planning and supporting growth, then God will honour that to see his people flourish and thrive - in spiritual depth, in impact within local communities, in the numbers of people becoming part of the local church and in transforming communities locally and beyond.

Local shaping and diocesan support

There can't be any 'one size fits' all approach to turning the priorities outlined above into action. They always need to be adapted to local circumstances, opportunities and needs. The task of our diocesan support services is to get behind all that local benefices are doing and apart from their general support, there is specific support for exploring how to grow new Christian communities, how to discern and equip a growing range of ministries in your context and how to work well with children and young people. All these areas of support are grounded in exploring what it means to live out our faith.

What implications does this have for the appointment of clergy?

It is important for us all to appoint clergy to benefices who are ready, willing and able to pray for and share in the vision we have for the flourishing and growth of churches and Christian life in our diocese. We want to create an environment that could be described as high challenge, high support. This means appointing clergy who will not only value all that already

exists but will be eager to work with others to build on and develop it. It means appointing clergy who are committed to learning, being creative, and to starting with the gifts God has given to them, their benefice and the wider community. We are therefore looking to appoint candidates who will

- be committed to praying and intentionally seeking the growth and flourishing of the benefices in their care
- relish and expect to work in an environment that is high challenge, high support
- work joyfully and collaboratively with those who share with them locally in ministry and leadership, with their congregations and with others in their locality, to identify ways to grow and develop their churches with the grain of local priorities, resources, skills and passions
- enjoy working in partnership with deanery and diocesan colleagues.

We hope this might be you! We hope that you'd like to join us on the adventure and course we've set for our next ten years. We're praying that God will send us the right labourers for the harvest that God has set before us. Could this be you?

Handwritten signature of Michael in black ink.

The Rt Revd Michael Beasley
Bishop of Bath and Wells

<https://www.bathandwells.org.uk/>

Handwritten signature of Adrian in black ink.

The Venerable Dr Adrian Youings
Archdeacon of Bath

Our Deanery



Bath Deanery comprises the city of Bath and the surrounding villages. It is made up of 21 traditional parishes which comprise 39 church buildings. In addition, Grace Church is a Fresh Expression of church reaching out to families and those interested in sport. A pioneer minister is working in the South of the city to imagine what expressions of church might be appropriate in Southdown and Whiteway areas. Readers, retired clergy, self-supporting and stipendiary clergy contribute to the senior leadership of churches, working with Churchwardens and other lay ministers. Deanery Synod is a vehicle for mission and learning together and Chapter's focus is building prayerful partnerships and learning from one another. It has an active WhatsApp group for communication, prayer and building relationships. The emphasis for the Deanery is threefold:

Prayerfulness: valuing our different church traditions and the way these manifest themselves in the ways we pray. Seeking to understand, respect and value different ways of praying – from the liturgical to the charismatic. Encouraging ecumenical prayer and together discerning God's vision for mission around the Deanery.

Hospitality: understanding that we are one in Christ, our Christian hospitality means that nobody is in ministry alone, but we are all called to work together because (and not despite), of our differences. Partnership working over parish boundaries and between leadership and ministry teams is vital for enriching the life of the church, treasuring giftedness, and providing resilience through change. Ecumenical hospitality and working through the outcomes of LLF and PLF are priorities.

Innovation: the model of church most visible around the Deanery is the traditional one of church based around Sunday services, a building, and a Vicar. We are committed to innovating new ways of being the church. Apart from Grace Church and the Southdown / Whiteway Pioneer mission, the Deanery supports chaplaincy in Bath College, at both Universities, at the RUH Hospital and elsewhere. We work in partnership with other churches for youth ministry.

As part of the Diocesan strategy for 2022-2027 the Deanery is having to reduce from 22 stipendiary clergy to make cost savings; transitioning to higher levels of shared ministry, lay and ordained, paid and voluntary. The Deanery has committed to achieve this reduction in stipendiary clergy by developing partnerships between benefice incumbents and senior leadership teams and by pioneering new ways of being the church. This is a demanding and exciting time to be part of Bath Deanery as we seek to follow God in His mission, to prayerfully work in partnership with him and with others in the city.

Revd Stephen Girling – Area Dean

Mrs Pippa Page – Lay Dean

<https://bathdeanery.org/>

Our City



Bath is famous the world over as a UNESCO World Heritage Site, for its Roman and Georgian heritage, and Christmas Market. Despite its small size, it boasts two fine universities and other educational institutions, and a premiership rugby team. Tourists, students and rugby supporters can outnumber residents, but in return we benefit from a range of entertainment and dining establishments.

Bath is a fine place to live, and is relatively well off, but of course this is not the full picture. There are areas of deprivation and the social problems that you will find anywhere.

For more information see the links below.

Visit Bath: <https://visitbath.co.uk/>

Churches: <https://www.bath.ac.uk/corporate-information/local-churches/>

Council: <https://beta.bathnes.gov.uk/>

Schools: <https://beta.bathnes.gov.uk/schools-colleges-and-learning>

Social sector: <https://www.3sg.org.uk/>

PART B – THE PARISH OF ST LUKE, BATH

Following a process of consultation, we present below our current understanding of who we are, where we should be going, and the sort of person we need to help us. We very much hope this will help you to discern whether God is calling you to minister here at St Luke's.

St Luke's Church is:

Focussed on Jesus

We seek to see Jesus in one another and in those around us, to serve and to grow in discipleship. Our mission statement is *"Knowing Jesus and Making Him Known"*

St Luke's is a place which attracts and grows humble, faithful disciples of Jesus. There is a commitment to biblical teaching which encourages everyone to serve (inside and outside of the church) in some way. Everything that happens within the church is rooted in prayer and there is an expectation that the Holy Spirit will be leading and guiding.

A place of deep relationships and hospitality

Members of St Luke's enjoy meeting together and there are many opportunities provided to enable this to happen; e.g. home groups, coffee mornings, Prime time, coffee after church, etc... We also offer prayer ministry after our main services, home communion visits, as well as informal pastoral home visits.

We aim to be caring and supportive. Over the years deep, loving and supportive relationships have been built. Many people would characterise St Luke's as "a family".

We also enjoy coffee and biscuits (and sometimes cake!) after every morning service and encourage newcomers and visitors to join us. Most people stay for a chat and to share fellowship.



There is a spirit of enjoyment of being together

There is a feeling of love in this church

We have great biscuits – especially the Jammie Dodgers

Outward looking

We seek to look outwards to our communities (near and far) and to share the love of God in Jesus with them. We are wanting to provide for and welcome the non-churched.

We aim to be generous, sharing our financial and people resources with those outside the church family.



In 2023 we employed a part-time Children's and Families' Minister who has made good connections with local families and is developing our contacts with the local primary school. We hold groups for babies and their parents and carers (Little Stars), for under two's who are not reaching their developmental potential (Little Gems) and for toddlers (Chatterbox).

Members of the church have for many years used a weekly assembly to take "Open the Book" into our local primary school. We enjoy running a Holiday Club for local children during the summer holiday and have done so for many years. In the past we have had good contacts with a local secondary school, and we hope to develop those again in the future.

We understand the value of going out into our communities as well as making our church as accessible as possible. We produce an outward facing newsletter (The Herald) which we deliver to the houses in our parish three times a year.

Concerned for the environment and for social justice

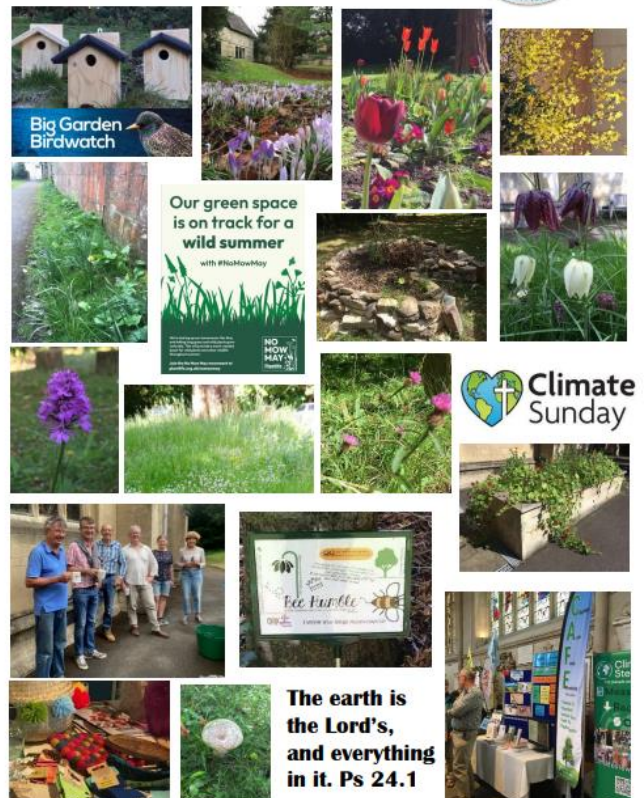
We were awarded an A Rocha Eco Church bronze award in 2022 and we are working towards silver. This work is led by an Eco Team. We are part of the local Christian environmental network, CAFE BANES.

We share a concern for social justice and to help bring God's kingdom here "on earth as in heaven". Members of the church support and are actively involved with Foodbank, Genesis Trust (helping the homeless and vulnerable people in Bath), CAP, Five Talents, Ripple Effect amongst others.

We have an annual Gift Day, and a history of generosity to causes outside the church.

We are a Fairtrade church.

St Luke's Eco Church journey 2023
Some pictures from the year



A community that enjoys worship

We enjoy different styles of worship and are blessed by a gifted organist and music/worship group who lead us and help us to learn new songs. We enjoy beautiful flower arrangements and banners which help our worship. Our main service normally follows a form of "Common Worship" with a style which is fairly traditional. We do though also like to arrange other services that acknowledge different ways of worshipping, praying and listening to God.

More recently we have been experimenting with different types and times of worship, introducing a monthly "Cafe-Church" style of service.

The stewards of wonderful facilities

Our main church building is a light and flexible space used mainly for worship, but also for concerts, holiday clubs, community fair, a coffee shop and also rehearsal space for a local choir. This area was re-ordered about 15 years ago. It also includes the church office space, a vestry and an additional office (currently used by our Children's and Families' minister.)

The Church Lower Room was refurbished around the same time and is currently mainly used as a youth lounge for our young people on Sundays. It has previously been used for a weekly youth club, and weekday after-school "drop-in" centre.



Our old church hall was modernised and extended about 30 years ago to form a complex of halls and rooms available for church use and outside hire. Our centre is used extensively by many outside organisations. There are various exercise classes and dance classes (Little Dancers and Beat Dance), U3A and other art groups, choirs, and a quilting group. It is also used by organisations such as NCT, Xyla Health, and Whole Occupational Therapy. Rainbows, Brownies and Guides

meet in the centre, as well as church groups of all ages. Local residents' associations often use it for meetings, as do some "House churches". The Church Centre generates an annual nett income of about £15,000 into church funds.

The grounds provide a lovely open space with opportunities for play and contemplation, and an area for wildlife.

Our Hopes and Priorities:

Hopes

- That we should develop our outward-looking presence, serving, and sharing God's love with our community(s)
- That we want to grow, especially by attracting younger families and becoming an all-age church.

Some examples expressed by church members:

To be a place where all feel welcomed and loved, able to deepen their relationships with Jesus

To see our church building and centre being used more and more, and for the benefit of God's kingdom

To be a vibrant church for all ages, especially bringing in young families; serving God and each other especially the local community

To see more and more people from the community joining our church family and meeting God their Father, Jesus their Saviour, and the Holy Spirit living in them

To be Jesus following; a church family who welcomes everyone as individuals as Jesus did

To be a praying, worshipping, caring community

Priorities

- Increasing our connections with children and families
- Making all our services and activities welcoming and accessible for newcomers
- Caring for the older people in our church and parish
- Working collaboratively with other local churches as opportunities arise
- Experimenting with fresh expressions of worship and community so that people can more easily "come and see"
- Developing the use of our wonderful facilities for the local and wider church and the wider community

Our challenges:

Ageing congregation

Most (but not all!) of the congregation are over 60. There is a risk of burn-out as people are asked to do more and more. There has been a reduction in regular giving as people have died or retire and move away. Historically our financial position has enabled us to be a generous church to mission agencies. We are currently OK, but unless we can increase income we will need to review costs, including the parish share.

Openness to change?

Many of us have been members of the Church of England for many years. We generally like the liturgy and quite traditional forms of worship but appreciate the need for change if we are to be more accessible to younger families and the un-churched. Such change may be difficult for some of us and will need to be introduced with sensitivity.

Encouraging people to stay

Over the years deep, loving and supportive relationships have been built in the church. Many people would characterise St Luke's as "a family". This is one of the strengths of St Luke's, but we are aware that for some newcomers this can also be a challenge. We need our new incumbent to help us find better ways of welcoming newcomers, enabling them to stay and quickly feel part of the family of St Luke's.

Location

St Luke's is located towards the eastern end of a rather oblong shaped parish. Although it has frontage onto Wellsway, a main highway into Bath, there are relatively few pedestrians passing by. The parish has no clear social centre or meeting place. Our local primary school (Moorlands) is located centrally, but the local shops, cafes and pub in nearby Bear Flat are just outside our parish.

We have though, in the past gone out into the community, e.g. arranging a community fair in a local playing field, a walk-through nativity, carol singing, and we want to build on that. However, developing ways to best serve our parish beyond the church buildings, has been a challenge for us over several years.

We have also invested in our buildings and other facilities over many years, which are regularly used by the wider community. We believe there is potential for their greater use and we long to see an increase in their use and for the benefit of God's kingdom.

Culture and diversity

As a congregation, we are generally characterised as a group of white, middle-class, and well-educated people. While this is representative of a significant sector of those living in our parish, it does not represent the whole of the parish. We have a sense of longing to be more diverse, and in a variety of areas, but we need help in finding ways to cross over social class barriers, so we can embrace and share the love of God in Christ with all.

How to discern what to lay down in order to do something new

There is a sense that we are a busy church, with most of the congregation, although retired, having very busy lives. There are lots of ideas of new things we could do, or re-start e.g. Men's breakfasts, the Coffee shop, breakfast club at local secondary school (Beechen Cliff),

more Community events, Youth Club .., but a feeling that without more resources, some things would need to stop in order to provide space and resources for new initiatives.

Uncertainty of partnerships with other churches

The uncertainty surrounding the nature of this vacancy position and whether/how we might need to partner with another church or benefice has been unsettling for some in the congregation. While we understand the need and are prepared to join with and share an incumbent with other friendly congregations who share similar values and attitudes, the practice of exploring and discerning a workable arrangement, beneficial to all parties, has been a challenging journey for us. (See introduction).

Priorities for our new minister:

- a strong strategic leader, able to build on the existing ministries at St Luke's and initiate and extend into new areas
- a team player who values the ministry of lay people and is willing to delegate whilst also leading by example
- an inspirational, biblically rich and spirit-filled preacher who is culturally relevant and able to communicate well with people of all ages, families, and the unchurched
- a good listener - prayerful, pastoral, empathetic - with a good sense of humour
- open to a variety of styles of churchmanship, worship, and services
- outward-looking, community-minded, and environmentally aware, imaginative of new ways to use our facilities
- able to lead us with sensitivity and wisdom on LLF/LGBTQ+ issues

This last point was prompted by a letter from the Bishop of Bath and Wells (December 2023) on the subject "Prayers of Love and Faith", which led the leadership team and a few others to consider our position on this subject.

We are an evangelical church which wants to welcome and serve all people regardless of gender identity or sexuality (or anything else). We long to proclaim the Gospel afresh for each generation, which in the power of the Holy Spirit, allows all people to grasp how wide and long and high and deep is the love of Jesus Christ. We believe God wants to bless all good and loving relationships.

Within our church there are members who sincerely hold opposing beliefs on whether it is right to offer a prayer of blessing to a couple in a same-sex relationship (i.e Prayers of Love and Faith (to be included in liturgies such as Sunday services)). We believe and trust that what we hold in common (our love for God, his word, and for one another) is greater than our differences.

We need an incumbent who appreciates the diversity of viewpoints on this issue, and who is able to guide us with wisdom, love and sensitivity to a position which demonstrably retains our unity in Christ and enables us to live well with difference.

What you can expect from us:

- welcome and support in prayer and practical ways
- a strong lay team who look forward to working collaboratively (see following section)
- a Jesus-focussed, outward looking and friendly congregation with a variety of gifts
- a desire to grow and a willingness to embrace change
- wonderful facilities – a beautiful and well-maintained church and church centre and a modern close-by vicarage (see following section)
- a well-equipped, and staffed, church office



PART C – Further information

Links

St Luke's website	https://www.stlukesbath.com/
St Luke's on the Charity Commission website	https://register-of-charities.charitycommission.gov.uk/charity-search/-/charity-details/5000983
Latest report and accounts - submitted	https://register-of-charities.charitycommission.gov.uk/charity-search/-/charity-details/5000983/accounts-and-annual-returns
- 2023 draft	https://cdn.filestackcontent.com/5FArVTuATQGanQoaq7hD
Latest APCM report	https://cdn.filestackcontent.com/0GEUZsTSC9CAfGV3NJbg
Latest Herald	https://www.stlukesbath.com/s/Easter-Herald-2024.pdf
Simeon's Trustees	https://www.simeons.org.uk/
Bath and Wells Diocese	https://www.bathandwells.org.uk/
Bath Deanery	https://bathdeanery.org/
Visit Bath	https://visitbath.co.uk/
Bath churches	https://www.bath.ac.uk/corporate-information/local-churches/
B&NES Council	https://beta.bathnes.gov.uk/
Local schools	https://beta.bathnes.gov.uk/schools-colleges-and-learning
Moorlands School	https://moorlands-school.org/
Bath Third Sector	https://www.3sg.org.uk/

The vicarage



The Vicarage is a pleasant 4 bedroomed house next door to the church, built in the 1970's within the grounds of the old vicarage. There are gardens at the front and rear, mainly lawn, and the boundaries are all stone walls. On the ground floor there are a lounge, dining room, study, spacious kitchen and utility room. There is a garage, with a loft room above, and parking space suitable for several cars. The vicarage has been re-decorated during the vacancy.

To the best of our knowledge, we understand and indeed expect that the intention is to retain the Vicarage. It is currently let to tenants by the Diocese.



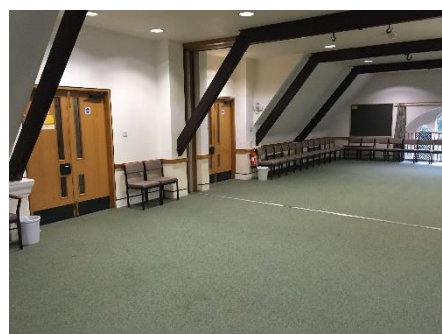
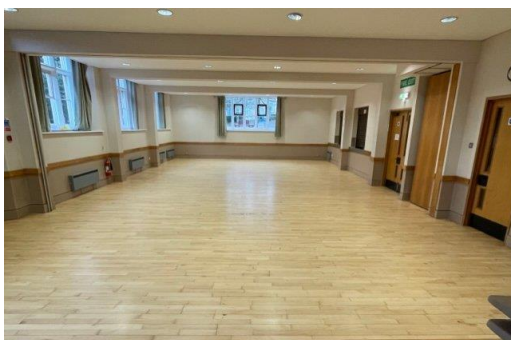
The church and centre buildings

We have significantly invested in our buildings to improve their usefulness to the congregation and the community.

The church:



The centre:



Our team

The team is of course everybody, and everybody contributes in their own way. We believe that we have lots of talent and experience in the congregation, which needs to have opportunities for expression and growth.

Warden (Jan Rich), Assistant Warden (Stephen Tomlin), Treasurer (Ruth Sara)



Lay Readers (Yvonne Fry, Gary Best, Lindsay Glazebrook)



PCC Secretary (Tim Harris), Childrens Minister (Serena Stanton), Organist (David Kniveton)



Lindsay Glazebrook is currently training for the ordained ministry. We expect that she will serve as a curate at St Luke's from July 2025, and subsequently to assist as a local ordained minister at St Luke's.

Monthly calendar (sample – March 2024)

w/c 3rd March	Home Groups meet
6th March	11am LITTLE STARS & ME. Upper Hall in centre.
7th March	9.30am CHATTERBOX toddler group in Lower Hall.
10th March	MOTHERS' DAY 10am HOLY COMMUNION. Rev Liza Wortlehock, Speaker Gary Best 4pm CAFE CHURCH
11th March	11am LITTLE GEMS & ME R2 In centre
13th March	11am LITTLE STARS & ME Upper Hall in centre
14th March	12noon PRIME TIME in Lower Hall in centre.
14th March	2.30-4pm TEA TIME CONCERT in church.
w/c 17 th March	Home Groups meet
17th March	10am HOLY COMMUNION with Rev Rich Miles. Sam Packer leads "What has Jesus done for you?" Rockets and youth meet
18th March	11am LITTLE GEMS & ME R2 in centre.
20th March	11am LITTLE STARS & ME Upper Hall in centre.
21st March	9.30am CHATTERBOX in Upper Hall.
22nd March	10am COFFEE MORNING in church 7pm CLASSIC FILM CLUB in church.
24th March	10am PALM SUNDAY HOLY COMMUNION with Rev Matt Vaine. Rockets and youth meet
25th March	11am LITTLE GEMS & ME R2 in centre.
27th March	7.30pm ZOOM PRAYER MEETING
29th March	2pm GOOD FRIDAY HOUR AT THE CROSS 7.30pm LIGHT IN THE DARKNESS Jane Lilley Singers
31st March	10am EASTER SUNDAY HOLY COMMUNION with Rev Stephen Girling

Christians working together in Bath

Bath has some effective examples of Christians working beyond their church boundaries, and we are keen to encourage these. St Luke's has been involved with all of the following initiatives.

BathCAN

The Bath Christian Action Network does not seem to be active at the moment, and there is a problem with the website. However, it was established to help to bring churches and Christians in the Bath area together in prayer, discernment and action around a common purpose to build justice, mercy and hope for individuals and local communities.

<https://www.bathcan.org.uk/>

Lux Youth Project

Formerly the local branch of Youth for Christ, Lux works with young people from across Bath, Peasedown-St-John and Timsbury.

“We have more than 30 years of experience and specialise in community youth work, mentoring and chaplaincy. We believe in every young person we interact with no matter what their background, or how they identify. We want to help facilitate hope in young people's lives by meeting them where they are in life and help them reach their God given potential. We deliver open access youth work, breakfast clubs, 1:1 mentoring, small group work, Motus – a street dance academy, and a food pantry.”

<https://www.luxyouthproject.co.uk/>

Genesis Trust

Genesis Trust is a network of people, often but not exclusively Christians, who are following Jesus' call to love our neighbour.

“We support homeless and vulnerable people in the Bath area. We provide compassionate help to support people with their immediate needs and journey with them as they gain confidence, learn new skills, overcome challenges and make choices to restore and rebuild their lives. We run a series of interlinked projects which wouldn't be possible without the commitment and support of amazing volunteers. In many ways our role is to offer opportunities for people to help other people.”

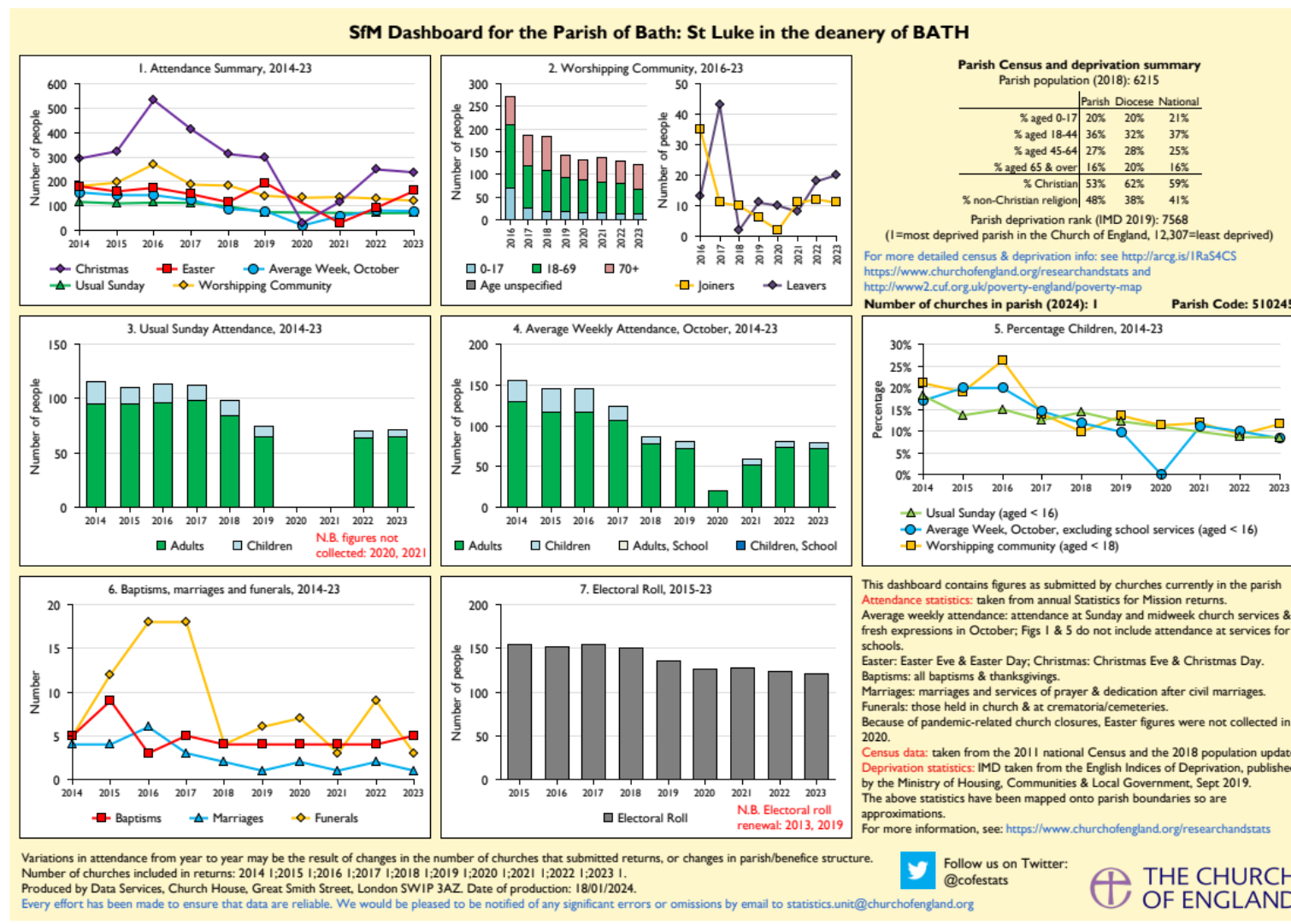
<https://genesistrust.org.uk/>

CAFÉ BANES

CAFE (Christian Action For the Environment) BANES is an informal network of Christians in the Bath and North East Somerset area who are involved in, or want to encourage, action to improve the environment and protect nature.

<https://cafebanes.org/>

Statistics (SfM Dashboard)



Statistics (Finance Dashboard)

