

WRAXALL WITH FAILAND & TRENDLEWOOD CHURCHES

welcome you...



...to our church
families.



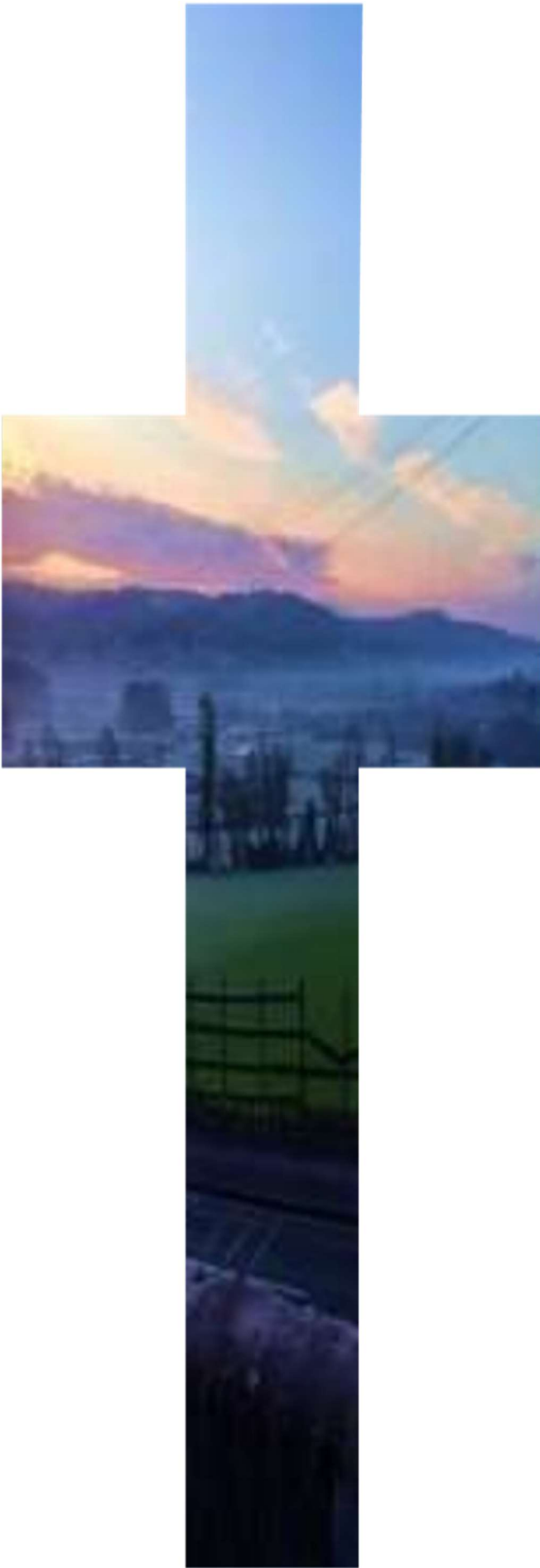


TABLE OF CONTENTS

1. Introduction.....	iii
2. Location, Location, Location!.....	iv
3. Who are we looking for?.....	v
4. Wraxall with Failand Parish Profile..	1 - 23
5. Trendlewood Parish Profile.....	24 - 31
6. Appendix.....	32 - 33

Loving God

We pray You will bless, guide and pour out Your Holy Spirit on those seeking the right place to offer their Ministry, and on those seeking the right person to lead our churches.

*Together, may we discover Your will & Your way for the future, & see Your Kingdom grow. **Amen***

I. INTRODUCTION

Coming from **different origins**, Wraxall with Failand and Trendlewood Churches invite you to explore their profiles: Wraxall and Failand's worshipping communities are based in beautiful historic Church buildings, whilst Trendlewood Church started life as a church plant in a local pub in 1989, outgrew that and currently meets in a local non-faith school.

We have **different worship styles**, from traditional to informal; members of all congregations offer commitment and dedication in serving their neighbourhoods in this beautiful part of North Somerset.

This is just a flavour of how our churches differ in how they do church. With much to share, encourage and **learn from each other**, celebrating our different traditions, cultures and skill bases. We feel this new arrangement will give our offering to the **community** a much broader and wider base as we seek to **grow** our Churches and move forward together.

When initially presented with the concept of working in **collaboration**, we'd have to admit it was an unexpected prospect for all three churches to digest. However, we are ready and determined to embrace this new venture. We can see God's hand in it, are **curious** and nervously excited about where our journey is going to take us.

Are **you** someone seeking an **extraordinary opportunity** that this new combination of churches offers; an enthusiastic individual who has the necessary skills to explore, encourage and draw on the **talent** in our congregations and opportunities that will arise as we learn to work alongside each other and move forward together in **mission**.

If you believe you may be that person, read on...

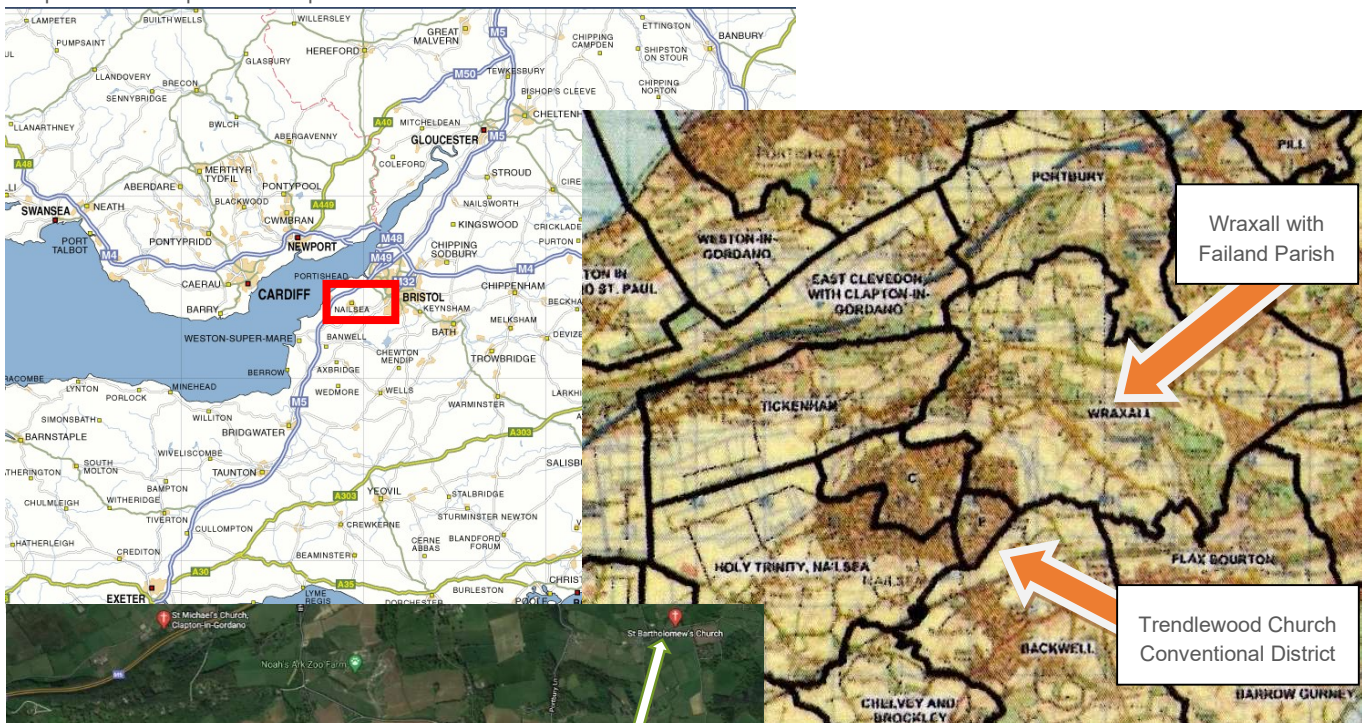
2. LOCATION, LOCATION, LOCATION!

You can see from the maps below, that our three churches are situated south-west of Bristol, in Portishead Deanery, North Somerset, and are part of the Diocese of Bath & Wells.

All Saints Wraxall is in the south of their parish, and St Bartholomew's Failand is to the north.

Trendlewood Church's main venue for services is close by at Golden Valley School in Nailsea town.

Map taken from OpenStreetMap's



Some of the Parish Boundaries within the Portishead Deanery

These are the 3 churches covered by this role. (picture from Google Maps)

3. WHO ARE WE LOOKING FOR?

A person who is a deeply committed Christian, and who will relish the challenge of working with and relating to a newly created combination of church families, and wider communities, exploring opportunities for growth as God presents them.

A pastoral teacher and spiritual leader, ready to embrace, enjoy and respect the diversities of worship in each church.

Someone who can balance competing priorities, encourage our learning about each other, our faith, and our skills, supporting the people and activities of each church.

We can offer:

- Enthusiasm to move forward with excitement and eagerness.
- Receptiveness to new ideas and learn from the new incumbent.
- Warm and welcoming congregations in all three churches.
- Willingness to look to the future, to grow and develop.

If you are feeling God is calling you to exercise your ministry with us, and our opening introduction gave you the desire to learn more about our churches, communities, and people, we invite you to read on to our individual profiles where you will find more detailed descriptions of our churches' services and activities etc.

“Challenge ‘21” ~onwards and upwards!

Profile for the PARISH OF WRAXALL with FAILAND



With Parish Voices

DIOCESE OF BATH AND WELLS

April 2021 Website: <http://www.wraxallwithfailand.org.uk/>

Contents

Welcome	3
Who are we?	4
Where are we geographically?	4
Where are we spiritually?	6
Aspirations	6
Pre-Covid	8
Streamed Services	9
Congregations	9
Who we're looking for	9
Role Description	9
Skills we would like you to have	10
What our parish is looking for	10
What we can offer	11
Support outside the Parish	11
Support within the Parish	11
Church Activities	12
Outreach	13
Community Organisations and Activities	14
Wraxall School	15
Families & Children's groups	16
Finance	17
Buildings	18
Final Word	19
Appendix A – The normal pattern of services	20
Appendix B – Rectory details	21

Welcome

We offer you a very warm welcome as you read through our Parish Profile.

Wraxall with Failand is one Parish with two churches situated in a beautiful semi-rural area of North Somerset and is part of the Bath Archdeaconry in the Diocese of Bath and Wells.

It is clear that since March 2020, the COVID-19 pandemic has changed the way we do Church and the World itself in many ways. More changes are now happening, as in line with Diocesan plans for the future, our Parish becomes partnered with Trendlewood Conventional District, hence our Profile theme ~ "Challenge '21 onwards & upwards !"

Parish life was running in a stable pattern before COVID-19. The recent movements in our leadership, various effects of lockdown, together with the ever changing Government rules put in place to protect our communities, we, along with most other churches in the country have had to adjust to different ways of reaching out to and serving the church family and wider community.

"Challenge '21 O & U" aims to return the Parish to some sort of 'normal' .With the longstanding previous knowledge of serving our parish community and newly learnt skills adopted during lockdown we hope to transition into a more inclusive parish that makes it possible for housebound parishioners, who accessing an interactive platform, are able to join us again in regular worship. Streamed services, online fundraising and social events such as quizzes adopted during the crisis meant that we could all continue to serve, receive and share in the word of God.



Could you take on Challenge '21 Onwards & Upwards ?

Do you have the vision, commitment and inspiration to lead our Parish family and community?

Are you willing to lead us forward using our joint experiences to build on what we have achieved so far?

Keen to seek new opportunities to grow our congregations through developing our outreach and service to others?

If you think you fit this description please continue...



Who are we?

Wraxall with Failand is a Eucharistic and prayer based Parish with loyal, committed and valued members at both churches whose congregations mainly consist of the middle to older generations. We seek to proclaim the Gospel and in the name of Jesus, we welcome **all** to our accessible, inclusive and welcoming church family.



Where are we geographically?

Apologies because this section may sound a bit like an estate agent's advert but may have information which we hope is relevant and will interest you!

The Parish lies several miles to the South of Bristol on the B3130 1.5 miles to the north east of the town of Nailsea. It is widespread and mostly rural, with many working farms. Trendlewood Church is based close by. There are established housing estates and some small industrial areas nearby

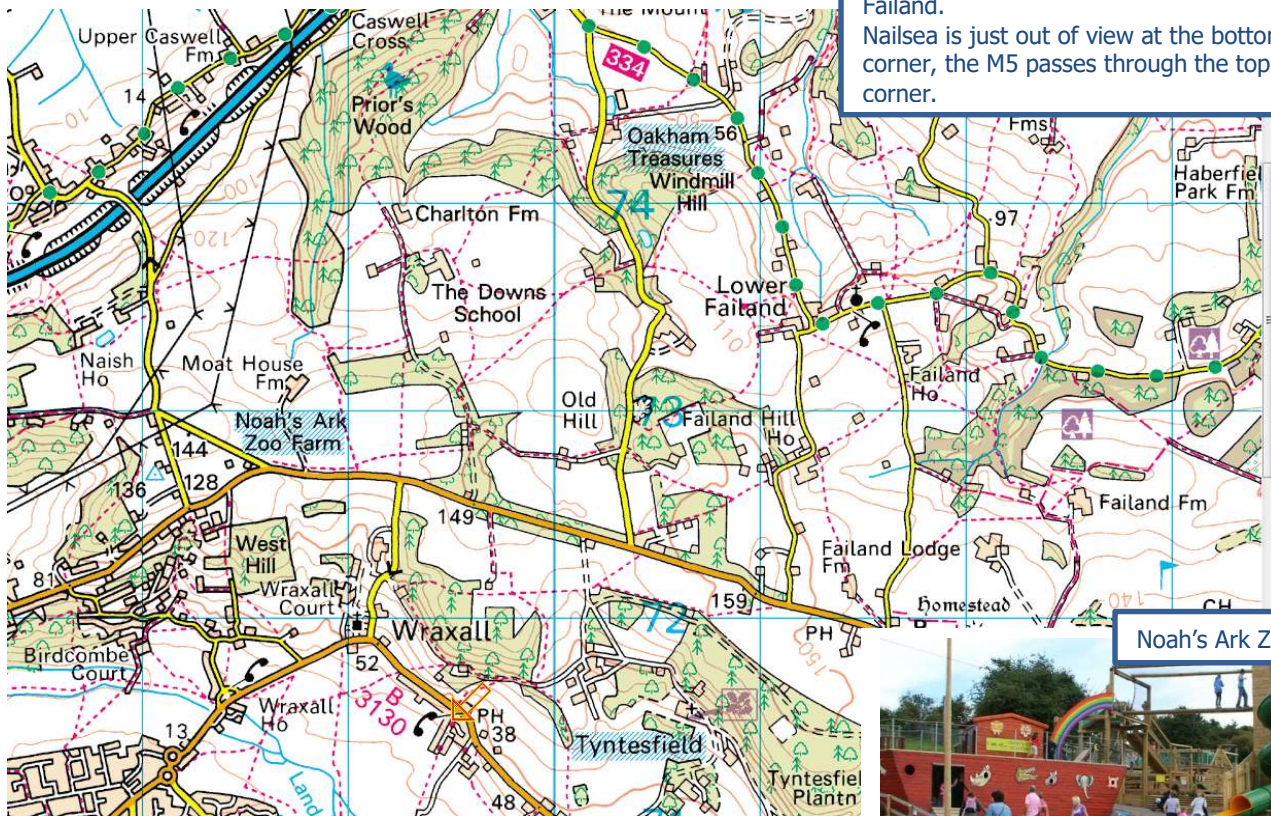
Wider area view, shows nearby access to the M5 motorway at junctions 19 & 20



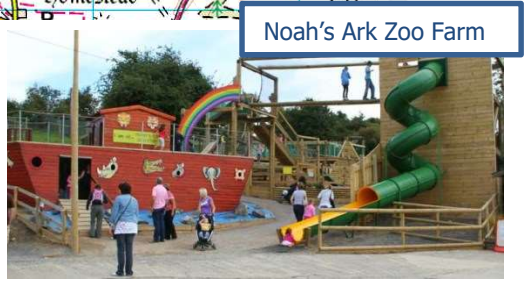
The nearest town, Nailsea, was in the past a village, but nowadays has expanded and become more of a commuter town. We are actively linked to other churches there through Christians Together in Nailsea & District, and to the Christian Counselling organisation, Wellspring.



The **Parish Rectory** is a modern 4 bed house situated on The Elms, Wraxall, located at the end of a cul-de-sac. It is approximately half a mile away from All Saints' Church and St Bartholomew's in Lower Failand is a 15 minute drive away.



The immediate area around Wraxall and Lower Failand. Nailsea is just out of view at the bottom left corner, the M5 passes through the top left corner.



A well supported Nailsea Community Group exists. Initially founded as a community support group for delivering supplies to sheltering and housebound folk when Corona virus and lockdown raised their ugly heads, but has become a stalwart resource in the town, reaching out to people in diverse ways, such as an emergency food bank, community larder aiming to reduce food waste, puzzle library and much more.

Good child care facilities are available, several primary & junior schools and a senior school, with other senior schools in the district. Access to further education is provided by colleges in Bristol and Weston super Mare, Bristol and Bath Universities, and the University of the West of England. There is a well-stocked library in the centre of town. The Downs School, a private school, is found towards the Failand end of the parish. All the various age ranges of Scouting and Guiding groups are based in the area.

Wraxall C of E VA school is situated on the B3130 immediately opposite All Saints. The children use the churchyard path every school day to safely bypass this busy main road.
Please see more about the school under 'What we have to offer' community section on page 16.

Two GP Practices & several dentists and opticians are based in the town. Further support to people is offered through Diabetic clubs, Memory clubs and similar facilities. The main hospitals and Children's hospital are in Bristol, with satellite units at Clevedon and Weston super Mare.

There are plenty of varied leisure and tourism opportunities available here along with mainstream and smaller sports facilities. Tyntesfield, a National Trust property, and Noah's Ark Zoo Farm are both in the parish. The National Cycle path runs nearby, together with more local cycle and foot paths, and horse riding areas.



Tyntesfield

Bristol and Bath boast various well known theatres, music venues, Soccer and Rugby clubs, and if you need a breath of sea air (well, Bristol Channel air!) Portishead, Clevedon and Weston super Mare are not too far away.

Where are we spiritually?

Mission Statement

In 2017 the parish created the following Mission Statement; this has been kept under review and we believe it is still relevant:-

- ❖ *We seek to be an inclusive church which welcomes all people in the name of God and does not discriminate on any level.*
- ❖ *A church which is scripturally faithful and seeks to proclaim the Gospel in ways that reach every generation.*
- ❖ *A church that serves the community, modelling, in the power of the Holy Spirit, how wide, high, deep and long is the love of Jesus Christ.*



Aspirations

To be faithful to this mission, we believe that we need to continue to build stronger links with our local community through:

- Identifying ways in which the Church and community can help each other
- Reaching out by organising events which cater for all
- Creating community service projects to support the old, the young, the poor and underprivileged, who are affected disproportionately by factors such as climate change and the Covid-19 pandemic

Leading to...

**Greater community involvement with us the Church.
Church growth, spiritually and hopefully numerically.**

In order to provide this, it will be necessary to have services and events which are accessible, welcoming and joyful.

Before preparing this Profile, we distributed a survey to ask our congregation, local school children and parishioners how they viewed Wraxall & Failand churches' service to them, what they regarded as important about us, and what they would like to see happening over the next 5 years. Their responses have been essential in shaping these visions and some of their answers can be found in the speech bubbles throughout this profile.

Just continue building on the families and at this time continue caring for all.

Along with a desire for more community interaction, the survey showed that people see falling numbers and financial sustainability as the most significant threats to the continued existence of the Church, especially in the current situation.

The community involvement outlined in our Mission Statement is intended to help with both of these concerns, but in the "new normal" (whatever that may be) there are likely to be no easy answers, especially to any financial difficulties. Fortunately the Parish is in a reasonably sound financial situation (*See Finance section on page 17 for further details*).

We would be interested in exploring more varied forms of worship, perhaps outside the box...

Café Church *Hot Potato Club* **Crafty Church**
Community Breakfast Walk and Worship
Short informal worship with Lunch

Allowing us to...

engage & encourage folk who fight shy of the more established formal styles of service, and find it difficult to make the first step into church life, or indeed to return after a break for whatever reason.



Christians Together in Nailsea and District

~ 'unites in pilgrimage those churches whose life and witness express the faith shared'

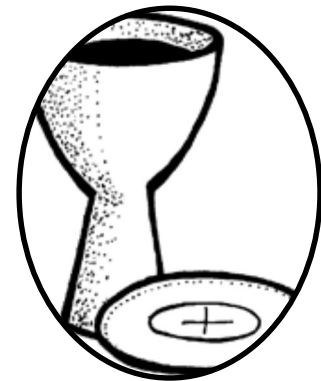
The Parish is a member of Christians Together in Nailsea and District which, in addition to three Anglican churches, includes Trendlewood Church, Nailsea United Reform Church, Nailsea Baptist Church, St Francis Church [RC], Nailsea Methodist Church and Southfield Road Church.

CTINAD provides locally organised activities and support for families and individuals living in the area.

In both Churches worship consists of a Eucharistic based and generally traditional 'middle of the road' style. At Wraxall All Saints, the first Sunday 10am ATIC [All Together in Church] family service generally attracts a number of younger worshippers. *(see Table 1 in Appendix A for details showing normal pattern & attendances)* While at Failand, St Bartholomew's largest congregation is made up from people attending Evening Prayer.

All Saints' Communion services generally follow Common Worship, using booklets which are adapted for each of the liturgical seasons. Communion, using the Book of Common Prayer is celebrated on the first Sunday of the month followed by an ATIC service, and each Thursday at 10.00am there is a said Service of Holy Communion in the Charlton Chapel.

St. Bartholomew's Communion services follow Common Worship, Morning and Evening prayer services follow the Book of Common Prayer.



When Covid rules allow indoor mixing to happen, we plan to resume our regular informal Service of Holy Communion held on the first Tuesday of each month in a house in Failand, and a said Service of Holy Communion before the Parish Lunch in Failand Village Hall on the third Tuesday of each month.

In both churches some Holy Communion services following the Iona style have been introduced and these are proving popular. Holy Communion is also taken within the community; to housebound parishioners and to the local Nursing/Dementia care Home



Celebration services are held on the Patronal Festivals of both Churches, and each Church hosts a Carol Service, on successive days. A traditional candlelight Lessons and Carols at St Bartholomew's and a more informal event at All Saints.

In 2020, of necessity, Parish Carol Services, and a Crib Service were held via Zoom during the week before Christmas, as were Communion services on Christmas Eve and Christmas Day. We also held an outdoor Crib hunt for our children in Christmas week.

Services and School events, marking annual Church year occasions, are provided in one or both of the buildings:

Advent, Christingle, Crib Service, Epiphany, Ash Wednesday, Maundy Thursday, Good Friday Services, Easter Sunday, Ascension, Pentecost, Remembrance Sunday and Services of Remembering are all celebrated.

Music

A rota of organists provides the organ music at All Saints' while St Bartholomew's is fortunate in having a regular organist. There is a music group at All Saints' for the ATIC & various other family services, comprising of piano, guitar and around 5 voices. This group actively seeks and encourages new members.

Occasional Offices held across the Parish In 2019:

- 5 weddings (3 in Wraxall, 2 in Failand)
- 10 baptisms (6 in Wraxall, 4 in Failand)
- 16 interments of ashes (11 in Wraxall, 5 in Failand)
- 11 funerals (9 in Wraxall, 2 in Failand)



Streamed Services

During Lockdown via Zoom: We hold Morning Worship three days a week, following the structure of the Northumbria Community and Holy Communion on Thursdays and Sundays following Common Worship and/or Iona Community style services.

Currently - Between Lockdowns All Saints has celebrated said Holy Communion in Church at 9am followed by Parish Communion on Zoom at 10.30am. St Bartholomew's held Evening Prayer twice monthly in Church. As we move out of Lockdown 3, we are combining live services in church, continuing with some Zoom services offering, we hope, the best of both worlds for the meantime. Both churches are again open for private prayer subject to national and seasonal restrictions. Adjustments and adaptations are required at times to ensure we can all worship together.

Looking forward, our hope is to stream services from Church all through the year for all those unable to worship in person.

More Zoom services following COVID19

Congregations

At All Saints a number of younger families attend the ATIC services. These families mostly come via our close links with Wraxall School.

There is considerable enthusiastic Lay participation in services. Aside from our Reader who assists with the Ministry of the Word, Gospel Reading and preaching, rotas are organised for:

- Authorised administrators to assist at Holy Communion
- Readers for the Bible passages of the day
- Intercessors
- The Offertory procession
- Serving refreshments (often with lush home-made cakes!) after our main and celebratory Services

At St. Bartholomew's members of the congregation share readings and authorised administrators assist at Holy Communion.

Who we're looking for... in conjunction with Joint Section one, page 5

Role Description

This section seeks to outline key tasks that the new incumbent will undertake, in conjunction with the Ministry team and Lay people involved with the running of the Parish

- ❖ planning, organising and conducting a programme of worship, teaching and preaching that supports the Parish vision and needs
- ❖ to further develop relationships with community and external organisations and promote positive links with the church
- ❖ ensure that structures and resources for parish organisation are appropriate, including clear boundaries and accountabilities of roles

If the church wasn't there...I would miss the wonderful support from all my fellow Christians. It fills me with energy to take me through the week.

- ❖ sharing ministry as appropriate and working with others, (including clergy colleagues, churchwardens, PCC, staff and volunteers) to identify individuals' gifts and talents so they can be deployed effectively together with appropriate use of resources e.g. music.
- ❖ in conjunction with the Lay Pastoral Assistant, identify pastoral care needs and use appropriate structures and skills to deliver this support to the congregation and community,
- ❖ The Parish churchwardens are fully aware of their duty to support our clergy in every way and feel it is vital that, alongside his/her Parish obligations, an Incumbent's role should also include: Self-care and development, renewal, relationships, friendships and personal health. We believe sufficient time should be made for family and recreation, taking weekly time off and using full holiday entitlement.

The need to listen and seek to understand issues from another perspective. To recognise the need to adapt to climate change and live in a more sustainable way.

Skills we would like you to have...

- Positive and confident leadership with the flexibility to delegate
- Effective and coherent communication, information sharing and team management skills
- Compassionate with pastoral awareness
- Enthusiasm and vision to build and encourage effective and meaningful relationships within the School community
- Engage all to worship, explore and embrace new ideas for how to worship
- Effective time management.



What our parish is looking for...

These are the most frequent responses relating to 'qualities needed in our next priest' copied from our Parish Survey.

Enabler *Team builder* **Supportive**
Friendly and Caring *Enthusiastic* **Approachable**
Solid Faith **Pastoral carer**
Inclusive **Innovator** *Creative*

To ensure the church remains a welcoming and friendly place where everyone can feel at home.

What we can offer... in conjunction with section one page 6

- * Church families who after Lockdowns, Covid-19 restrictions and steep learning curves regarding Zoom etc., are looking forward in faith to accepting the Diocesan proposal to bring our Parish together with Trendlewood Conventional District under one Incumbent.
- * Congregations willing to respect others' opinions & traditions, flexible enough to accept necessary changes, and work together with a dedicated visionary enthusiastic leader.
- * Communities who support their churches even though they may not be regular attenders
- * A Youth & Families Worker, who is also our efficient Parish administrator (See page 12)
- * A Registered Lay Pastoral Assistant (see page 11)
- * A Verger & experienced efficient teams involved with everyday running of Church (See page 12)
- * A strong Safeguarding policy, with a designated Safeguarding Officer (See page 12)
- * Cross Tree Centre, A modern well equipped building in the grounds of All Saints (see page 14)

Support outside the Parish

We are supported by our Archdeacon, and belong to Portishead Deanery. Please see the Appendix on P32 for more information

Support within the Parish

Ministry Team:

Revd. Carol Edwards – a retired Priest and a member of the All Saints'
Mrs Sylvia Phillips – Reader
Mrs Eileen Oates – Lay Pastoral Assistant
Mrs Elize Jutsum – Children's and Families Worker

Together, the Ministry team, Churchwardens and Verger make up the '**Core Team**' who are managing the Parish during the vacancy. A task made more complex by the COVID-19 pandemic.

Baptism preparation is carried out by our Reader. Bereavement visits and Funerals are carried out by the officiating priest, usually either Rev Carol or any other person charged with leading a funeral service. Marriage preparation is shared across the local churches at a Marriage Preparation Weekend.

I would like
someone to talk to
in times of need.

(Community)

Lay Pastoral Assistant

In normal circumstances, regular Home Communion and visiting the unwell would be carried out by a member of the Pastoral Care Team, administered by our Lay Pastoral Assistant. Sadly, through Lockdowns this has not been possible due to national restrictions. All regular members of the congregation were assigned to one of the team (at the moment there are 9) each with an overseer responsible from time to time for checking their wellbeing every week. Currently once monthly the team members, contact folk on their list,

shop for any essentials they may need and report back any difficulties they may be experiencing.

Churchwardens

The Parish has three Churchwardens, two based at All Saints and the other at St. Bartholomew's. Working as a team, with a Deputy Warden based at each church, all have different complementary gifts which they bring together as they care for the people and buildings in the Parish.

Parochial Church Council (PCC)

The PCC currently consists of 13 members excluding the incumbent and PCC Secretary. This number includes the Churchwardens, Reader, Treasurers and Deanery Synod Representatives. A Lay person chairs PCC and Standing Committee meetings. The Parish Administrator is our PCC Secretary.

Parish Safeguarding Officer who reports to the PCC regularly and has direct access to the Diocesan Safeguarding Team when necessary.

Families and Children's worker We are very blessed to have a Children and Families Worker in the Parish who is totally dedicated to her ministry and is actively encouraging children (and their parent /carers) into the Church family through 'Sunny Saplings' our family & toddler group and organising older children's activities. Other family orientated events take place and she assists in strengthening links with Wraxall School. *please see her description of her work on page 16.*



Lay support

Much of the routine administration of the Parish is carried out by lay people. The team is involved with preparing rotas, leading intercessions, reading the lessons, and taking up of bread and wine at communion services, they are currently taking up the reins again after our enforced 'break'

Sidespeople

In both Churches we believe that it is vital to provide a warm welcome as people arrive for Worship so we have appointed teams of friendly volunteers from the congregation to carry out this role.

Verger All Saints employs a part-time verger who assists with services, orders supplies, and opens and closes the Church each day. All Saints' is open for the hours of daylight every day.

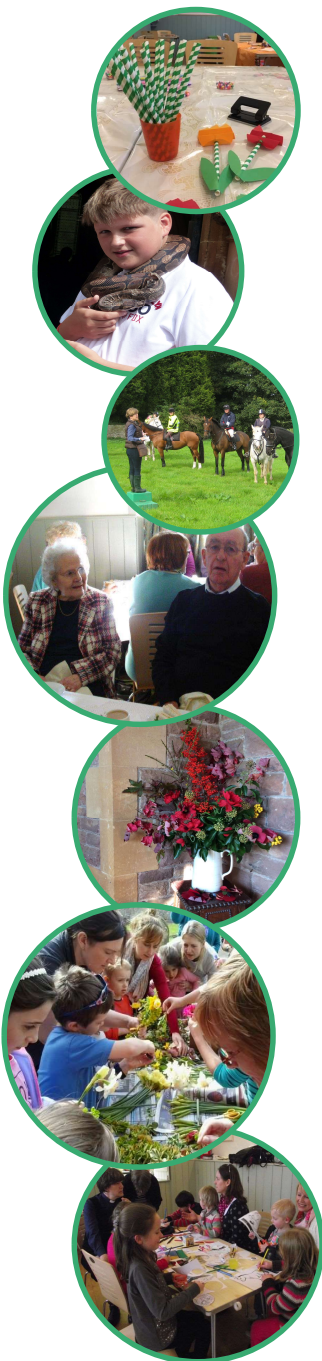
Parish Administrator Employed for 12 hours a week (part-time), covering the whole parish and based in the Parish Office situated in the Cross Tree Centre.

Wraxall Parochial Charities (Community Organisation): the incumbent is a trustee of this Charity.

Church Activities

As with other aspects of life, the activities of most Church groups have been severely curtailed by the pandemic. What follows describes the groups held across the parish pre-Covid, and we look forward to re-starting them as soon as rules allow

Togetherness (Community)



- **Crossta Coffee** and **Sunny Saplings**, our Family & Toddler group held Wednesday mornings in school term time.
- **Crafty Crossta**, primary focussed but open to all ages held on a Wednesday morning in the school holidays.
- A **Julian Group** meeting, open to all, is held on the first Monday afternoon of each month
- **Bible Study and Explorer** groups, 6 sessions held on Wednesday evenings.
- **Wraxall Mothers' Union** has existed for over 100 years! Held on the afternoon on the first Wednesday of the month.
- **Annual Horse and Pet Services** usually held at St Bartholomew's
- **Time for Tea**, aiming to combat loneliness within the community through visiting speakers & food! held on second Thursday afternoons.
- **Food@4.30**, a faith based exploration for ages 5-11, held on third Saturday afternoons
- **Parish Lunch**, preceded by a short Holy Communion, 30 - 40 people meeting on one Tuesday a month in Failand .
- **Flower Arranging Teams**, skilled bands who decorate the churches all year according to the season and for life services such as weddings & funerals.
- **Entertainment Committee**, an enthusiastic group who cater for Church and Community events in either the churches or the community spaces in the Parish.
- **Churchyard working parties**, held on second Saturday mornings. Groups at both churches help to maintain the natural environment within the churchyards.
- **Bell Ringers** – All Saints has a tower with eight bells and a regular band of Ringers augmented by visitors who attended practices on Monday evenings (and will again as soon as guidelines make it possible!) All Saints is part of the Chew Branch of the B & W Diocesan Association of Church Bell Ringers. Wraxall bells are very popular and we often host visiting /touring bands from many other areas.
- **Carol Singing** – This outreach has proved to be very well received and is planned to be continued in the future. Over the past few years younger members of the church family have travelled around the Parish to sing carols for the church family. We are welcomed annually into the local dementia care home to sing for the residents and their family members/staff. This is always an emotional but uplifting occasion when musical memories are triggered, and some folk are able to join in the singing.

I value...The quietness of the beautiful church for reflection and prayer.

Outreach

Parish Charitable Giving Plan

Various charities are well supported by our Parish, raising funds for local and worldwide Charities. We have used some innovative ideas over the years (usually involving food... but not always!) We are discovering creative ways to fundraise using online sites and wireless technology!

We are committed to raising £1000 annually as our share of CTINAD support for the Connect Christian Youth Worker, working among students and staff at Nailsea School. This is a valued and much needed ministry which is expanding as the effects of Covid-19 are being felt more widely in the School.

Charites we have supported

Children's Society *Mothers Union Projects* CMS
Nailsea Food Bank The Leprosy Mission
Caring at Christmas Salvation Army *Send a Cow* **SAT 7**
MAF Christian Aid **DEC for world disasters**



Harvest 2020 thanksgiving projects supported the Salvation Army (outreach to homeless people in Bristol) and 'Send a Cow' (a charity originally started by one of our local farmers). Our generous congregations succeeding in raising enough to fund the purchase of three chickens and four cows, getting on for a herd! Our achievements were praised in our local paper North Somerset Times.

Community Organisations and Activities



The Cross Tree Centre behind All Saints' Church consists of a restored school room and library plus an extension housing what is now the Parish Office, toilets and catering facilities. The hall houses audio visual technology which is ideal for conferences. The new building was opened in 2009 and is used for church based and community events. It is well furnished with a medium sized hall, modern well equipped kitchen and toilets.

The hall is home to Sunny Saplings Toddler Group which meets there on a weekly basis during term time. Each month, Mother's Union and Wraxall branch of WI (both celebrating their 100th anniversary), Time for Tea and the local Parish Council meet in the CTC Hall.

The facilities are also well used by the Parents Association from Wraxall School (FWSA), life event celebrations, business functions and is also used as the local Polling Station by North Somerset. Hiring fees provide additional income.



Annual Parish Summer Fete, St Bartholomew's Garden Party and Christmas Fair: These are great outreach opportunities and encourage community participation. (They are also good fundraisers!)

Failand 'Champing': St Bartholomew's has launched a scheme offering camping facilities either inside the church building or in the adjoining field which has potential for further community fundraisers i.e. car boot sales.

Orchestral and Choral Concerts: St. Bartholomew's is privileged to be one of six venues that The Bristol Chamber Orchestra visits. Together with similar events at All Saints these occasions are very well attended.

Pantomime: this has become something of a tradition, where Church members are seen in very different roles! This fun event has been held in All Saints Church every two years and proved to be another great opportunity for relaxed & positive outreach to the community. We'll be back !!

Harvest Barn Dance: An annual parish celebration with a ceilidh and ploughman's lunch which is organised by the Entertainment Committee. Sadly missed in 2020, looking forward to taking our partners again post-pandemic !



Wraxall C of E VA Primary School

We have meaningful links with the primary school, situated opposite All Saints' Church in Wraxall village. The school is part of the Lighthouse Schools Partnership Multi-Academy Trust. Church members hold positions on both the Board of Governors and the school staff. The involvement of church members in everyday school life is welcomed whether it is on a weekly or annual basis. For example; teaching basic Sign language or special events like school Christmas parties, PTA fundraisers and assemblies.



I don't like sitting still for a long time.

I like watching the pictures on the screen.

The Incumbent normally meets with the Head teacher to coordinate Collective worship within the school and leads services on a regular basis following the Christian Values that form the foundations of the Christian Ethos of the school. Special services such as Christmas, Easter and the School Starters and Leavers are all held in the church.

During the Vacancy our Children's worker and Lay Pastoral Assistant are sharing responsibility for this, along with others' help as required.

The close links with All Saints' Wraxall contribute significantly to making the school the very special place that it is. The children and staff appreciate being able to visit the church and churchyard regularly for services and for curriculum enrichment.

The spiritual support that the church community offers within our school is also highly valued embedded within the pastoral care provided to families through community groups, events and services held.

More things to explore in Church.



More details of the history of the school can be found in "What did you learn in school", written by William Knight.

Food@4.30

This is a monthly group where children ages 5-11 gather to hear stories and explore their faith whilst having fun with crafts and games. At the end we share a simple meal together. Parents are welcome to stay and join in or leave their children in the care of our group organizers. This group has flexibility at times with activities it does or times it meets, for example the children hosted a climate change [Quiz@4.30](#) for adults via Zoom for One World Week this year during the national restrictions.



Sunny Saplings

A family friendly baby and toddler group which runs weekly on Wednesday mornings with snacks, faith stories, singing and crafts. It is well attended by mothers and children who do the school run to Wraxall primary. Craft packs have also been sent out for the children to enjoy at home for life events such as Mother's/Father's day, Easter and our Patronal celebration. We use the outdoor space in the grounds of the church to enjoy seasonal activities, this Autumn we organized a pumpkin letter hunt and leaf colour matching. During lockdown, we used Zoom to keep the group in touch with us, and each other, sending the children Bible stories, linked activities & games.

Crafty Crossta

During the school holidays, in the Cross Tree Centre, we run a craft event for primary aged children with a seasonal or faith based theme. Refreshments are served for all, and parents can enjoy some informal chat. This offers a great opportunity to catch up with or get to know new families within our community.

Finance

The Parish is registered with the Charity Commissioners and has its own Charity Registration number. The annual accounts have to be produced in accordance with the Charities Act as a combined or 'Consolidated' set of accounts.

Each church has its own dedicated treasurer, the All Saints' treasurer also being responsible for production of the year end consolidated accounts. Committed volunteers look after the Gift Aid scheme tax recovery and Charity Giving. St Bartholomew's has the benefits of The Vaughan Trust.

In practice each of the two churches within the parish maintain their own financial records and keep their own bank and investment accounts. The Parish Share, however, is paid jointly on a monthly basis and is always paid in full.

Advanced software packages are used to ensure that the format of the Annual Accounts meet the requirements of the Charity Commissioner. The accounts for 2019 have been produced and examined by an Independent Examiner with no come back. These were accepted at the APCM held on 18th October 2020 – usually held in April but delayed this year due to the national restrictions. They are published as part of the Annual Report, which can be [viewed here](#).

The value of our funds at the end of 2019 were:

Unrestricted	£93,370
Designated	£37,724
Restricted	£32,008

In contrast to these assets, day to day finances are tight. Total income from the two churches is around £110,000 pa but they both struggle to get near to breaking even (the 2019 figures were distorted by a number of generous legacies).

The main income streams are the giving of the congregations (largely paid by standing order), marriage and funeral fees, the annual fete, an annual gift day, some investments and land rents.

The major outgoings are the Parish Share (£61,000 for the two churches in 2019, falling to £53,000 in 2020), salaries, church building utilities and maintenance. Charity giving in 2019 amounted to just under £4,000 (*see page 13*).

A budget plan is produced each year which is monitored against quarterly results.



Buildings

All Saints Wraxall is grade one listed, and mainly perpendicular in style, the oldest stonework being the Norman south door arch. Some of the windows are attributed to Charles Eamer Kempe, members of the Kempe Trust travel from all over to see them. The reredos is made of Bath stone and is unique among the churches of old Somerset in that it depicts the Transfiguration of Christ. The West Tower, is 85 feet high, with a clock face dating from 1730.



In addition to the church there are two other buildings in the church curtilage:



The **Cross Tree Centre** behind the Church building was originally a schoolroom founded in 1809. The renovated classroom and new sections of the building were completed in 2007/9 with money raised from local fundraising events, the Heritage Lottery Fund and the Diocese of Bath and Wells.

The building contains the parish office, a meeting room for up to 60 people and the usual offices including a well-furnished kitchen. It is used by a number of groups from around the parish and from the wider community.

The nineteenth century **Church Lodge** which stands at the entrance to the church yard was built originally to house the school mistress/master of the school. It is an attractive two bedroom house with its own garden and garage. It has been extensively modernised and is currently let on a six month lease.



St Bartholomew's, in Lower Failand, was built in 1887 and is grade 2 listed.

There are several beautiful windows in the church and a fabulous tapestry depicting pilgrims travelling to Canterbury. The tapestry was designed and embroidered by Mr Edwin Hayes of Capel Curig, Snowdonia.

It took nine years to make and contains sixty animals including a discreet mouse!

A stone broach spire rises over the South porch crowning the tower. The total height is 120 feet. The clock is more than 100 years old and has a movement built by Dent who also designed and made the movement for Big Ben.

When Richard Vaughan built the church, he left a niche just above the entrance. This was intended for a statue of St Bartholomew. One hundred years later, a small number of private donations enabled his original intention to be fulfilled.

Both churches have stunning views from their churchyards, from All Saints you can see as far as the Mendip Hills and from St Bartholomew's you can see over the valley towards the Severn Bridges and Wales

Challenge '21~ onwards & upwards!

Final Word

**If you are reading this page...congratulations!
You've made it all the way through our Challenge 21 ~ O & U Profile.**

We hope you found the description of our parish exciting enough for you to consider taking up the challenge to become an integral part of our new church family, and wider community; helping us to move forward in our vision to develop outreach and service to others around us alongside your commitment, inspiration and drive.



**We thank you for your interest
and for your time given to read the information we have offered.
We look forward to meeting you as a prospective
candidate, and pray that God will guide, inspire
and bless you with His peace.**

Appendix A – The normal pattern of services

Prior to the Covid-19 crisis the normal pattern of worship was as shown in the following table.

<u>Day of month</u>	<u>Service</u>	<u>Description</u>	<u>Average attendance</u>
1 st Sunday	8.30am Wraxall 10am Wraxall 3pm Wraxall 6pm Failand	Holy Communion BCP ATIC Sycamore Lodge Service Evening Worship	16 38 + 8 12 14
2 nd Sunday	10am Wraxall 11.30am Failand	Holy Communion Morning Worship	33 8
3 rd Sunday	10am Wraxall 6pm Failand	ATIC Holy Communion Holy Communion	35 + 4 12
4 th Sunday	10am Wraxall	Parish Communion	35
5 th Sunday	Alternate Churches	Joint service	None in 2020
Every Thursday	10am Wraxall 3.30pm Wraxall	Midweek Holy Communion Sycamore Lodge Communion	8 4
3 rd Tuesday	12.15pm Failand	Parish Lunch Holy Communion	14
1 st Tuesday	10am Failand	Home Communion	Not known

The average attendance figures are from the first 3 months of this year, up to the beginning of lockdown. The ATIC figures are adults + children.

ATIC – All Together In Church, all-age services. The first Sunday ATIC is very informal, mainly aimed at children. The third Sunday ATIC is a Communion service using a liturgy based on that published by the Iona Community. The Parish Lunch Communion takes place in Failand Village Hall, prior to the monthly Parish Lunch.

In the initial stages of the Covid-19 lockdown, all services in church were suspended and were replaced by 'virtual' services using Zoom. These were at 10.15am on Sundays and 10am on Thursdays. Limited services in church have now been re-started and the current pattern for Sundays is as follows.

<u>Sunday</u>	<u>Service</u>	<u>Where</u>
First	9am Morning Worship 10.30am Holy Communion (Iona) 6pm Evening Worship	Wraxall Zoom Failand
Second	9am Holy Communion 10.30am Holy Communion	Wraxall Zoom
Third	10.30am Holy Communion (Iona) 6pm Evening Worship	Zoom Failand
Fourth	9am Holy Communion 10.30am Holy Communion	Wraxall Zoom

The 10am Thursday Holy Communion on Zoom continues. Liturgies for the Zoom services are available on the church website, on the Covid-19 pages. Attendances at Zoom services have generally been of the order of 25-35 people, with more on special occasions..

As circumstances change it is expected that the pattern of services will continue to evolve.

For example we are currently experimenting with live streaming services from church, using Zoom, with a view to combining the 9am and 10.30am services into a single service at 10am, in church and on Zoom simultaneously.

The "new normal" pattern of services beyond the current crisis is still to be determined, in conjunction with the new Incumbent, but it is hoped it will include an online element, to allow those who cannot attend church in person to continue to be involved.

Appendix B – Rectory details

Entrance Hall

Double glazed door enters into a generous entrance hall, with single radiator, smoke detector, balustrade staircase ascending to the first floor accommodation with useful storage cupboard under, coved ceiling, thermostat for central heating, alarm panel and doors to cloakroom, study, dining room and kitchen.

Cloakroom

An unusually big cloakroom, fitted with white suite comprising: close coupled low level wc, pedestal wash hand basin with tiled splashback, single radiator, coat hooks and UPVC double glazed frosted window to rear.

Dining Room

12' 6" x 11' 5" (3.81m x 3.48m)

Coved ceiling, single radiator and UPVC double glazed window to front.



Study/Playroom

11' 5" x 9' 7" (3.48m x 2.92m)

Coved ceiling, telephone and television points and UPVC double glazed French doors lead through into the conservatory.



Conservatory

17' x 11' 5" (5.18m x 3.48m)

A superb addition to the house, being of UPVC double glazed construction with dwarf walls. Laminate flooring, fitted louvre blinds and French doors to garden.



Kitchen/Breakfast Room

15' 8" x 11' 6" (4.78m x 3.51m)

Fitted with a comprehensive range of Cherry coloured floor and wall units with roll edge worksurfaces over and tiling to splashbacks. Inset one and a half bowl sink unit with waste disposal unit and mixer taps, integrated 'Neff' dishwasher, integrated 'Neff' fridge and freezer, integrated 'Neff' fan assisted double oven, gas hob and extractor, 2 wine racks, pelmet lighting in addition to lighting over the sink, ceramic tiled floor, double radiator, telephone and television points, inset low voltage ceiling lighting, UPVC double glazed windows to front and side aspects and door to utility room.



Utility Room

11' 6" x 6' 4" (3.51m x 1.93m)

Fitted with a range of floor and wall units matching those in the kitchen, with roll edge worksurfaces over and tiling to splashbacks. Inset stainless steel sink, plumbing for washing machine and space for tumble drier, ceramic floor tiling matching the kitchen, wall mounted boiler serving the gas central heating and the domestic hot water, extractor fan, single radiator and double glazed door to garden.

First Floor Landing

2 single radiators, 2 smoke detectors, further balustrade staircase ascends to the second floor accommodation. UPVC double glazed windows at either end making this a very bright area. Pleasant outlook from the rear of the house across the surrounding area.



Drawing Room

22' 9" x 11' 5" (6.93m x 3.48m)

A lovely bright room, with UPVC double glazed windows at either end, the rear having a very pleasant outlook. Contemporary styled feature fireplace with living flame gas fire, television and telephone points & 4 wall lights.



Bedroom 1

15' x 11' 7" (4.57m x 3.53m)

2 built-in wardrobes, telephone and television points, UPVC double glazed windows to front and side aspects. Door to en suite bathroom.



En Suite Bathroom

11' 6" max x 7' 8" max (3.51m max x 2.34m max)

A very generous en suite, comprising: 'Jacuzzi' bath with retractable shower hose, separate shower cubicle with thermostatically controlled mixer shower over, pedestal wash hand basin, close coupled low level wc, tiling to splashbacks, shaver point, double radiator, extractor fan and UPVC double glazed frosted window to rear.



Second Floor Landing

Coved ceiling, smoke detector, access to loft via pull-down ladder, single radiator, built-in airing cupboard housing the lagged hot water tank and immersion and UPVC double glazed window to rear with superb views.

Bedroom 2/Guest Suite

16' 5" max into door recess x 11' 10" (5.00m max into door recess x 3.61m)

Built-in wardrobes, single radiator, coved ceiling and door to en suite shower room. UPVC double glazed windows to front and side aspects with pleasant outlook.



En Suite Shower Room

White suite comprising: shower cubicle with thermostatically controlled mixer shower over, pedestal wash hand basin, close coupled low level wc, tiling to splashbacks, single radiator, extractor fan and shaver point.

Bedroom 3

18' 4" x 10' 7" (5.59m x 3.23m) FORMERLY 2 ROOMS
2 built-in wardrobes, single radiator, coved ceiling, telephone and television points and 2 UPVC double glazed windows to front.

Bedroom 4

11' 10" x 9' 10" (3.61m x 3.00m)
Coved ceiling, single radiator, television point and UPVC double glazed window to rear with lovely outlook.



Family Bathroom

White suite comprising: 'Jacuzzi' bath with retractable shower hose and thermostatically controlled mixer shower over, close coupled low level wc, pedestal wash hand basin, shaver point, single radiator, extractor fan and UPVC double glazed frosted window to rear.

Front Garden

Laid to lawn and enclosed by shrubs. Driveway leads to the double garage. The property also boasts a second, block paved driveway adjacent to the garage which provides space for boat etc. (space for up to 6 cars) Timber shed.

Detached Double Garage

With light and power. Useful loft storage area.



Side & Rear Garden

The rear garden consists of a large paved patio area, which continues around the side of the house to provide plenty of usable recreation space. The patio area is enclosed by timber balustrading, which divides this from the lawned areas of the garden. These are surrounded by well stocked shrub borders. A timber decked pathway leads you to one corner of the garden, where you will find a timber decked area with sunken fish pond & recessed spotlights which look attractive at night. Exterior power points. Timber shed. Enclosed by timber fencing. Westerly aspect.



Trendlewood Church



Welcome

We are a Church that is an independent conventional district* within the Parish of Holy Trinity Church, Nailsea. We achieved this status in 2017, having been a church plant since 1989.

Our vision is to be Christ-centred in all we do, work with the wider church to share that life with the local and broader community, becoming a haven for families and people of all ages to be cherished and supported.

We therefore see our purpose to flourish in growth and mission, building up and reaching out in support and love within the community and wider world, becoming a magnet for developing new leaders and missionaries.

The Plant that plants - This year we became the Plant that plants when a group of families left our church to start a more informal worship community in neighbouring Backwell village, a much prayed for step for them and our Church. And it represents a new beginning for us as a much smaller and older church community.

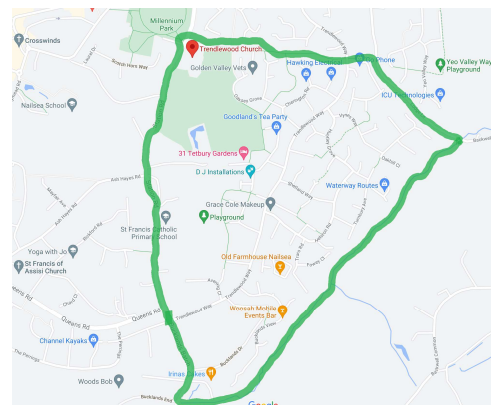
Services

- ▶ Pre-pandemic, our normal pattern is a weekly 10.15am service at Golden Valley School, known as Morning Praise, which lasts about 75 minutes. We use an informal worship style in our services, loosely coupled to the Church of England liturgy. Music is led by a group of musicians and an extended time of sung worship towards the beginning of each service is important to us.
- ▶ Our Church uses a broad mix of worship songs, from modern newly released songs to older Choruses and occasionally hymns, usually led by piano or guitar with vocalists and a small range of supporting musicians.
- ▶ Communion is celebrated on the fourth Sunday of each month and at major festivals. We offer an inclusive table, where all are welcome and our children of all ages are invited to receive bread and a raisin in place of wine.
- ▶ During the school holidays we often host an all-age service lasting a maximum of an hour and adopt a Café style setup
- ▶ We also host a monthly evening service, started by our current curate which is focused on ministry and soaking prayer.

There are also additional services at Easter and Christmas to tie in with these important festivals.



Café Church Style



Trendlewood Conventional District

**On January 1st 2017 Trendlewood Church moved from church plant status and became an independent Conventional District with its own Church Council and separate finances to Holy Trinity. This agreement between the Rector of Holy Trinity and the Minister of the Conventional District has to be re-signed at every change of personnel but there is a 'Memorandum of Understanding' that both churches agree with the arrangement and expect it to continue.*

Children's and Youth Work



Until recently, we offered two age-related children's groups during our Sunday service, but as a result of our Andy's plant (see later) and the pandemic, we now have very few young people attending.

We have, however, seen a recent small blossoming within our youth work. We jointly run a group called 'Last Sunday', a monthly discipleship group for young people aged 11-16 run currently by our Vicar and other local youth workers. It is ecumenical.

Children and Youth work is a really important area for us and an area we really want to grow. We have saved up funds to employ a family or youth worker to help us start to address this, but the pandemic has not made this possible to date. We have a commitment to safer churches for all and take this seriously. Ruth is Trendlewood Church's Safeguarding Officer.

Other Activities

We have three home groups which meet for study, mutual support and prayer. These are encouraged to grow and multiply, but recent circumstances have made this difficult.

The Pastoral Prayer Group meets every three weeks or so and fields the prayer needs of members of the church, allocating visits, cards, flowers and occasionally food support, as necessary.

During the pandemic the desire for a monthly 'Going Deeper' Bible study was expressed and has been setup online and is proving popular.

'Men in Pub' is a small Monday night gathering of Trendlewood men for a drink, social chat and mutual support.

Men's breakfasts happen on a monthly basis, alternately in a local home on a small scale and in The Old Farmhouse Pub 'The Big Breakfast' in conjunction with other churches. These events are popular, attracting 40-50 men and good guest speakers.



A Social Events Programme is put together annually with a variety of events chosen specifically to be outsider-friendly. One of our many successful events is our shared lunches held 3 to 4 times a year and well attended. (see left).

Major Achievements:

We have been very successful at fostering and supporting the growth of our church, with several members deciding to become ordained, others becoming worship leaders and most recently, our desire to plant a new church in Backwell called Andy's. This has been a very successful joint initiative with the St Andrews Church in Backwell, but has led to most of our families, who lived Backwell, moving with the plant.

Trendlewood Community Festival is a large local outdoor community event every few years and has been a huge success. It was started by our church but is now chaired by a local volunteer and has other non-church members on its committee. The next one is planned for summer 2021. It has been really successful at bringing the community together. (see right)



'Skate Fest' is an annual competition based at the Millennium Skate Park. The church has invested in this over many years and has the opportunity to give testimony as well as offer prizes for this popular community event. It is led by Phil Williams, a member of Holy Trinity. Trendlewood offers person power and sponsorship.

The Nailsea Beer and Cider Festival is supportive of many local charities and a good community gathering event. Local clergy sometime take stints behind the bar and Trendlewood Church sponsors an ale.

We have a good supportive relationship with the school. The clergy take assemblies and a member of our congregation (Pauline) is a governor. We also support their fund-raising efforts and social events by sponsoring certain fundraisers or offering members of our congregation to help run stalls etc.

Mission Partners

Our mission partnerships are important to us and we only take on links with those known to the congregation, usually with a member of the church deemed as the focal link. We currently support:

Jenny and Elifadhili Ayo in Morogoro, Tanzania (Jenny was a member of our congregation)

Michael and Tracy Kohl in Morecambe, Lancashire [West End Impact](#) (linked through a year-long worship leader placement)

Mark and Megs Walters Katanga, Uganda Project [Hope for Life](#) (both were originally members of our congregation)

[Mercy Ships](#), regularly crewed and served by Ed and Ruth Sheffield (both current members of our congregation)

Through our outreach fund we also support:

Christians Against Poverty Debt Centre

Churches Together in Nailsea and District (explained in the Wraxall with Failand profile)

Nailsea *Connect* Schools Project

Buildings

The current Trendlewood Church Vicarage is a modern five-bedroomed detached house on the Trendlewood Estate, but under the new arrangements this is unlikely to become the home of the new minister. Most likely will be the adoption of the Wraxall Rectory on 'The Elms' (the next estate to Trendlewood) and within a mile of both Wraxall and Trendlewood Church.

As the current vicar at Trendlewood Church, retires and therefore vacates the Trendlewood Vicarage, we are keen to explore options which could lead to us keeping a physical presence on the Trendlewood Estate and we may, therefore, want to negotiate the future use of this building.



Finance

We are blessed to have a congregation that gives generously and continued to do so despite the challenges of 2020. As a result, we continue to have plentiful reserves to finance the future work of Trendlewood Church and can look ahead without the financial worries faced by many churches at this time. This also enabled us to make a voluntary contribution of £3000 on top of our Diocesan Parish Share which represents the difference between Band A and Band B (where we are assessed to sit based on socio economic factors).

We did see a small reduction in giving during 2020 and expect to see a further fall in 2021 with the export of members to the new congregation at Andy's in Backwell. Gift Aid continues to provide a valuable source of income.

Overall Trendlewood Church had the blessing of a surplus of income over expenditure of £14,930 in 2020. The church council is considering how to put this to best use.

Trendlewood Church's Receipts & Payments Account

for the year ended 31 December 2020

	2020	2019
Incoming resources		
Planned giving	58,739	64,785
Income tax recovered	15,734	12,764
Legacy Gifts	500	-
Donations from Fundraising	178	1,456
Grants	1,000	-
Total incoming resources	76,152	79,005

Resources expended

Charitable activities:

Parish Share	42,837	42,195
Clergy expenses and Training	3,645	3,701
Outreach	1,931	1,987
Youth, Children's and Families Work	-	120
Rent, Property & Sunday Services	5,462	2,202
Administration costs	442	8,224
Mission Support	6,392	10,079
Giving from Fundraisers	343	-
Other	170	355
Total resources expended	61,221	68,863
Net (outgoing)/ incoming resources	14,930	10,142


Electoral Roll and Average Sunday Attendance

Last year we reported to the diocese that we had sixty-seven people on the roll, with thirteen residing in the conventional district.

Average Sunday Attendance 2011-2020

	2011	2012	2013	2014	2015	2016	2017	2018	2019	2020*
16 and over	41	41	48	49	49	45	42	41	42	27
Under 16	11	11	13	14	15	13	11	9	9	4
Total	52	52	61	63	64	58	53	50	51	31

* 2020 figures affected by Covid 19 attendance restrictions.



*See, I am doing a new thing!
Now it springs up, do you not
perceive it? Isaiah 43 v 19*

This role

So, having got this far in the document, we hope you will see what an opportunity this new role could be and how you could shape it?

To help identify whether you could flourish in this role, we have identified some of the key qualities which we believe will help deliver this role:

We are seeking a minister who can help us expand our current position, while continuing to impart fresh vision and lead us forward.

Some specific things we are looking for are:

- ▶ A clear passion for God and enabling his Church. For us, this would look like
 - A thought provoking preacher who leads us to discover and apply God's Word in our lives;
 - Re-energise our ministry to children and young families;
 - Bringing imaginative, thinking "outside the box" to help us develop our relationship with God and each other.

- ▶ An experienced leader, able to direct and support us to
 - Reach out to those outside the church through community based evangelism which meets people where they are;
 - A leader who enables and nurtures people's gifts;
 - Be an enthusiastic partner working with other churches in the area.

- ▶ A mature in-faith, Spirit-filled Christian, able to lead and support our pastoral volunteer team.

- ▶ Discerning and encouraging others in seeking a vision for Trendlewood / Wraxall / Failand. Effective time management and delegation of work.

- ▶ Computer-literate, with a knowledge of using *social media* as a form of outreach

- ▶ Committed to their own personal and spiritual development



"I feel at home, cared for and encouraged in my faith at Trendlewood"




trendlewoodchurch.org.uk



[@trendlewoodch](https://twitter.com/trendlewoodch)

Appendix

Our vision	 DIOCESE OF Bath & Wells Living the story. Telling the story.
In response to God's immense love for us we seek to be God's people living and telling the story of Jesus.	
<p>Our vision speaks of the story of Jesus; his life, teaching and work, his death and resurrection; the story which is the context of our faith and the content of our message.</p> <p>We seek to live this story as disciples of Jesus Christ in the world and to tell it, both in sharing the good news and by the way in which our lives speak about Him.</p>	

More details can be found here: <https://www.bathandwells.org.uk/who-we-are/vision/>

Portishead Deanery

All Saints, St Bartholomew's and Trendlewood Church are in the Deanery of Portishead. We are a friendly deanery. People get on well together and the clergy chapter is a place of mutual support.

We are committed to working together and ask all new clergy in the deanery to consider themselves a resource to the wider deanery. Most parish clergy have interests and specialisms. We encourage co-operation and working across parish boundaries.

The Synod recently took the decision to have fewer business meetings and more 'deanery meetings'. In this latter style we get together not just elected representatives but anyone who is interested in a particular subject. Recent sessions on youth and children's work have been well attended. The two deanery-wide meetings in 2021 are dealing with Living in Love and Faith and the Climate Emergency and in the last Deanery Synod we interviewed Bishop Ruth on the new vision for the Church of England in the 2020s.

Beyond the current Covid-19 emergency we look forward to meeting together again. Inevitably we will have to take some hard decisions together about deployment, pastoral re-organisation and finance.

The 25 parishes of the Deanery of Portishead have set ourselves a challenging deanery plan to:

- Visit all occupants of new-build housing at an early stage
- Increase the quality and quantity of our ministry to children, young people and young adults
- Tell our mission stories better in order to help and support each other

We look forward to meeting the new Rector of Wraxall with Failand and Minister of Trendlewood Conventional District

Rob Norman (Lay Dean)

Steve Tilley (Area Dean)