

# The Parish of Yatton Moor

In a group ministry with the parish of Cleeve with Claverham

*“For I know the plans I have for you,” declares the Lord, “plans to prosper you ..., plans to give you hope and a future.” Jer 29:11*

Approved by PCC 16th December 2024

---



The parish of Yatton Moor lies 13 miles southwest of Bristol. Please visit our [website](#)

There are three churches: St John the Evangelist, Kenn; St Mary the Virgin, Yatton; and All Saints, Kingston Seymour, serving a population of about 9000 people. 140 people are regular worshippers in these churches.

# Our story

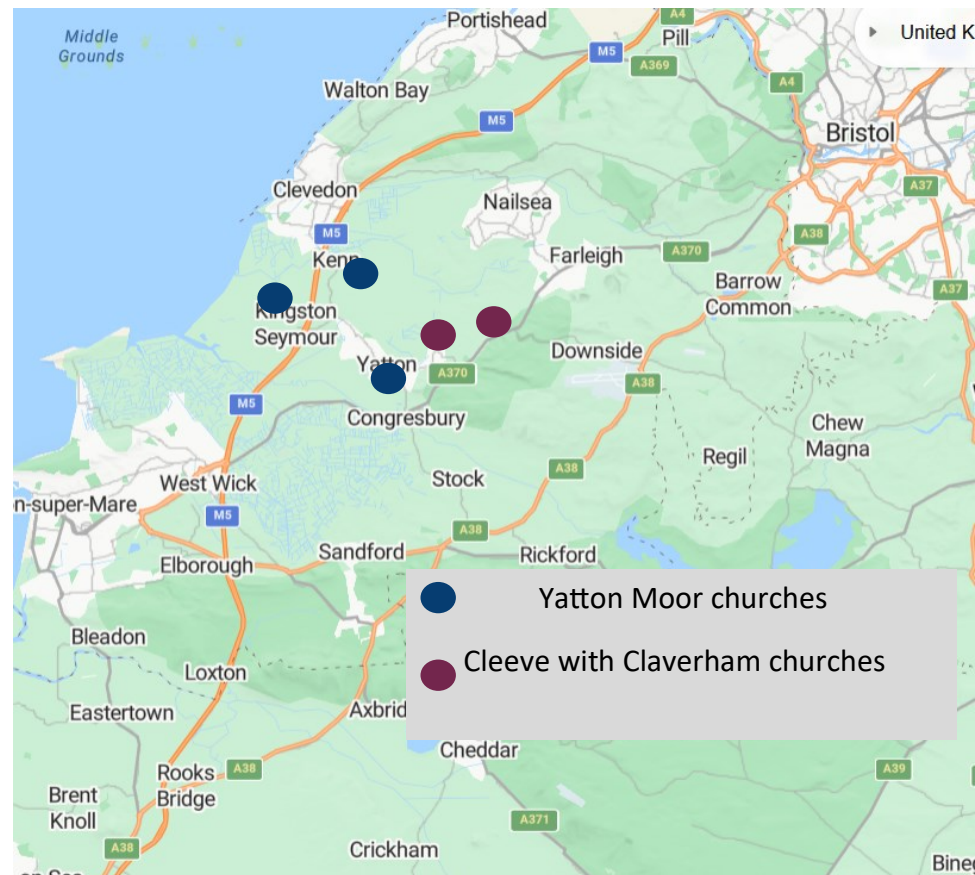
---

Yatton has grown from a village to a small town of 8000 people, linked to Bristol and London by rail, and 20 minutes from Bristol airport. Although confined by low-lying land on either side, almost 1000 new homes were added in the last ten years and more will be built. It is a thriving small town with strong local institutions: two primary schools, three churches (St Mary's, Methodists and Horsecastle chapel). Rugby, football and cricket clubs are active, as are the horticultural society, wildlife action group and history society among others.

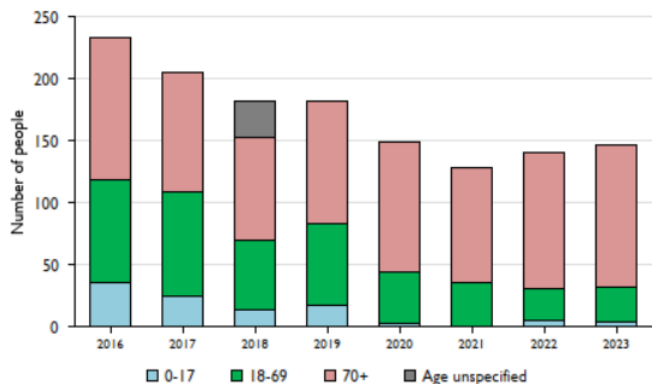
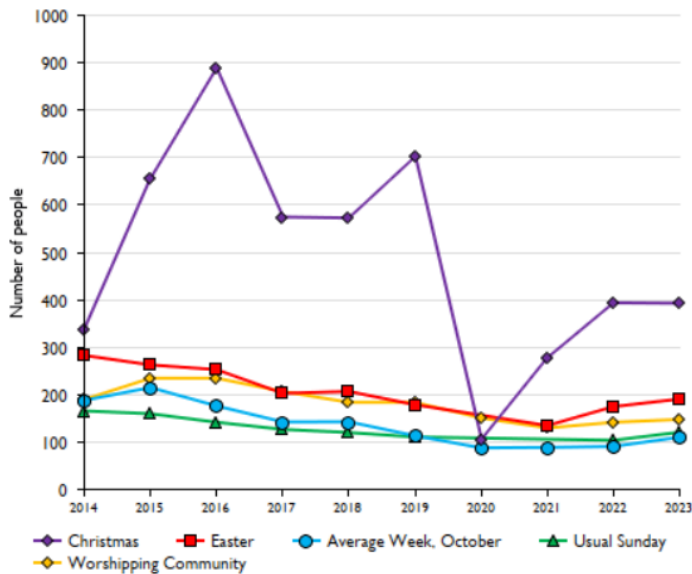
Kenn (population 450) and Kingston Seymour (~400) are agricultural villages, without shops or pubs, but each with a wide range of activities and a vibrant spirit. In both these two communities the church and village hall are the foci of village life. Each church and area has its own character.

Yatton Moor parish is moving from a team ministry to a group ministry, partnered with the two churches in the parish of Cleeve with Claverham. Where we previously had two full time stipendiary clergy, supported by a house-for-duty (HfD) priest, our allocation across five churches is now one full time post plus one HfD. Both posts are currently vacant.

The full time post will become the incumbent at Yatton Moor, and the HfD at Cleeve with Claverham, the two working as equals. The group structure reflects better how we now work together, sharing an administrator, a common rota of services, and shared events and resources, such as a safeguarding team.



# Our challenges



- Engagement.** For every regular worshipper, there are many more who are glad the churches are there and offer occasional support. Kenn and Kingston Seymour churches both have Friends groups. However, together these are still a small percentage of the total population, many of whom seem to regard the Christian faith as irrelevant to their lives. We want to be better at engaging with families - children are largely missing from our congregations. We believe that God calls people, so how can we provide pathways for engagement and making new disciples?
- The next generation.** While our regular worshipping numbers have been stable recently after steady decline, the age profiles of our congregations do not guarantee a Christian presence in 20 - 40 years. We are confident and creative in worship in a range of traditional and informal formats, supported by choirs at Yatton and Kingston Seymour, and believe our worship and fellowship to be attractive and meaningful, so how can we continue to do these well? If we were to offer one new service or activity, what should it be? What unmet need is God calling us towards?
- Finance or mission?** The active members are constantly needing to raise money to look after buildings and pay parish share, reducing the time and energy they can give to mission. How can we meet our financial needs while not compromising other vital aspects of our ministry and at the same time extend our reach into our communities?



# Our hopes

---

## Sustain and nurture

Our pattern of services, groups, music and events offer stability, fellowship and deeper discipleship to our regular worshippers. We trust these also provide opportunities for church growth from those already adjacent to the church .

Many services and activities are led by lay people already. What other gifts will be discovered?

How will we meet and welcome people newly called to faith by God?



## Links with schools

There are two schools in Yatton. One has regular links with St Marys, through services and (together with Methodists) 'Open the Book' assemblies. The other school is new and we have yet to connect with them.

How can we enrich the lives of children in all our schools, and provide pathways to faith for young people?



## Links with our communities

The worshipping community is just 1% of the local population.

How can more people feel more connected to their churches?

'Come to church' is not enough today. What stepping stones to Christian faith and discipleship can be offered?

We want our communities to see our churches as vital and welcoming community hubs, part of meeting local needs.



# What we offer

---



- An active and engaged PCC and loyal congregations. In vacancy we have seen new initiatives: a Warm Welcome after school group; a new Spring Festival in 2023, a well-used children's corner in Kingston and both clergy and lay-led worship and events sustained across the parish. St Mary's and All Saints have active bell ringing bands; there is a keen Mothers Union group at Yatton, and other activities which you can find on the [church web site](#). Our numbers have grown slightly in this period, and we are keen to see more.
- We are already working together with the parish of Cleeve with Claverham in deeper ways than expressed in the previous Team ministry. We believe that we have laid a good foundation for the collaboration which will be essential to the success of our new Group Ministry.
- Support from (and to!) a part-time administrator, three retired clergy with permission to officiate, one Reader, one Lay Worship Assistant, one Lay pastoral assistant, a safeguarding team, organists, and many volunteers.
- A place to develop your ministry, taking us alongside you on your walk with God
- A spacious modern era rectory with a large study, close to St Mary's church in Yatton
- A Pre-School (for which the PCC is responsible) using St Mary's 'Chapter House' in term times.
- Three beautiful listed church buildings reasonably up to date with repairs - but continuing maintenance needs. There are active Friends groups at Kingston and Kenn, and a fabric fund at Yatton of about £50k
- We want our priest to thrive, and expect that rest days and holidays will be taken, and the PCC pays for an annual retreat.
- Bristol city, Bristol airport and the Mendip hills are equally accessible



# Is this you?

## We hope our next priest will be:

- A leader confident in their gifts, willing to work with the strengths of others and with our partners in group ministry.
- A faithful Christian who leads worship, teaches, and inspires and develops faith in others
- Someone who values the contribution of the laity and will take an active part in the development of gifts.
- Someone who will share our vision of active churches now and in the future, and can help us build towards this.
- Someone who can help us imagine and develop a church that engages with its community in sharing the gospel
- A pastor to the parish, who will be known for their care and empathy in life's milestones.



“This group of parishes is a gift for someone. I have led worship across your churches and have been really struck by the energy and willingness of people to keep things alive. In each church there is a strong group of helpers who make sure things are put in place. This is a super platform to support and encourage the ministry of any priest called to serve in these communities “

+ Alastair Redfern, assistant Bishop , Bath and Wells [Paraphrased]

# Facts and figures - people attending

Statistics for Mission Form 2023:	Yatton	Kenn	Kingston Seymour	Claverham	Cleeve
Electoral Roll	105	48	57	17	31
Regular worshippers	81	27	35	34	
Baptisms	5	1	1	0	0
Marriages in church	2	1	3	1	0
Funerals in Church	12	6	4	3	4
Funerals conducted elsewhere	5	1	1	1	3
Burial of ashes	3	0	1	0	1

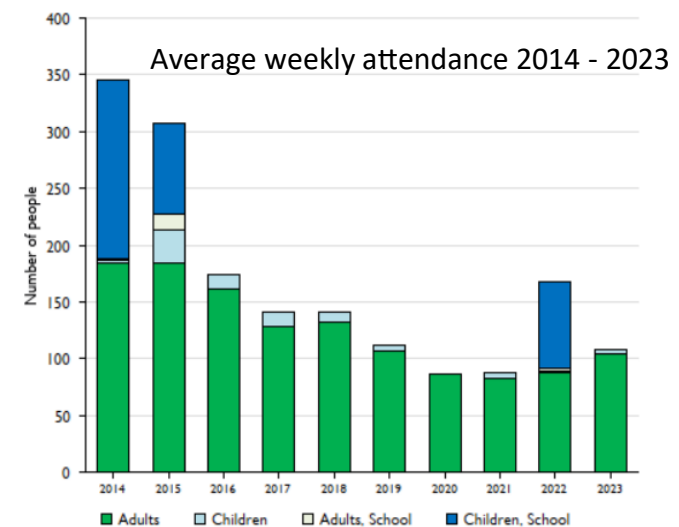


Some of the Kingston Seymour and Kenn congregations attend the other church if there is no Sunday service in their own church. On a typical Sunday, the congregation at principal services is currently around :

55 - Yatton

20 - Kenn

25 - Kingston Seymour



# Service rota Jan 2025

	1 <sup>st</sup> Sunday	2 <sup>nd</sup> Sunday	3 <sup>rd</sup> Sunday	4 <sup>th</sup> Sunday	5 <sup>th</sup> Sunday	1 <sup>st</sup> Sunday	2 <sup>nd</sup> Sunday	3 <sup>rd</sup> Sunday	4 <sup>th</sup> Sunday
<b>St John's Kenn</b>	8:30 BCP Communion	11am Lay led		11am Holy Communion	Group communion, location changes	8:30 BCP Communion	11am Lay led		11am Holy Communion
<b>All Saints Kingston Seymour</b>	11am Lay led	8:30 BCP Communion	11am Holy Communion			11am Lay led	8:30 BCP Communion	11am Holy Communion	
<b>St Mary, Yatton</b>	10am Holy Communion	10am Lay led	10am Holy communion	10am Lay led		10 am Lay led	10 am Holy Communion	10am Lay led	10am Holy Communion
<b>St Barnabas, Claverham</b>		10 am Parish		10 am Parish			10 am Parish communion		10 am Lay led
<b>Holy Trinity Cleeve</b>	10am Parish Communion		10 am Lay led	10am Cleeve Village Hall: Café Church , Lay led		10 am Parish communion		10 am Parish communion	10am Cleeve Village Hall: Café Church , Lay led

- This is the pattern for 4-week and 5-week months planned at the start of 2025, and is designed to be suitable for two priests working across the two parishes. In vacancy we have been fortunate to have three active retired priests with permission to officiate, and the regular support of two others in the area.
- Services labelled 'lay led' may be taken by a priest, but many are now taken by laity. The lay-led services at Kenn and Kingston are called 'All together' with a less formal feel and are intended to be family-friendly. Lay-led services at Yatton are called 'Morning prayer' and use liturgies drawn from Common Worship, normally supported by a choir.
- On first and second Sundays one priest may take communion services at both 8:30am and 10am services 4 miles apart, but at present a different priest takes the 8:30 services. Other Sundays a priest only takes one service - the time after the service is also important, and we do not want a priest to rush from one service to another.



# Facts and figures - finances and fabric

---

## Finances - 2023

General Fund	Other funds	All Funds 2023	All Funds 2022
£116.2	£114k	£230.2k	£227.5

General Fund income 2023: £158.1k

General Fund outgoings 2023: £156k

£6k was given from the General Fund and £3.1k from special collections to good causes

## Church building reports: 'Quinquennials'

**St Marys (2022):** Generally satisfactory, leaks in the south aisle roof have been under investigation and have an active project to fix them. (Below left)

**St Johns (2020):** Vestry/ boiler house major repairs have been completed, and we are monitoring very occasional east wall damp. Choir pews have been removed to create an open area, and a screen and projector installed. (Centre)

**All Saints (2024)** Following partial re-ordering to improve circulation space and the creation of a children's corner, All Saints is currently engaged in renewing the slate roofs to the vestry and chancel and is blessed with local skilled trades-persons who for many years have taken a personal interest in the maintenance of the church. It is also working towards re-pointing of the tower. We hope to convert the old stone stable into a toilet and multi-purpose room

All churches are considering how to meet the low carbon goals of the C of E and how to make the buildings more suitable for the next years.



# Facts and figures - the local area

---

## Schools

[St Mary's church PreSchool](#)

[Infant and C of E Junior, Yatton](#)

[Chestnut Park Primary,](#)

[Backwell Secondary and Sixth Form](#)



## Web sites

Yatton area from Cadbury Hill. The tower of St Mary's church is visible

## [Our churches](#)

[Yatton Parish Council](#)

[Kingston Seymour Parish Council](#)

[Kenn Parish Council](#)

[Office for National Statistics - Yatton](#)

[Office for National Statistics - Kingston Seymour](#)

[Office for National Statistics - Kenn](#)



# Kenn

[www.kennvillage.co.uk](http://www.kennvillage.co.uk)

Kenn Village website has a video of Kenn made in 2024 and recent Kenn village magazines.

Kenn Village Hall

[Kvhallbooking@gmail.com](mailto:Kvhallbooking@gmail.com)

Kenn Village Market

01275 870189

Yellow Teapot - cake and company

01275 873554

Charity Coffee Mornings

01275 877806

Monthly Village Meal

[sarahrossiter26@gmail.com](mailto:sarahrossiter26@gmail.com)

'Heaven Preserve Us' Jams

01275 873554

Kenn Parish Council

[Clerk@Kenn-pc.org.uk](mailto:Clerk@Kenn-pc.org.uk)

Altar Guild (church cleaning and flowers)

01275 340323





# Kingston Seymour

<https://www.kingstonseymour.org.uk/>





# Yatton

I have been taking services on a regular basis for the duration of the vacancy period. It has been a privilege and a joy to be with these dear people whose efforts during the vacancy have been exemplary. There is a choir and Director of Music who are greatly valued within the congregation. It has been great to work with them + Mike Hill, retired Bishop of Bristol



Yatton music society



Lent Lunches 2024



Yatton Horticultural Society



All souls service 2024



St Marys Christmas coffee morning in the village hall 2023



Yatton Rugby Club



Remembrance Sunday 2024



Yatton Schools carnival



# The Rectory

---

The Rectory in Well Lane, Yatton, is a 1960s property which has been modernised and is well situated in the centre of the Benefice..

The Rectory is a generously sized home, with four good sized bedrooms, one with ensuite. There is a large study on the right of the entrance hall which is split into two rooms giving a **seating** area as well as an office area.

Outside there is a double garage with a generous parking area. The private garden at the **rear** is laid mainly to lawn.

The Rectory is situated in the centre of Yatton and only a few minutes' walk from both **St Mary's** Church and the village centre, it is near the school and set back from the High Street.

Local shops are within 5 minutes walk. The Strawberry line path is 10 minutes walk from the rectory.



THE STRAWBERRY LINE CYCLE PATH



Rectory



St Mary's  
Church





## Portishead Deanery

The Benefice of Yatton Moor is in the Deanery of Portishead. We are a friendly deanery. People get on well together and the clergy chapter is a place of mutual support and encouragement which is good at working out ways to help one another.

We are committed to working together and ask all new clergy in the deanery to consider themselves a resource to the wider deanery. Most parish clergy have particular interests and specialisms. We encourage co-operation and working across parish boundaries.

We have an energetic Deanery Mission and Pastoral Group and an experienced Deanery Leadership Team which is engaged in moving forward across the whole deanery.

The 23 parishes (plus a conventional district) of the Deanery of Portishead have set ourselves a challenging deanery plan to:

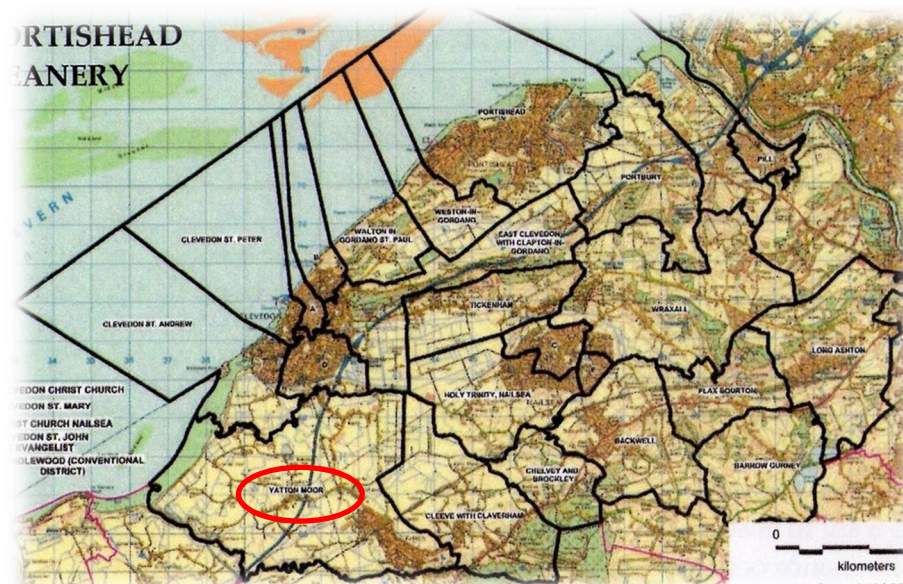
- **inspire** us to respond to God's call where we are
- **equip** people to share in ministry and leadership
- **communicate** – to better share and publicise events or initiatives that are taking place in our own local context

We are praying that these next few years will be a fruitful and rewarding time to be in the Portishead Deanery and we look forward to meeting and working with the newly appointed Incumbent of the Benefice. If you would like to find out more, or would value an informal chat about applying, please do call any of us on the numbers below.

**Rob Eastwood Dewing Co Area Dean** – 07518 606708

**Astrid Tiesema-Samsom Co-Area Dean** – 07791 028060

**Rob Norman Lay Dean** – 07973 753837



## Diocesan statement – our vision for growth and transformation

### Introduction

We are delighted that you are considering whether this post of Priest-in-Charge / Incumbent of the Parish of Yatton Moor in the Diocese of Bath and Wells might be right for you. In order to help your prayerful discernment, we want to share a bit about our diocesan vision, within which we hope your own ministry might flourish.



Appointing a priest incumbent is amongst the most significant decisions that any benefice makes. When appointments work out well, they contribute significantly to parishes flourishing and growing in a host of different ways – in spiritual depth, in impact within local communities and in the numbers of people becoming part of the local church. Such flourishing is not, of course, all down to the person appointed as priest. It depends first and foremost upon God. It also depends upon everyone in a benefice being willing and able to contribute their unique gifts, skills, resources and abilities: working alongside their priest and sharing in the ministry of the benefice.

The flourishing and growth of churches always needs attention. It is especially important for us today, as we seek to recover from the effects of the Covid pandemic which accelerated the pattern of decline in church attendance that we have seen across our diocese. Thankfully there are signs that we are recovering from the impact of the pandemic. Not only does national church data show that our average adult weekly church attendance rose between 2021 and 2022 but, even more encouragingly, we have seen many churches around our diocese develop approaches that respond to the opportunities and challenges in their local context and enable growth to happen.

### A vision for growth and transformation

In light of the challenges and opportunities we face, we feel our aim across all our parishes needs to be growing our churches, within and beyond our church buildings, in both numbers and depth of faith, so that we can better work for the transforming of our communities and the life of God's Kingdom amongst us.

## Our shared priorities

To help us pursue this aim, and following consultation across the diocese in 2023, we are inviting all parishes to focus on four particular areas of our ministry together. It is important for clergy considering working in our diocese to know what these priorities are, even though what they look like in practice will vary in each place.



<b>To value and cherish the people and resources we already have</b>	We aim to ensure each person is well supported and equipped as a follower of Jesus Christ and for any ministries they may feel called to undertake, within the local church and wider community. We are committed to supporting the well-being of all our leaders and church officers, both lay and ordained. We have a fully funded clergy well-being service, the offer of peer support groups, and an excellent team of diocesan support staff fully focused on supporting our parish-
<b>To develop new Christian worshipping communities</b>	Whether it be new forms of worship in a wide variety of settings and times, church revitalisations or church plants, we long to see the good news of Jesus connect with the people in our communities that our traditional offerings
<b>To share in ministry and leadership</b>	We are committed to the New Testament vision of the church as a vibrant body of people all using their God-given gifts. We are committed to a model of shared local ministry: raising up and equipping lay and ordained leaders able to
<b>To deepen and grow faith</b>	This is foundational to all we do. We long to see people of all ages and backgrounds, but perhaps especially children, young people and young adults, having more opportunities to discover, explore and grow in faith.



### **The outcome we are looking for**

When he talks about his own ministry in 1 Corinthians, Paul captures the dynamic we are seeking to achieve. “I planted,” he says, “Apollos watered, but God gave the growth”(1 Cor 3: 6). We know that our churches will only flourish and grow as a result of God’s action among us – it is God who gives the growth.

But Paul is also clear that we have a part to play too – in watering and planting, in doing the things that enable the conditions for God’s growth to be supported. So, covered by prayer, our confident hope is that if we are intentional in seeking God’s guidance in planning and supporting growth, then God will honour that to see his people flourish and thrive - in spiritual depth, in impact within local communities, in the numbers of people becoming part of the local church and in transforming communities locally and beyond.

### **Local shaping and diocesan support**

There can’t be any ‘one size fits’ all approach to turning the priorities outlined above into action. They always need to be adapted to local circumstances, opportunities and needs. The task of our diocesan support services is to get behind all that local benefices are doing and apart from their general support, there is specific support for exploring how to grow new Christian communities, how to discern and equip a growing range of ministries in your context and how to work well with children and young people. All these areas of support are grounded in exploring what it means to live out our faith.

### **What implications does this have for the appointment of clergy?**

It is important for us all to appoint clergy to benefices who are ready, willing and able to pray for and share in the vision we have for the flourishing and growth of churches and Christian life in our diocese. We want to create an environment that could be described as high challenge, high support. This means appointing clergy who will not only value all that already exists but will be eager to work with others to build on and develop it. It means appointing clergy who are committed to learning, being creative, and to starting with the gifts God has given to them, their benefice and the wider community. We are therefore looking to appoint candidates who will

- be committed to praying and intentionally seeking the growth and flourishing of the benefices in their care
- relish and expect to work in an environment that is high challenge, high support
- work joyfully and collaboratively with those who share with them locally in ministry and leadership, with their congregations and with others in their locality, to identify ways to grow and develop their churches with the grain of local priorities, resources, skills and passions
- enjoy working in partnership with deanery and diocesan colleagues.

We hope this might be you! We hope that you’d like to join us on the adventure and course we’ve set for our next ten years. We’re praying that God will send us the right labourers for the harvest that God has set before us. Could this be you?



**Bishop Michael**



**Archdeacon of Bath**