

PROFILE

F O R T H E

APPOINTMENT OF PRIEST IN CHARGE (VICAR DESIGNATE)
OF THE UNITED BENEFICE OF YATTON WITH KENN AND
KINGSTON SEYMOUR, CLEEVE WITH CLAVERHAM.

*“For I know the plans I have for you, declares the
Lord, plans to prosper
and not to harm you, plans to give you hope for the
future” (Jeremiah 29:11)*



Table of Contents

2 Diocesan Welcome

3 Welcome

4 Vision

5 Priorities

6 Our offering to you

7 Finances

8 Schools

9 Who are we looking for

Living & working in the
10 benefice

11 The Rectory

12 St Mary the Virgin Yatton

14 All Saints' Kingston Seymour

16 St John the Evangelist Kenn

18 Holy Trinity Cleeve

20 St Barnabas Claverham

22 Deanery page

“WE WANT TO BECOME MORE CONFIDENT CHRISTIANS, SERVING OUR
COMMUNITIES AND
DRAWING PEOPLE OF ALL GENERATIONS INTO FAITH”

Sharing in Ministry in Bath and Wells

Bishop Michael and the whole team here in Bath and Wells are delighted that you are considering a move to this beautiful part of the country. We want to take a moment to share with you our own vision and priorities, which we hope will help in your prayerful discernment as to whether a move to Somerset is right for you.

We have a strong commitment to seeing our mission statement become a lived reality: **“in response to God’s immense love for us, we seek to be God’s people, living and telling the story of Jesus”**. We are praying for clergy who will join us in seeking to lead growing churches across the Diocese and to see those churches being a **transforming presence** in their communities, all in the power of God’s Spirit.

We have discerned four particular areas of ministry and mission, which we are focused on at the moment:

To value and cherish the people and resources we already have. We want to value all our volunteers, especially our church officers, and ensure they are well supported and equipped for their ministries. We place a high value on our communities that experience significant deprivation (what we call our ‘Magnificat Parishes’) and on our areas of rural sparsity. We want to place a high value on the well-being of all our leaders, both lay and ordained. We have a fully funded clergy well-being service, the offer of peer support groups, and an excellent team of Diocesan support staff fully focused on supporting our parishes, chaplaincies and schools.

To develop new Christian worshipping communities. Whether it be church plants, church revitalisations, or new forms of worship in a wide variety of settings and times, we long to see the good news of Jesus connect with the many for whom our traditional offering struggles to reach.

To share in ministry and leadership. We are committed to the New Testament vision of the church as a vibrant body of people all using their God-given gifts. We are committed to raising up and training lay and ordained leaders able to share together in leading the church.

To deepen and grow faith. This is foundational to all we do. We long to see people of all ages and backgrounds, but perhaps especially our children, young people and young adults, having opportunities to explore, discover and grow in faith.

If those priorities chime with your own sense of call at this time, then we would love to encourage you to look at this role in the United Benefice of Yatton with Kenn and Kingston Seymour, Cleeve with Claverham. If you would like to talk to someone further about the role, please don’t hesitate to contact Archdeacon Adrian:

The Venerable Dr Adrian Youngs
Archdeacon of Bath
56 Grange Road Salford Bristol BS31 3AG
Telephone: Direct line: 01749 685149 PA: 01749 685278
Email adbath@bathwells.anglican.org

WELCOME

TO

The United Benefice

OF YATTON WITH KENN AND KINGSTON
SEYMOUR, CLEEVE WITH CLAVERHAM

Thank You.....

Thank you for your interest in our Benefice. We hope this Profile sufficiently captures the opportunity of providing spiritual leadership for this new Benefice so that you share our excitement.

The appointee will be Priest in Charge (Vicar Designate) of the United Benefice of Yatton with Kenn and Kingston Seymour, Cleeve with Claverham, located in the Portishead Deanery in the Diocese of Bath and Wells.

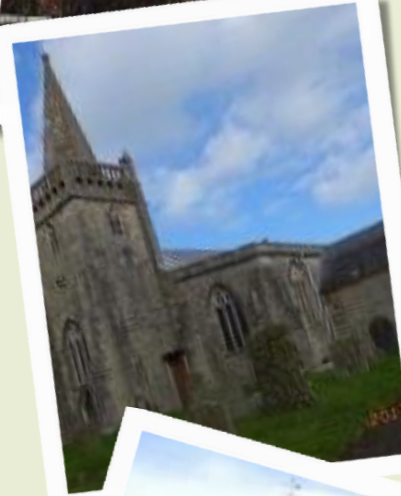
A mixed rural and semi-urban Benefice, with diverse expressions of faith, we are five churches of different sizes, histories and backgrounds, which have been working together in a team ministry. Over the years we have come to know each other's strengths and to value our differences as well as our similarities.

The team is being dissolved to form a new United Benefice and has two PCCs, one for Yatton, Kingston Seymour and Kenn (Yatton Moor PCC), the other for Cleeve and Claverham (Cleeve with Claverham PCC), which we wish to retain.

Newcomers to our team often comment on how welcome they are made in our Churches, there is a true feeling of faith and warmth and this spreads out into our local communities. Many members of all the Churches are actively involved in non-church activities in the community. We are lucky to have two church schools in the team and even during the rector vacancy there has been excellent support for the schools both by the clergy and the church members. Services in all the Churches are friendly and supportive and numbers have held up well over the whole Benefice during the vacancy. Both PCCs are committed and very keen to move forward and support a new Priest in Charge.

Change is always difficult to embrace, and the move from a team to a United Benefice and the loss of one full-time member of clergy after a Diocesan deployment review has been slow and at times challenging. We have also recently been faced with the imminent departure of our current House for Duty Priest. However our Churches are determined to overcome this and are at a point where, through strong leadership and with God's will, the benefits of a closer relationship with each other and the opportunities for spiritual growth in our communities are eagerly anticipated.

Our Churches



Our Vision

Our vision is to grow a living faith; giving us a united purpose to share God's love and the good news of Jesus through serving our different communities and God's world.



Benefice Ministry Team

The Benefice ministry team will consist of the new priest in charge, and a part time House for Duty Priest. One of the first priorities of our new priest in charge will be the appointment of a new House for Duty Priest.

At present there is one licensed Reader, and during the team rector vacancy we have also been supported by several retired clergy. We are also blessed with a Lay Worship Assistant and two Lay Pastoral Assistants.

There is a Steering Group of clergy and wardens, which meets regularly to plan service rotas across the Team, discuss festivals and some other aspects of our worshipping life.

The Benefice ministry team is supported by church wardens at all our Churches, together with a number of deputy and associate wardens.

We greatly benefit from a part time Benefice administrator, based at the Church office in St. Mary's, Yatton, with whom the new priest in charge will need to work closely to ensure that the demands of the new Benefice on her time can be accommodated within her current contracted 25 hours per week. We recognise that there may need to be more administrative support in the future.

**"WE WANT TO BECOME MORE CONFIDENT CHRISTIANS,
SERVING OUR COMMUNITIES AND
DRAWING PEOPLE OF ALL GENERATIONS INTO FAITH"**

Our Priorities

YATTON MOOR PCC

CLEEVE WITH CLAVERHAM PCC



Each of the five Churches undertook a discernment process, and our perceived needs and priorities were also considered with both PCCs, with Bishop Ruth and the Archdeacon Adrian present, from which the following key priorities emerged:

- To develop and grow this new Benefice, mindful of the individual needs of each Church.
- To be a community which welcomes all.
- To improve communication between and within the five churches. We recognise that we have not always got this right in the past and that as a united Benefice, good communication and a support network is essential.
- To build a strong Benefice ministry team, encouraging not just the licensed ministry but also sharing the gifts of laity.
- To further develop the Mission of our Churches, for families, to the young, through schools, youth groups, Warm Welcome rooms, and music initiatives.
- To further develop outreach to the people in the new housing developments, which have significantly increased our populations over the past few years.
- To grow in our faith and be able to speak and share it in a more effective way, making our Churches more valued and relevant in the community.
- To spread the word of God in a way which modern generations understand and can relate to, the necessary changes being introduced sensitively and mindful of our existing worshipping community.
- To develop the musical traditions of our Churches.
- To work towards greater sustainability in our churches and churchyards.

Our Offering to You

The opportunity to make a real difference.

Huge potential exists to grow our faith both within our Churches and in our wider communities. We have missed leadership during our prolonged periods of vacancy so our door awaits you, wide open.

A strong safeguarding team.

Safeguarding is taken most seriously, and we have an active safeguarding team consisting of four safeguarding officers across the five Churches. We provide safer recruitment advice to the clergy and PCCs and are responsible for processing DBS applications within the Churches. We encourage on-line training courses and also run some courses in-house. The team meets regularly and there are close links with the Diocesan safeguarding team.

Good condition of Church buildings

Information regarding the condition of the fabric of each Church is given in the relevant sections.

A wonderful place to live and work

A warm supportive environment.

In-post support.

We have had the legacy of experienced and insightful clergy on which we hope to build. We also enjoy the support of retired clergy, our Reader, our LPAs and LWA, ongoing links with our Methodist cousins, and thriving connections with local schools. The Benefice Pastoral Support Team have already begun to meet regularly to coordinate and support each other in the Benefice's pastoral work.

Finances

We have an experienced financial management team and strong finances, and to date both PCCs have always paid their Parish Share in full and on time.

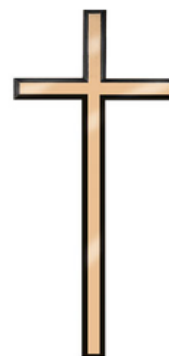
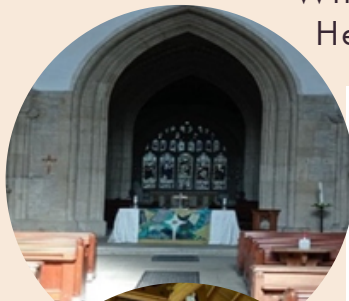
Willing volunteers

Each Church organises its own sides-people, lesson readers, intercession writers, chalice assistants, music, choristers, bell ringers, coffee makers, flower arrangers and cleaners

Your welfare

A commitment to your welfare with expenses paid and an annual retreat.

With the CROSS at our Heart we cannot fail





Finances

YATTON MOOR PCC FINANCES

Yatton Moor has a secure financial position with the general fund showing a small surplus for the last three years; this is reinforced by a good cash position which can enable the three churches to flourish. The Reserves policy is to maintain reserves on the General Fund equivalent to three months expenditure. Currently the reserves are at 6 months and it has been agreed that the additional reserves can be released for fabric or mission work among the three churches with PCC approval. Nevertheless, the current economic climate has made it challenging to increase the regular giving of our congregation to a level which ensures that income meets expenditure.

There is a Finance Committee which reviews and makes recommendations to the PCC regarding the financial position.

There are a number of restricted funds for each of the three churches for the upkeep of their fabric and churchyards.

The financial statements can be found on the charities commission website - <https://register-of-charities.charitycommission.gov.uk/charity-search/-/charity-details/5003761>

CLEEVE WITH CLAVERHAM PCC FINANCES

Active, transparent and regular communication with our worshippers, regarding our PCC's finances, plus active stewardship, has meant that collectively over the last ten years the Parish Share commitment, together with other 'day-to-day' costs have all been met from income, with this general fund having reserves equivalent to around 9 months outgoings. The outreach philosophy of the Parish of Cleeve with Claverham, even with their own financial challenges, aims to help those in need. Over the last five years the PCC has gifted £8,000 to charities and, through its fund-raising efforts and donations, an additional £17,500 has been sent to charities and good causes. Of this, the Clevedon Foodbank received over £7,250 in the last three difficult post-covid years. In the last few years over £3,000 has been given by the PCC to Court de Wyck School to support and nurture school activities with our two churches and support them during Covid.

TOGETHER

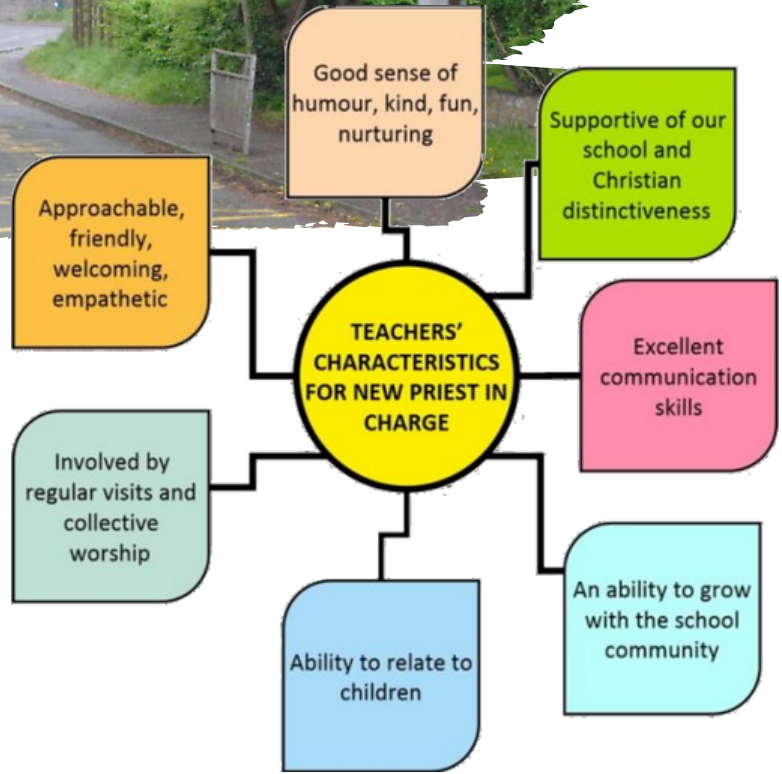
All five Churches are fortunate that they can hire out their churches and the Church rooms for a little extra income.

Benefice support for Schools

With thanks to Court de Wyck staff and children for their views on a new priest in charge.

Court de Wyck Church School, a Diocesan Multi Academy Trust School in Claverham has close links with Holy Trinity and St Barnabas. The present team vicar visits Court de Wyck regularly.

Yatton Church of England Junior School has close links with St Mary's. In the past assemblies at Yatton Junior have been taken by the previous Rector's wife, a licensed Priest. The Foundation Governors for both schools are on the relevant PCCs and report back at PCC meetings and a committed member of Holy Trinity is a Diocesan Multi Academy Trust Governor at Court de Wyck. Members of the congregation go in to help with activities at both Schools. Easter in a Box and Christmas in a Box is funded and delivered by both PCCs, in a joint venture with the Methodist Church.

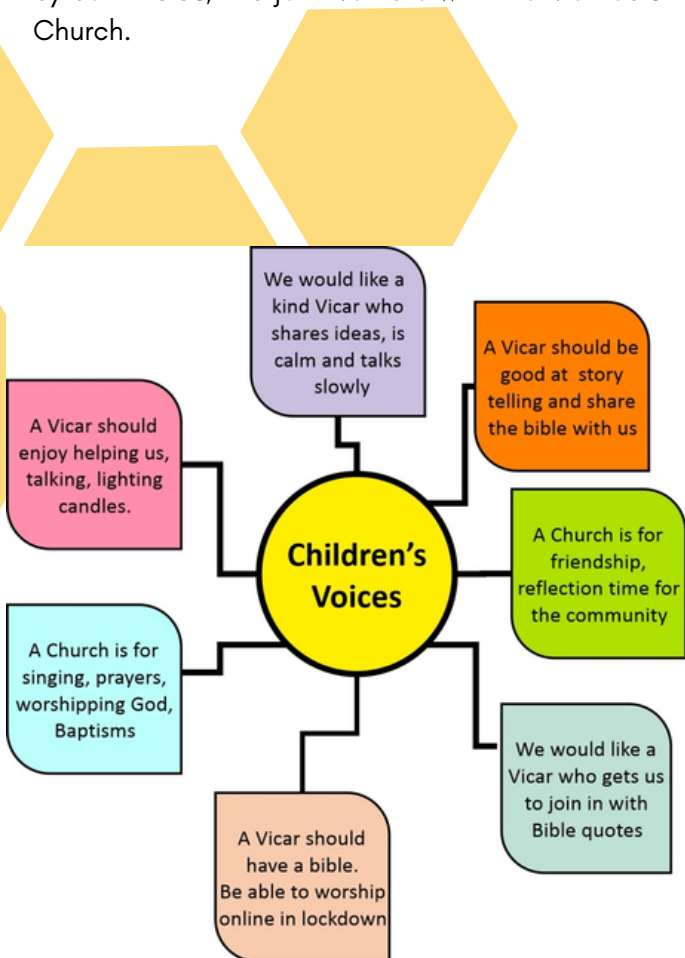


At Christmas the Cleeve with Claverham PCC pays for a coach for Court de Wyck School to attend a service in Holy Trinity Church where members of the Church provide a lively Carol Service for the whole School. Each child is given a Holy Land wooden decoration for their own tree funded by the PCC. Year 6 leavers are presented with a Bible from the Churches of Cleeve and Claverham and have an organised trip to Wells Cathedral.

A variety of Services - Christmas, Easter, Harvest are held at St Mary's for Yatton Junior school and a Leavers' service for year 6. Members of St Mary's congregation join with the Methodists in visiting the Junior School on a regular basis. Year 6 Children have an 'Evacuation day' in the Church as part of their learning about WWII which members of St Mary's congregation take part in. The Yatton infant school is a Quaker foundation, both Infant and Junior Schools are part of The Lighthouse Trust MAT.

A further School, Chestnut Park Primary has recently opened at the North End of Yatton, and establishing contact with this School would further our outreach.

St Mary's Pre School is held in the Chapter House attached to St Mary's Church each weekday 9.00am to 12 noon, during the school terms, up to 20 attend each session. This is an Ofsted Registered Body. Finances and administration are PCC Responsibilities as is the payroll for staff and their line management.



Who are we looking for?

We seek a full-time priest in charge who has

- A passion and energy for a diverse rural and semi-urban ministry
- A desire to be active and visible in our communities

AND who is:

- A real "doer", grounded in the Word of God and led by the Spirit.
- A leader who is also outward looking and who will facilitate our desire to connect with our growing communities.
- A good communicator, with experience and proven skills of managing sensitive situations, who will engage with our congregations and listen to them.
- A team player and enabler, able and open to work in partnership with a willing lay team.
- Comfortable both with the more modern and also with the traditional approaches to ministry.

Do come and see us – you
are assured of a warm
welcome.

God Bless You

Flowers made by our Warm Welcome team to welcome you to our ministry



Young bell ringers to chime you in!



And the ladies who lunch....those who make it and those who clear up, ready and waiting for your arrival



Living and working in the Benefice.

The Benefice lies virtually mid-way between Bristol to the north and Weston Super Mare to the south with the A370 to its east and M5 to its West.

The railway station in Yatton has direct services to London and South Wales and, with a change at Bristol, to the midlands and north of England. With the nearby Bristol airport and M5/M4 motorways, transport links are excellent both regionally, nationally and internationally.

The Benefice is a good mix of small and large villages with excellent access to large town amenities.

With the coast nearby at Clevedon and the extensive Mendip Hills AONB with its beautiful countryside and walks on our doorstep, we are truly blessed: who could ask for more?

The area is also well served educationally with a Pre-School at St Marys Yatton, a Pre-School 'Stepping Stones' in Claverham and primary education offered at two schools in Yatton and at one in Claverham. Both Yatton Junior and Court de Wyck Primary are Church of England schools. There are excellent state secondary schools at Backwell, Churchill and Clevedon, all within a few miles.



VIEWS OF OUR BEAUTIFUL SOMERSET COUNTRYSIDE



AND FINALLY

The Rectory



Your home will be The Rectory in Well Lane, Yatton. It is a 1960s property which over the past years has been modernised and is well situated in the centre of the Benefice.

The Rectory is a generously sized home, with four good sized bedrooms, one with ensuite.

There is a large study on the right of the entrance hall which is split into two rooms giving a seating area as well as an office area.

Outside there is a double garage with a generous parking area. The private garden at the rear is laid mainly to lawn.

The Rectory is situated in the centre of Yatton and only a few minutes' walk from both St Mary's Church and the village centre, it is near the school and set back from the High Street.

Some of the big questions posed by the children of Yatton Junior School

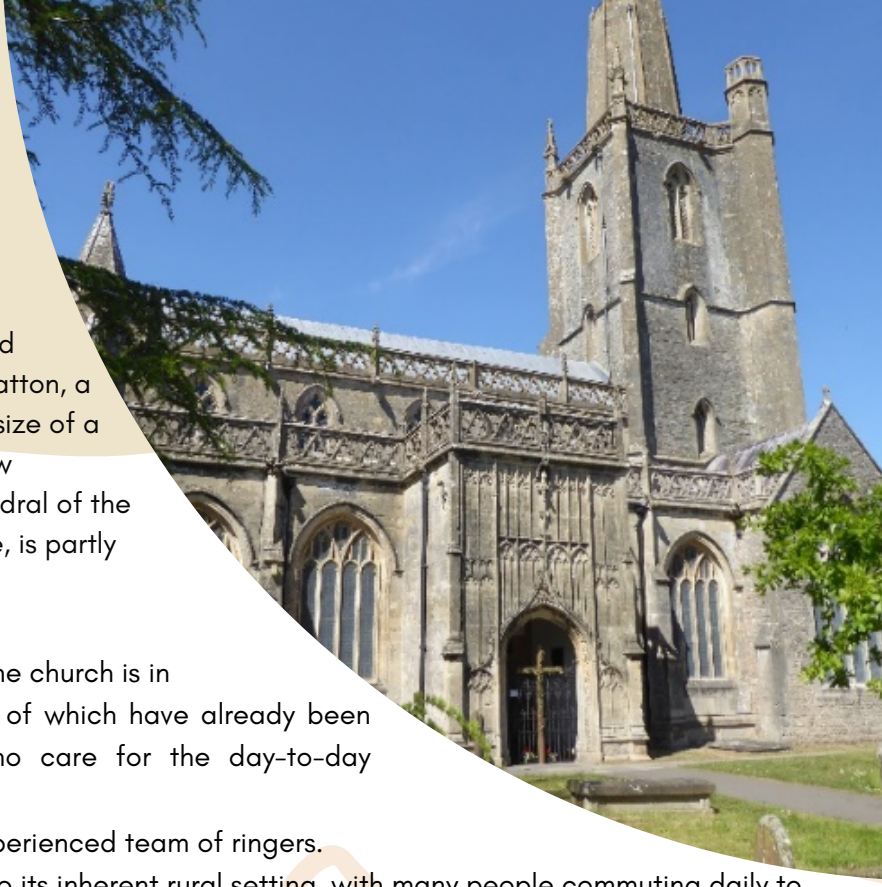




St. Mary the Virgin

Yatton:

"Village" and Church



St. Mary the Virgin "St Mary's" sits at the heart of and dominates the skyline of the original old village of Yatton, a village that in the last few years has grown into the size of a small town of approximately 10,000 souls, due to new developments at its North End. Known as the "Cathedral of the Moors", St. Mary's, with its distinctive truncated spire, is partly 13th century but mostly medieval with 15th century enlargements.

The last quinquennial was in 2022 and states that the church is in "good condition with some repairs needed", many of which have already been addressed. We have an active fabric group who care for the day-to-day maintenance and facilitate larger works.

St Mary's has an excellent peal of 8 bells and an experienced team of ringers.

Yatton still enjoys a good social mix of people due to its inherent rural setting, with many people commuting daily to Bristol and beyond. Like many areas a recently established Food Bank shows that it is also a community not devoid of those financially deprived and in need.

Pattern of services pre-covid

Sunday

- 8.00am Said Eucharist (1st & 3rd)
- 10.00am Sung Eucharist/family service (1st & 3rd Eucharist 2nd & 4th Morning Prayer)
- 6.00pm Evening Prayer (2 per month)

Wednesday

- 10.00am Said Eucharist

During Vacancy

Sunday

- 10.00am Sung Eucharist 1st & 3rd
- Morning Prayer 2nd & 4th
- 5th Sunday rotates around the Churches

What does our witness to faith look like?

The average age of the congregation is relatively senior, however, our regular Sunday service has a congregation of 60. We value the opportunities to reach out to younger and wider members of our village community through schools, "warm welcome" and especially music.

St Mary's is open from Wednesday to Sunday each week for private prayer, and the building is used daily for our Pre School which has been inspected and graded "good" by OFSTED.

The local Church of England VC Junior school, has termly services in the church and the PCC are represented on the board of Governors.

We are told that we offer newcomers a warm welcome into our church community second to none....and sometimes cake!



Our traditional festival services are full of music attracting large congregations



What is God doing among us already?

We have strong connections with our local Church of England Junior School:

Sharing with our Methodist friends members of our congregation regularly take "open the book" sessions, the annual Christingle Service and festival Messy Church events. On Christmas Eve the traditional Crib service fills the church to capacity. Lots of our congregation are involved in the annual visit to the school for our Christmas Fayre, where Santa, Mrs Claus and the Elves are regular attenders.

A weekly after school "Warm Welcome" provides just that, to currently 10 parents and 15 children. They enjoy activities and refreshments in the Chapter House and are given access to the Church in which they are encouraged to explore and become familiar



Music plays a large and important role in both our worship and outreach to the wider community.

St Mary's has a part-time musical leader and organist; she is a very experienced music teacher, incorporating a wide range of music. Under her guidance there is a well-supported, robed choir regularly numbering 10 to 15 or more.

She also rehearses the recently formed youth music group "Tutti-Flutties" who meet before the weekly choir practice.

The church hosts a number of concerts each year and we enjoy a good relationship with the music lovers in our community, especially our own PCC, Yatton & Winscombe Chorale and The Yatton Music Society.



Pastoral care is important to our congregation

Our retired clergy and lay team visit the Care homes and housebound to provide Home Communion, as well as to those experiencing episodes of illness or immobility. Flowers are distributed to the housebound or recently bereaved at Christmas and Easter as well as posies on Mothering Sunday.

The Mothers' Union is active in Yatton and cherishes the bond with Kabwe in Zambia.

With our giving we financially support both local and international charities. We have a well-supported Christian Aid week, collect items for the local food bank, pack shoe box donations at Christmas and support the local Youth Club. We would like to do more, however, fund raising is increasingly difficult.

St Marys initiated and jointly with the other Churches in Yatton compiled and delivered Welcome Packs to the residents of the local new developments, this is a particular area of outreach that needs exploring.



Our Priorities

St Mary's unlike the other Churches in the Benefice has been without leadership for nearly two years, and we recognise the huge benefit a priest will make not just to our Church worshipping community but also to the Yatton community at large. We would like to restore our regular worship to the breadth and range enjoyed prior to the vacancy, aware that this will mean movement between our various Churches. We wish to promote and increase working with our sister Churches in the Benefice, whilst keeping our local identity. We, like many rural churches, need to increase the diversity of our congregation. We are aware that this will mean change, however handled with sensitivity and experience, St Marys will embrace this with open arms as Christ would wish. We have experienced some conflict in the parish principally caused by mis-communication. We would love a priest who can help us address our short comings in this area.

All Saints' Kingston Seymour – At the Heart of the Community

Hello from Kingston Seymour, where we are fortunate in that our Grade I listed church stands in the centre of the village, in a pretty and peaceful churchyard surrounded by drainage ditches (rhynes). The village has a population of only 400, and with no shop, school or pub, the church, with the Village Hall (directly opposite), is the beating heart of the community. Although we strongly believe that the church is the PEOPLE, not the building, we are nevertheless very proud of our little church. There has been a church here since Norman times – only the font remains – but the present building is a strangely coherent mixture of architectural styles dating from the late 14th to mid 19th centuries.

It is open every day and is well-used for a wide variety of purposes. Now that we have removed some of the pews – just a few, at the back – we have a more flexible space for coffee and chat after services or for holding small meetings. We also have a colourful and well-equipped Children's Corner, so our smallest members are well catered-for, both on Sundays and indeed at any other time.

For most of the last decade we have benefitted from the ministry of part-time clergy living in the village, most recently a truly inspirational House for Duty Priest.

We will miss her terribly, but will endeavour to continue what she has started and maintain her vision and enthusiasm. We are also blessed in having a retired priest living in the village, who still takes some weddings and funerals and helps out in emergencies. In addition, we have an accredited Lay Worship Assistant who is available to lead worship and give reflections.



Existing pattern of services

1st Sunday 11am All Together in Church (ATIC) – a Service of the Word that has an overall structure but draws on material from sources such as Rootas, Iona and other liturgies

2nd Sunday 8.30am Holy Communion (BCP)

3rd Sunday 11am Holy Communion (Common Worship)

4th Sunday No Service

5th Sunday 10am Team Service (rotates around the churches).

Style of worship – The pattern of worship allows for flexibility and choice; we are fortunate that at present we can cater to varying tastes. The small number of members who attend the 8.30 traditional Communion value it highly. In other services we are becoming more adventurous! We aim for approachable language and a recognition that sermons and talks need to be down-to-earth and relateable to everyday life. We have further to go...

The numbers – 35 regular worshippers but Sunday congregations vary between 8-12 (2nd Sunday) and 30-40 (ATIC). More for Festivals. Packed for the Christmas Eve Crib service, complete with newborn lamb! Lots of movement between All Saints' and St John's.



We have one churchwarden and four deputies; we have found ways to share the workload amongst most of the regular congregation and have a rota system which is working well.

The church is in fairly good order although we are about to have some repairs done to the chancel roof and porch. The Friends of All Saints', established in the 1990s, is independent of the church but exists solely to raise funds for its fabric. Over the 30 years of its existence it has raised more than £150,000 through donations and regular fund-raising events.

Kingston is a very diverse community, with an age profile which covers the whole spectrum from newborns to nineties. We have lots of young families; most of the children attend school in Yatton (primary) and Backwell (secondary). Although it is still very much a farming community we also have upwards of 70 small businesses. Some former farms have diversified into storage, catering, fishing lakes (we have three!) and small industrial units. But our remaining farms have hosted many social and fund-raising events, ranging from sheep-racing to wassailing, and also outdoor "services" and Messy Church events. During Covid we built a "theatre" out of hay bales in a barn and had 150 people to a nativity play.



And this summer the annual North Somerset Agricultural Society Ploughing Match and Produce Show was held in the village, providing an opportunity for the church to engage with lots of visitors. The Village Hall hosts a monthly Village Market, Toddlers, three skittles teams and many activities ranging from yoga to dog training. Tuesday mornings are particularly busy, with the weekly Community Post Office, Toddlers and coffee for all. The Hall also hosts many church events, including Quiz Nights, Harvest Breakfasts or Suppers, wedding receptions and wakes.

Challenges and Opportunities



- We see signs of growth and answers to prayer in that several new Christians have recently joined the congregation and are participating in regular Bible studies, which is very encouraging. We believe that God is calling us to be even more deeply embedded in the community.

- Most of our regular congregation are over 60 and many in their 70s or 80s. We find it difficult to attract younger people, although we do now have several families attending our monthly ATIC services on a regular basis.

- However, it has proved impossible to keep the children once they reach the ages of about 8 or 9 due to the number of secular activities which take place on a Sunday.

- We do not "pay our way". Our regular congregation, many of whom are on fixed or diminishing incomes, does not contribute enough through regular giving to cover costs. But we do our best to meet the shortfall through fund-raising activities.
- We would like to make the church a more user-friendly and versatile space. Our kitchen area is very basic and we need to provide toilet facilities (only available at the Hall across the road). However, our aspirations in these directions keep being frustrated by the need to raise funds for tedious but necessary things like roof repairs. We have found it difficult (and very onerous) to attract grant funding.

St John the Evangelist, Kenn.



Dave and Abby Porch wed at St John's in July 2023, pictured - Dave's parents, best man, and daughter; the whole family live in Kenn.

The church is cared for day to day by the Alter Guild, and members of the congregation, but many village people help, in sometimes unreported ways, putting the bins out, operating the floodlighting, keeping the churchyard tidy, acting as watchful eyes over the building. They are butresses supporting us from outside the congregation but within the larger church family



Crib Service showing the chancel area with screen.

St John's is a small church, open for reflection and respite every day. We know that non-service goers often call in for a quiet moment. Our core congregation is largely retired from full time employment but busy. They are faithful and prayerful, welcoming to visitors and open to new ideas and forms of worship, also generous, enabling St John's to pay its proportion of the Team Parish Share. Witness is shown by tolerance of other peoples' opinions and feelings. Numbers have kept constant over the last few years (27 regular Worshippers 2023) with some folk coming to Kenn when they need easy access to a small church. There is an increasing flow of attendance between us and the congregation of All Saints Kingston Seymour.

The age of St John the Evangelist church is unknown but its tower, with unusual pyramid shaped top, could possibly be Norman. The church was largely rebuilt in 1861. In 2004 a separate meeting room and toilet were built using stone from a derelict building on the site. There is disabled access to these facilities. There is a small car park and a well-maintained churchyard. The toilet is open to all every day, used by delivery drivers, refuse collectors, the 'postie' and anyone working in the village.



Plans are advancing to make the church more welcoming with a glazed door, and more family friendly with the construction of an area for buggy parking, toys and coffee making facilities, as well as improved facilities for the disabled. These developments were facilitated by the arrival of our House for Duty Priest, in 2020. Her enthusiasm, and experience in such things as Faculty Application enabled us to move forward in projects that we had been attempting for years.

The church and meeting room both have Wi-Fi. There is a screen in church enabling services to flow without paper Orders of Service, and when necessary, services to be transmitted by Zoom. (Remembrance Service 2022 was led by our priest from home as she had Covid). Recently it has also shown photo montages during funerals. It also enables clear illustration of Lent and Advent courses etc. The chancel has recently been reordered, providing a pleasant space for worship and presentation.

Kenn is a largely commuter village, with a population of circa 350. There is a proportion of retired couples and singles and working age families with children of all ages. These children attend several different schools and colleges. There are no regular groups that meet for children in the village, no toddlers group, or youth group etc. This makes contact with families very difficult. However, when youngsters do meet up at village events, they quickly engage with each other.

We know that some of these families attend other churches in the area. Whilst, of course, we welcome children when they do arrive in Church, and make huge efforts to involve them in Christingle, Christmas, Mothering Sunday, and Easter Services. we currently have no regular/formal contact/worship with the children of the village.



Deputy Churchwarden Jenny with Angels and Shepherds at Kenn's Crib Service 2022

Our HfD's ministry also offered us the opportunity of joining in online courses and talks that we would have hitherto been unaware of, as well as the Bible Studies that she herself ran. Currently, we offer 3 services each month, giving a variety of style - Traditional Communion, Common Worship Communion and All Together in Church (ATIC) a Service of the Word, using elements from various resources including Roots, Iona, and other liturgical resources. Twice weekly we share Benefice-wide Morning Services on Zoom. Also, Bible Study Groups in our Church Room are available in person or on Zoom.

In and around the village there are still families engaged in farming and horticulture. Several farms have converted older buildings into business premises and the local Business Park houses larger enterprises. Since Covid, more people in Kenn are working from home. Although close to Clevedon and the M5, the agricultural presence continues to play a significant part in shaping the character of the village, which still reflects the rhythms of the seasons and the farming year.



At our 2023 Harvest Lunch, in the Village Hall, our oldest and youngest members of St John's congregation.

Kenn has a well-used Village Hall, the most inclusive village event there being the monthly Market, which serves as a useful 'information hub' and an opportunity for villagers to chat with neighbours over a cup of coffee. Kenn W.I. have recently celebrated their 70th Anniversary and meet regularly in the Village Hall. There is a lively monthly village magazine, which includes an update from our house for duty priest and a timetable of services in the parish. The village has a website and a Facebook page.

Post Covid, two, formerly church activities, a Monthly Lunch and a 'Tea and Chat' contact group, have moved into the Village Hall.

Sadly our HfD is retiring in February, which makes the appointment of a priest in charge for the new benefice even more important for us.

Where is St John's heading? We believe God wants what is good for us.

We aim, through prayer and understanding of our faith to do all we can to create a loving, peaceful, and welcoming place of worship in Kenn as part of the larger church. Unity and flexibility between our five churches is of paramount importance if we are to become a truly United Benefice.

Our greatest challenge is to increase our engagement with the wider community.

Welcome to HOLY TRINITY in the village of Cleeve

Holy Trinity, Cleeve strives to be a Worshipping Community that cares for all, looks outwards and continues to engage with our Village, our Benefice, Deanery and Diocese.

Cleeve village is home to around 1,000. It straddles the A370 equidistant between Bristol and Weston. Originally mainly a farming community, Cleeve expanded in the 1930s with many residents commuting to Bristol. Transport links are good with a regular bus service running along the A370 between Weston and Bristol. The Parish of Cleeve with Claverham has two Churches, Holy Trinity, Cleeve and St Barnabas, Claverham, and one PCC. Holy Trinity, built in 1840, is now half a mile from the present day village. The Church is listed Grade 2* and has a recently refurbished Church room attached along with a kitchen area, accessible toilets and a car park. It has an open graveyard managed by the PCC, together with a closed one maintained by North Somerset Council.



EXAMPLE OF CHURCH SERVICES

SUNDAYS

3rd 10am - Holy Trinity - *Creationtide* Eucharist
10th 10am - Holy Trinity - *Harvest Thanksgiving*
10th 10am - St Barnabas - Parish Communion
17th 10am - Holy Trinity - Shared Parish Communion
24th 10am - Cleeve Village Hall - *Café Church: Christmas in a Box* - Bristol Schools Connection.

24th 10am - St Barnabas - *Harvest Thanksgiving* + Communion

24th 7pm - Holy Trinity - *Taizé Service*

THURSDAYS

7th 9.30am - Holy Trinity - Healing Prayer + Communion
14th 9.30am - Holy Trinity - Healing Prayer
21st 9.30am - Holy Trinity - Healing Prayer + Communion
28th 9.30am - Holy Trinity - Bread of Fellowship



FAITH HOPE LOVE

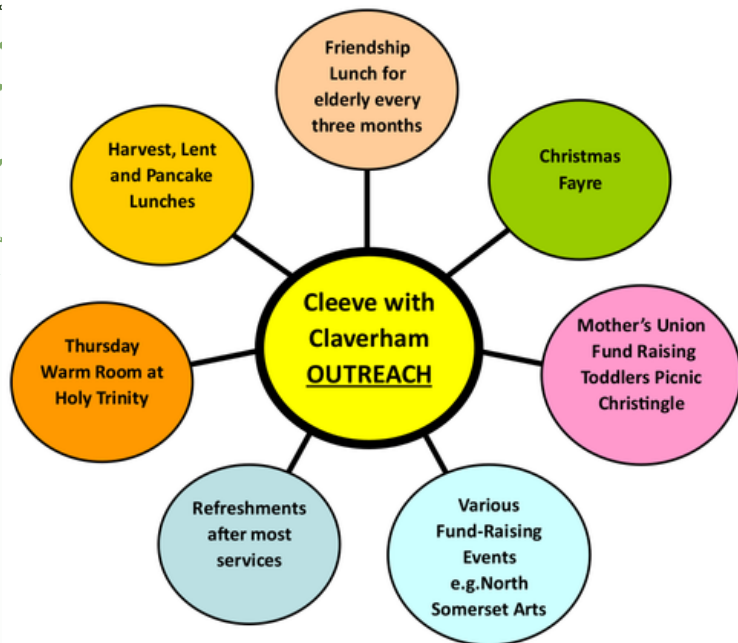
Church services are shared with St Barnabas, this enables those of the more traditional faith to attend Holy Communion on the Sundays that Cleeve has more alternative services. Regular worshippers for Holy Trinity and St Barnabas are 34 as of 2023. We benefit hugely from a small group of volunteers called the 'Tuesday Mowers', who meet each week to do repairs/maintenance for Holy Trinity. The external fabric of Holy Trinity is sound. At our last Quinquennial in 2021, nothing major was identified and the 'Tuesday Mowers' have been able to sort most of the recommendations themselves. Finding Church Wardens is difficult and we have been creating ways to spread the load. Holy Trinity has gained its bronze Eco status and is working towards the Silver.

How can members of Holy Trinity explore their individual faith? Looking to the future there is a feeling that guidance and encouragement on restarting in person Bible studies / prayer groups in the parish would be appreciated additional to those that are provided in the Benefice and online.

Pastoral care in the Church community is excellent with Church members supporting both other people in the Church and in Cleeve village. Holy Trinity also has an experienced Lay Pastoral Assistant and we believe more laity could be encouraged to train for pastoral work and Worship. For some it has been difficult to accept the loss of the post of Vicar in the village and much healing needs to happen.

What would Holy Trinity like to see? More communication across the new Benefice, with all being encouraged to work as a team. To make better use of the whole Benefice social media. Also to see extra administrative support across the benefice. We are positive about increasing our links with the other three churches having integrated with St Barnabas.

Holy Trinity and St Barnabas reach out to the village communities with our monthly magazine 'The Messenger' which is circulated to 130 families and can be found online at www.yattonchurches.org. The monthly Cleeve Magazine, 'All About Cleeve' www.cleeveparishcouncil.co.uk has details of events and services and is delivered to all the households in Cleeve. A Church Welcome pack is hand delivered to all new residents.



Holy Trinity identified that its main strengths are its care of the elderly and its friendly approachable congregation who are very welcoming to newcomers though we wonder if we need to express our faith more within the local population, working towards being more inclusive.

We are fortunate to have a newly refurbished Church room which can be live linked to the Church. This, alongside being used for many church events, is rented out for small group activities and is invaluable in North Somerset Arts week when artists use the Church facilities and the church volunteers serve refreshments. Holy Trinity is intertwined with the Cleeve community with parishioners involved in many of the village activities. The large village hall which is used for various village and church events is a real asset to Cleeve.

What would Holy Trinity like to see as a priority? Regular visits and meaningful interactions with Court de Wyck Church School together with a focus of linking up with our teenagers.

Holy Trinity Church's Congregation has an absence of young people and children. Holy Trinity is open to different forms of worship/ approaches to try and reach out to these age groups for example with 'Café Church'. Cleeve has a huge recreation ground where youth teams play football and cricket and therefore more of a representation



from the Church in this area may be the way forward. We have a thriving Company of Guides who help at the Christmas Fayre and the pantomimes and attend the annual Remembrance service.



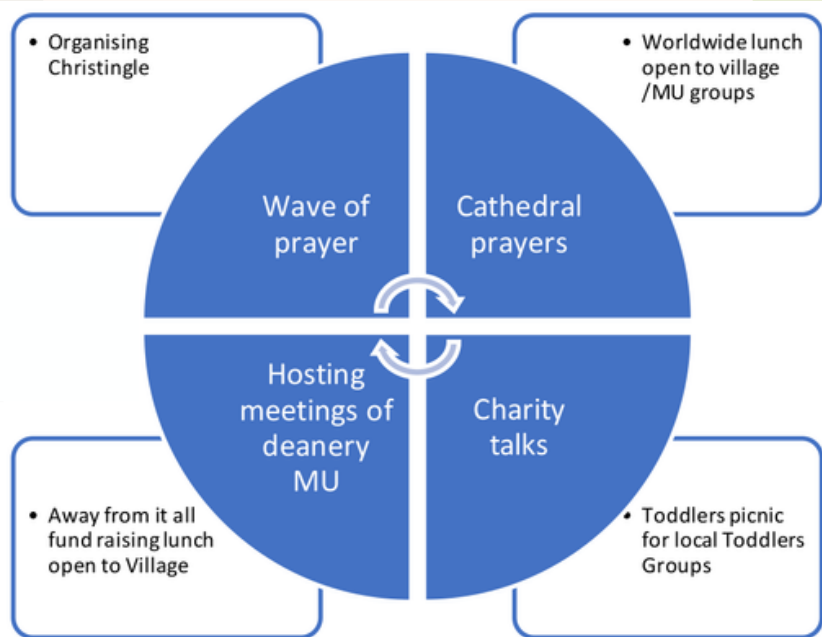
Nativity service in local barn.



St Barnabas Claverham

The unique church of St Barnabas (Grade 2 listed) is on the further outskirts of the village. St Barnabas, originally St Swithin's, was built in 1879 as a chapel of ease or mission church for St Marys, Yatton. St Swithin was the dedication of a lost medieval chapel near to Claverham Court Farm. One reason why it was built was that there were three cider houses in Claverham and the population was not easily persuaded to walk to church in Yatton particularly in the winter. After a number of parish reorganisations it became a chapel of ease to Holy Trinity, Cleeve in the late 1970s. Only minor works from the quinquennial report 2021 remain to be done.

At present the congregation meets fortnightly for communion services shared with Holy Trinity. Many of the congregation can't or won't attend other churches on the alternate Sundays which may be a factor of aging as the vast majority are well over 70 including some of 90. However joint activities with Holy Trinity mostly at Cleeve formed since the joint PCC was set up some years ago are much appreciated.



Mothers' Union

Cleeve and Claverham MU is thriving with 18 committed members and a very active programme raising over £1,450 in the last year for good causes. Activities are organised to help the young and the older members of both Claverham and Cleeve and to connect with other local MU groups.

St Barnabas is used for regular meetings of the Franciscans. Artists and Sculpturers also use the church during North Somerset Arts week. Prior to Covid there were well attended monthly coffee mornings.

Strengths St Barnabas is strong on pastoral care and mission ably led by a retired priest and his wife, who, much to the joy of the congregation, have undertaken voluntary duties similar to a house for duty priest and including seasonal Bible studies open to all the team. The Church has a small but loyal maintenance team. Residents of Claverham and Cleeve are generous in giving lifts to church and to various church and other activities in Cleeve such as the Warm Room and Friends of Cleeve over sixties, (Focos) events etc. It needs more admin support for marketing of buildings and grounds and maintenance of buildings as the church buildings are suitable for regular letting in the week to secure an income. Access is flat and there is a car park and ample on street parking. Also, there is an accessible WC and an area suitable for serving tea and light refreshments.



Although we have lost members through death or age, we have attracted new members who have integrated and become active members of the church family. Easter, Remembrance Sunday and Christmas bring villagers into the church.

Claverham has a small RC church and a Quaker Meeting House in occasional use as well as a newly arrived but thriving Pentecostal church which hosts monthly coffee mornings. All three of these have indicated low levels of participation from local residents.

Quotes from congregation *"Friendly supportive congregation "as a newcomer to the area I was made to feel most welcome and introduced to other groups in the village"*

"Nearer to God in small simple services in peaceful chapel"

"Good acoustics make best of music available to bring joy to worship and consolation at funerals "

St Barnabas is valued by the local community particularly for celebration of life events such as weddings and funerals for local residents as it is highly accessible with adjoining adjacent parking on the road and in car park



Opportunities. *We would like to:*

Maintain a closer relationship with the school in partnership with Holy Trinity to find out about their needs and try to fulfil them.

Continue delivery of introductory leaflet introducing local churches to new residents particularly as there are many young children in the village.

Encourage members to approach craft groups they belong to, to see if sessions in the highly accessible church would be possible. Also Identification of other groups? Small charities meetings- school parents coffee morning etc. Arrangements for marketing, booking, cleaning, opening and shutting up, a competitive fee would need to be agreed including possibly payment for person to oversee the arrangements.

Investigate, with all five churches, the possibility of a paid part-time person, probably working from home, to do organisational work which cannot be covered by already contracted workers and volunteers in liaison with the priest in charge.

Claverham Village

Claverham is recognised as a village within the civil parish of Yatton to which it is joined by Claverham Road. Claverham's population is in the order of 800 people but 400 or so for church purposes because the 200 houses in Claverham Road in effect look to Yatton as the primary source of services. There is a mixture of housing but unusually at least eight working farms. Overall, the village does not appear as affluent as surrounding villages and there are thinly disguised indicators of rural poverty.

Claverham has a busy social life centred on the Village Hall which hosts a bar, well-used skittle alley and conservatory, and a safe large outside seating area. It hosts numerous wakes and social activities such as concerts, Claverham Ladies Guild, various exercise classes besides a toddlers' group and a monthly market. There is also a small care home /nursing home for those with dementia called Mendip Lodge whose residents receive Communion by extension at a mutually agreeable time from a retired Reader.

PORTISHEAD DEANERY

The proposed United Benefice of Yatton with Kenn & Kingston Seymour, Cleeve with Claverham is in the Deanery of Portishead. We are a friendly deanery. People get on well together and the clergy chapter is a place of mutual support.

We are committed to working together and ask all new clergy in the deanery to consider themselves a resource to the wider deanery. Most parish clergy have particular interests and specialisms. We encourage co-operation and working across parish boundaries.

We have undertaken a difficult process of agreeing a new deployment plan which loses two Stipendiary Clergy over the next 5 years and we have a plan for how to go forward and are now able to support those parishes affected and shift our focus to other matters. With a newly-elected Deanery Mission and Pastoral Group and a newly-adopted Deanery Plan (both in September 2023) we are now engaged in moving forward across the whole Deanery.

The 23 parishes (plus a conventional district) of the Deanery of Portishead have set ourselves a challenging deanery plan to:

- **inspire** us to respond to God's call where we are
- **equip** people to share in ministry and leadership
- **communicate** better by sharing and publicising events or initiatives that are taking place in our own local context

We look forward to meeting and working with the newly appointed Priest in Charge of the United Benefice.

Astrid Tiesema-Samsom Co-Area Dean
Rob Eastwood Dewing Co Area Dean
Rob Norman Lay Dean



For Further Information

There are many websites that would give you an insight into what joining our Benefice might be like:

Yatton Moor Team:

www.yattonchurches.org

Diocese of Bath and Wells:

www.bathandwells.org.uk

St Mary's Pre-School

www.stmaryschurchpreschool.org.uk

Yatton Schools

yattonschoools.co.uk

Court de Wyck Church School, Claverham

www.courtdewyck.co.uk

Kingston Seymour Village Website

www.kingstonseymour.org.uk

Cleeve Parish Council

www.cleeveparishcouncil.co.uk

Kenn Parish Council

www.kennparishcouncil.co.uk

Kingston Seymour Parish Council

www.kingstonseymour.org.uk/parish-council

Yatton Parish Council

www.yatton-pc.gov.uk

North Somerset Council

www.n-somerset.gov.uk



The United Benefice

of Yatton with Kenn and Kingston Seymour,
Cleeve with Claverham